

PROJECT OVERVIEW

NYC TRANSIT AUTHORITY - WHITEHALL STATION



ELEVATION: NYC TRANSIT AUTHORITY WHITEHALL STATION/ COOPER CARRY NYC

Repaired and Reinforced - The New Whitehall Station

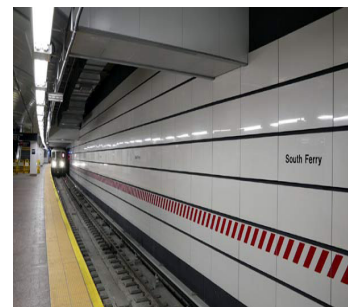
Cooper Carry of NYC designed the first new subway in NYC, Whitehall Station, with a Ceramic5 porcelain cladding solution. Ceramic rainscreen systems are becoming increasingly more popular in the architectural design community.

ECO Cladding's Vci.40 subframing system was utilized in this project. The Vci.40 System is our leading approach for concealed fixing of ceramic panels. Panel fixing incorporates concealed, undercut anchors for the ceramic panels. The back of each panel is pre-drilled using undercut drill bit to receive the hanger clip and expanding bolt anchor.

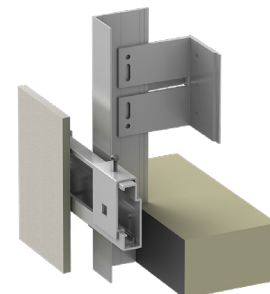
- **SYSTEM:** ALPHA VCI.40
- **MATERIAL:** CERAMIC PANELS
- **ARCHITECT:** COOPER CARRY

855.237.3370

info@ecocladding.com
www.ecocladding.com



DETAIL: CERAMICS PORCELAIN PANELS



SYSTEM DETAIL: ALPHA VCI.40 SYSTEM