

PROJECT OVERVIEW

LUCKETTS FIRE & RESCUE STATION #10



DETAIL: LUCKETTS FIRE & RESCUE STATION - #10 / MOSELEY ARCHITECTS

An architectural vernacular design for a fire station serving a farming community

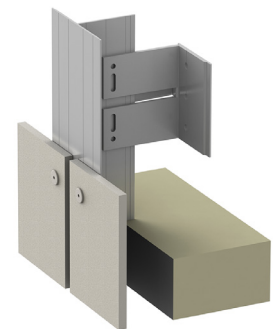
An ECO Cladding Vci.10 subframing system was utilized in this single-story fire station that staffs an engine, ambulance, tanker, and brush unit as well as the county's swift water rescue team, which consists of rescue boats and a support vehicle. The design blended the station with the local architectural native to the surrounding farming community and as a result achieved a balance of form and function to serve the community for years to come. The facility earned LEED Silver certification.



PANEL DETAIL: SWISSPEARL FIBER CEMENT

- **SYSTEM:** ALPHA VCI.10
- **MATERIAL:** SWISSPEARL FIBER CEMENT
- **ARCHITECT:** MOSELEY ARCHITECTS

855.237.3370
info@ecocladding.com
www.ecocladding.com



SYSTEM DETAIL: ALPHA VCI.10 SYSTEM