

PROJECT OVERVIEW

# LOWELL JUSTICE CENTER



ELEVATION: LOWELL JUSTICE CENTER / FINEGOLD ALEXANDER ARCHITECTS | PHOTO CREDITS: ANTON GRASSL

## Achieving LEED® Platinum

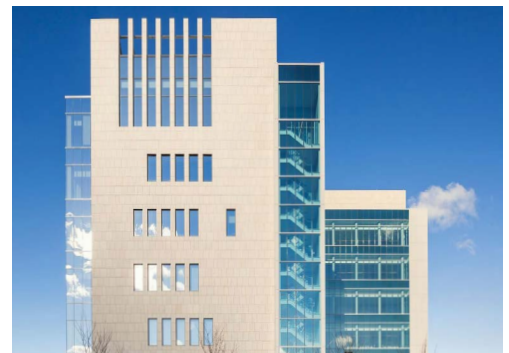
Designed by Finegold Alexander Architects, the project was the largest of three pilot studies for the Commonwealth of Massachusetts' Division of Capital Asset Management and Maintenance (DCAMM)s ZNE initiatives. The courthouse is designed to use 40% less energy than code requires. The natural stone rainscreen exterior envelope helped to contribute to this goal. Featured in Green Building & Design Magazine, Lowell now has the honor of being the first new construction, state courthouse in the country to achieve LEED® Platinum-certification.

ECO Cladding's Vci.25 subframing system was utilized for the stone rainscreen facade, as an engineered c.i. focused subframing system was essential for this energy-efficient design. Installed by the team at Total Wall Systems, the ability for the Vci.25's concealed anchoring system to meet the dead load requirements of the natural stone panels was also a key factor in the installation.

- **SYSTEM:** ALPHA VCI.25 - Concealed Anchor
- **MATERIAL:** NATURAL STONE PANEL
- **ARCHITECT:** FINEGOLD ALEXANDER ARCHITECTS

**855.237.3370**

info@ecocladding.com  
www.ecocladding.com



ELEVATION: NATURAL STONE RAINSCREEN PANELS



DETAIL: STACKED AND RUNNING BOND PATTERNS