

PROJECT OVERVIEW

KING OF PRUSSIA MALL



ELEVATION: KING OF PRUSSIA MALL / CALLISON RTKL ARCHITECTS

Award-winning ACM Facade Application

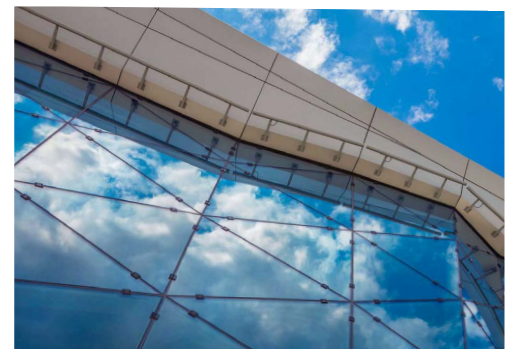
In August of 2016, the King of Prussia Mall became the largest enclosed shopping center in the United States. Designed by CallisonRTKL, this magnificent project has now been declared the "Gold Winner for Renovations" – for retail projects over 500,000 SF in total retail space in the *2019 North America Design and Development Award*, presented by the International Council of Shopping Centers (ICSC).

The ACM metal panel facade incorporated an ECO Cladding Vci.10 subframing system. The complicated design was easily achieved using the flexible Alpha wall bracket at varying bracket depths. ECO Cladding systems for ACM panels continue to gain increasing market share with North America's top ACM fabricators to create a high-performance solution for the long-term.

- **SYSTEM:** ALPHA VCI.10 Visible Anchor
- **MATERIAL:** ACM Metal Panel
- **ARCHITECT:** CallisonRTKL

855.237.3370

info@ecocladding.com
www.ecocladding.com



DETAIL: COMPLEX ACM PANEL LAYOUT WITH GLAZING



ECO SYSTEM: ALPHA VCI.10 VISIBLE ANCHOR SYSTEM

LEARN MORE AT ECOCLADDING.COM