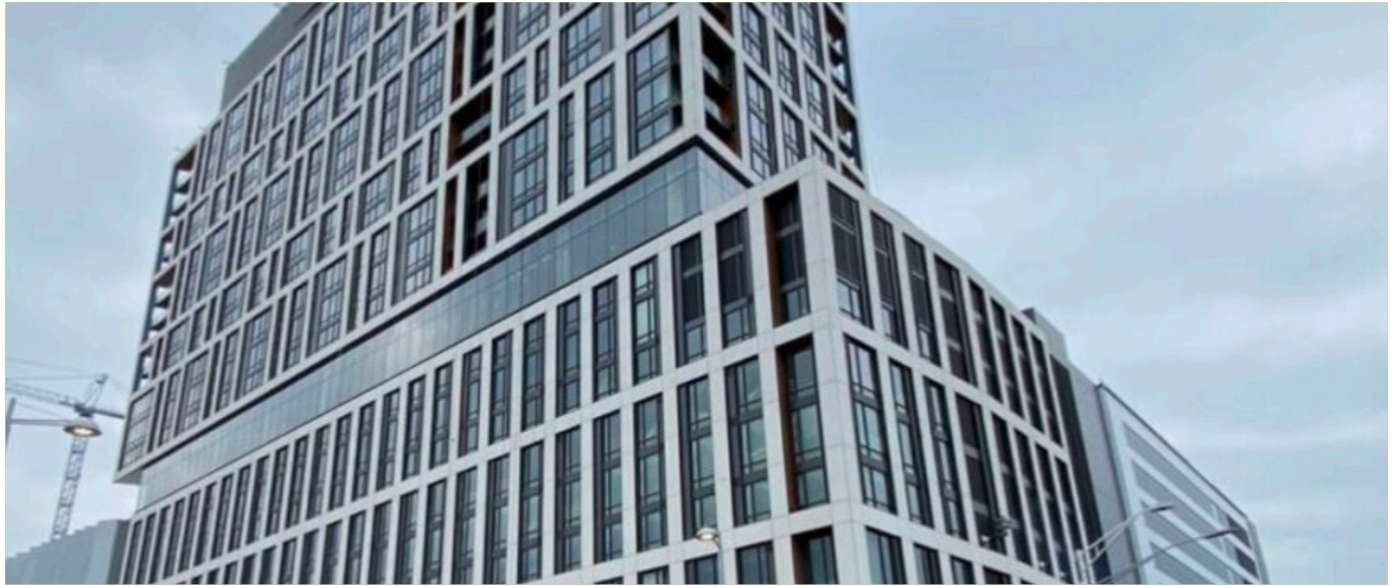


PROJECT OVERVIEW

CAPITAL ONE BLOCK C



ELEVATION: CAPITAL ONE CENTER BLOCK C - FAIRFAX, VA / HGA ARCHITECTS & ENGINEERS - DC

Blending Contemporary Design with Tradition

ECO Cladding is pleased to provide our Alpha E engineered wall brackets for the upcoming Capital One Block C in Tysons Corner, Fairfax, VA. Our engineered Alpha E Wall Brackets form the key building block for the exterior fiber concrete (UHPC) rainscreen for the Block C podium and tower of this large-scale development. This “edge to edge” bracket is specifically designed to be fixed to concrete floor slabs. This unique, engineered support system is capable of spanning story heights without the need for intermediate fixings. The system is individually constructed and fabricated for each project, making it ideal for over-cladding medium and highrise buildings. For the Tower portion of the project, the Eci.10 and Eci. 11 subframing systems were utilized to install the fiber concrete (UHPC) panels. In addition, ECO Cladding’s traditional Vci.10 subframing was utilized for the building’s base podium.

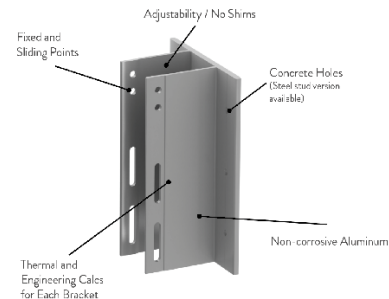
- **COMPONENT:** ALPHA E WALL BRACKETS, ECI.10 & ECI.11, VCI.10
- **MATERIAL:** UHPC (FIBER CONCRETE)
- **ARCHITECT:** HGA ARCHITECTS & ENGINEERS

855.237.3370

info@ecocladding.com
www.ecocladding.com



DETAIL: VERTICALLY-ORIENTED UHPC (FIBER CONCRETE) PANELS



DETAIL: ALPHA E WALL BRACKET FOR EDGE-TO-EDGE CONDITIONS

LEARN MORE AT ECOCLADDING.COM