

PROJECT OVERVIEW

Ingleside at King Farm



ELEVATION: INGLESIDE AT KING FARM - ROCKVILLE, MD / PERKINS EASTMAN

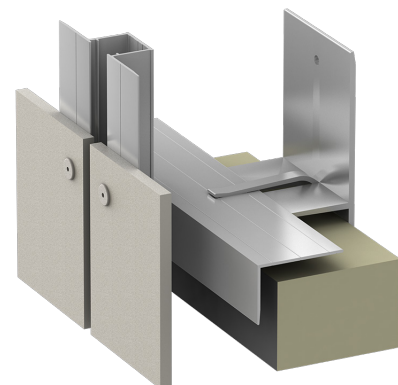
Engineered Systems for Unique Shingle Feature

Perkins Eastman designed a 153-unit expansion at Ingleside at King Farm, a retirement community near Washington, D.C. Two different Swisspearl fiber cement products were incorporated into the multi-building campus. Large format shingles in three colors were used to off-set the brick facade for the memory care facility. The unique fish scale pattern has won attention from the DC design community. ECO Cladding's VZ.10 and Hci.10 subframing systems were utilized and the versatility of having high-performance, engineered subframing components was a key factor for the design team on this project.

- **SYSTEM:** VZ.10 & Hci.10 SYSTEMS
- **MATERIAL:** FIBER CEMENT
- **ARCHITECT:** PERKINS EASTMAN



DETAIL: LARGE FORMAT FIBER CEMENT SHINGLES



ECO SYSTEM: Hci.10 SUBFRAMING SYSTEM

855.237.3370

info@ecocladding.com
www.ecocladding.com