

PROJECT OVERVIEW

230 CLASSON AVENUE



ELEVATION: 230 CLASSON AVENUE - BROOKLYN, NY / DXA STUDIO

Construction Breaks Ground for a 17-story Brooklyn development

Designed by DXA Studio, the forthcoming 230 Classon multifamily building will feature 138 one- and two-bedroom, mixed-income residential units. This 17-story development under construction in the Clinton Hill section of Brooklyn will be situated on a parcel of land controlled by St. Mary's Episcopal Church, rising above and bordering the historic mid-19th century church structure. The existing three-story rectory will be demolished. Expected to be completed in Spring 2023, this project showcases the versatility of ECO Cladding components going under 30,000 sq ft of multiple panel types, including very en vogue corrugated metal panels. A Vci.10 subframing system will be utilized.

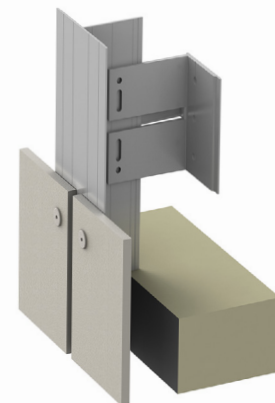


DETAIL: EXTERIOR METAL PANEL FACADE

- **SYSTEM:** ALPHA VCI.10 SUBFRAMING
- **MATERIAL:** METAL PANELS
- **ARCHITECT:** DXA STUDIO

855.237.3370

info@ecocladding.com
www.ecocladding.com



ENTRANCE DETAIL: ALPHA VCI.10 SYSTEM

LEARN MORE AT ECOCLADDING.COM