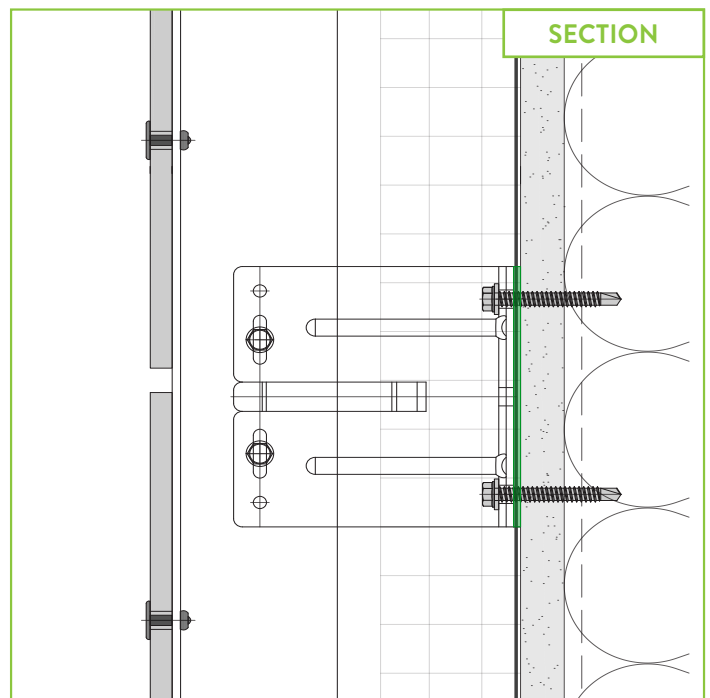
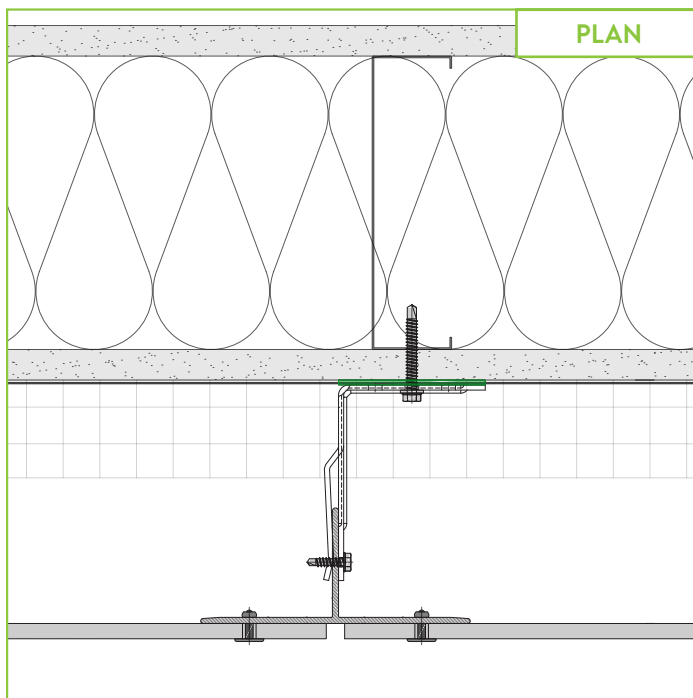
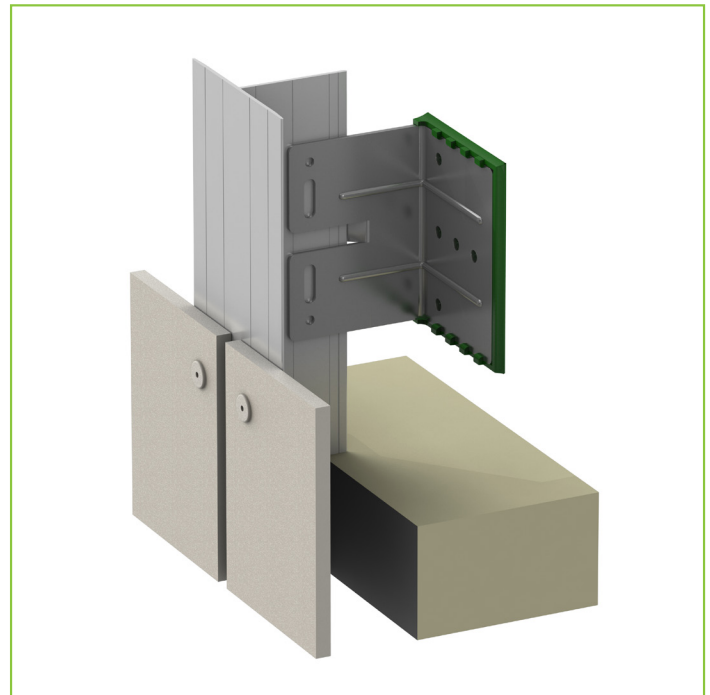


Vci.10

PANELS: FIBER CEMENT / FIBER CONCRETE-UHPC / HPL / TIMBER

Building designers and owners want a complete, cost-effective wall where all components work together to maximize the wall's performance. ECO Cladding provides a high-performance, thermally-broken system that addresses all of the requirements of the wall design and ensures maximum performance for the cladding panel.

- ✓ UNIVERSAL BRACKET
- ✓ THERMALLY BROKEN
- ✓ GRADE 304 STAINLESS STEEL
- ✓ SELF ADJUSTING
- ✓ INSULATION FRIENDLY
- ✓ LIMITED WALL PENETRATIONS



855.237.3370

info@ecocladding.com
www.ecocladding.com

NOTE: TYPICAL DETAILS IN CADS, PDFS AND SPECS ARE AVAILABLE ONLINE AT WWW.ECOCLADDING.COM