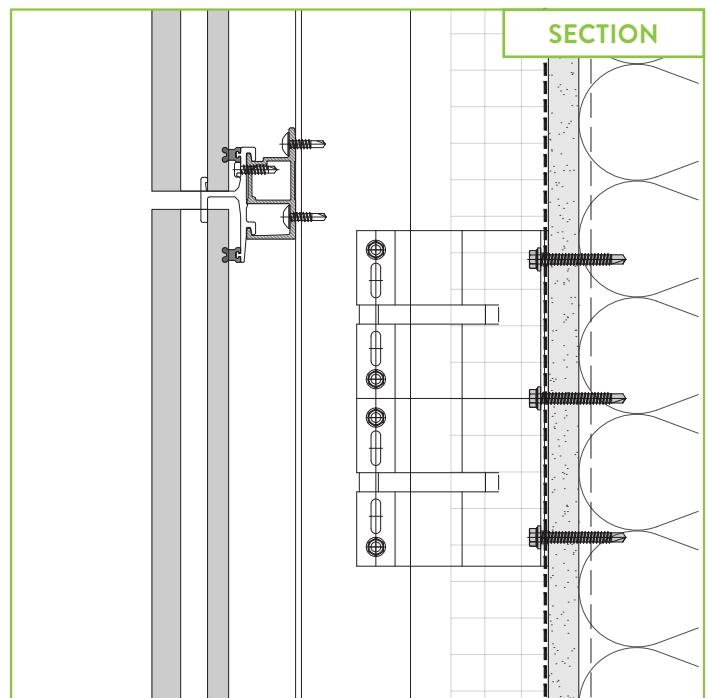
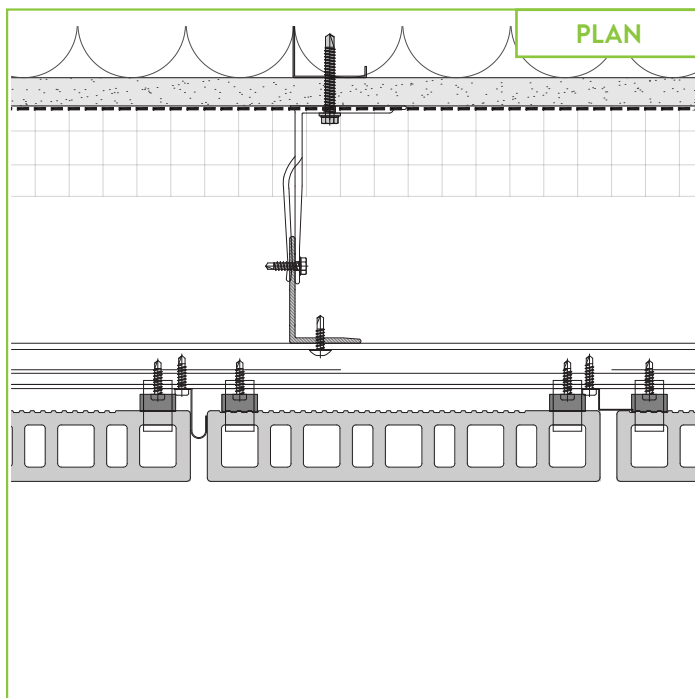
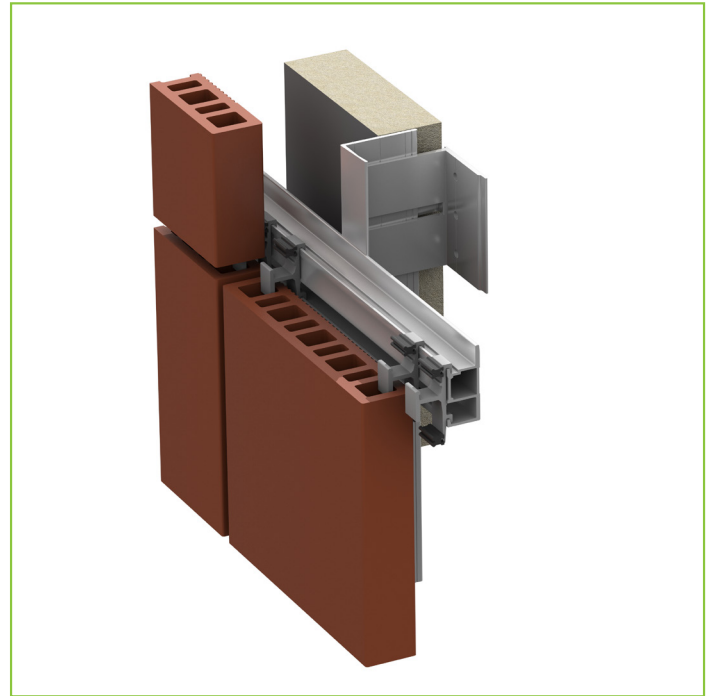


## Vci.29

### PANELS: TERRACOTTA

Building designers and owners want a complete, cost-effective wall where all components work together to maximize the wall's performance. ECO Cladding provides a full "system" approach to address all of the requirements of the wall design and ensure maximum performance for the façade panel.

- ✓ **ENGINEERED DESIGN**
- ✓ **THERMALLY EFFICIENT**
- ✓ **BRACKET ADVANTAGES**
- ✓ **EXCELLENT MATERIAL PROPERTIES**
- ✓ **MINIMIZED BREACH OF AIR BARRIER**
- ✓ **DESIGN AND CONSTRUCTION SUPPORT**



**855.237.3370**

info@ecocladding.com  
www.ecocladding.com

**NOTE:** TYPICAL DETAILS IN CADS, PDFS AND SPECS ARE AVAILABLE ONLINE AT [WWW.ECOCLADDING.COM](http://WWW.ECOCLADDING.COM)