

System depth

Bracket	min. D system depth	max. D system depth	R	t panel thickness
Alpha V 035 / Alpha V+ 035	2 ⁷ / ₈ " (73mm)	4" (101mm)	1 ¹ / ₃₂ " (26mm)	¹¹ / ₁₆ " (18mm)
Alpha V 050 / Alpha V+ 050	3 ¹ / ₈ " (79mm)	4 ⁹ / ₁₆ " (116mm)	1 ¹ / ₃₂ " (26mm)	¹¹ / ₁₆ " (18mm)
Alpha V 080 / Alpha V+ 080	4 ⁵ / ₁₆ " (109mm)	5 ³ / ₄ " (146mm)	1 ¹ / ₃₂ " (26mm)	¹¹ / ₁₆ " (18mm)
Alpha V 100 / Alpha V+ 100	5 ¹ / ₁₆ " (129mm)	6 ⁹ / ₁₆ " (166mm)	1 ¹ / ₃₂ " (26mm)	¹¹ / ₁₆ " (18mm)
Alpha V 115 / Alpha V+ 115	5 ¹¹ / ₁₆ " (144mm)	7 ¹ / ₈ " (181mm)	1 ¹ / ₃₂ " (26mm)	¹¹ / ₁₆ " (18mm)
Alpha V 135 / Alpha V+ 135	6 ⁷ / ₁₆ " (164mm)	7 ¹⁵ / ₁₆ " (201mm)	1 ¹ / ₃₂ " (26mm)	¹¹ / ₁₆ " (18mm)
Alpha V 150 / Alpha V+ 150	7 ¹ / ₁₆ " (179mm)	8 ¹ / ₂ " (216mm)	1 ¹ / ₃₂ " (26mm)	¹¹ / ₁₆ " (18mm)
Alpha V 170 / Alpha V+ 170	7 ¹³ / ₁₆ " (199mm)	9 ⁵ / ₁₆ " (236mm)	1 ¹ / ₃₂ " (26mm)	¹¹ / ₁₆ " (18mm)
Alpha V 185 / Alpha V+ 185	8 ⁷ / ₁₆ " (214mm)	9 ⁷ / ₈ " (251mm)	1 ¹ / ₃₂ " (26mm)	¹¹ / ₁₆ " (18mm)
Alpha V 200 / Alpha V+ 200	9" (229mm)	10 ¹ / ₂ " (266mm)	1 ¹ / ₃₂ " (26mm)	¹¹ / ₁₆ " (18mm)
Alpha V 220 / Alpha V+ 220	9 ¹³ / ₁₆ " (249mm)	11 ¹ / ₄ " (286mm)	1 ¹ / ₃₂ " (26mm)	¹¹ / ₁₆ " (18mm)
Alpha V 255 / Alpha V+ 255	11 ³ / ₁₆ " (284mm)	1'-0 ⁵ / ₈ " (321mm)	1 ¹ / ₃₂ " (26mm)	¹¹ / ₁₆ " (18mm)

Legend

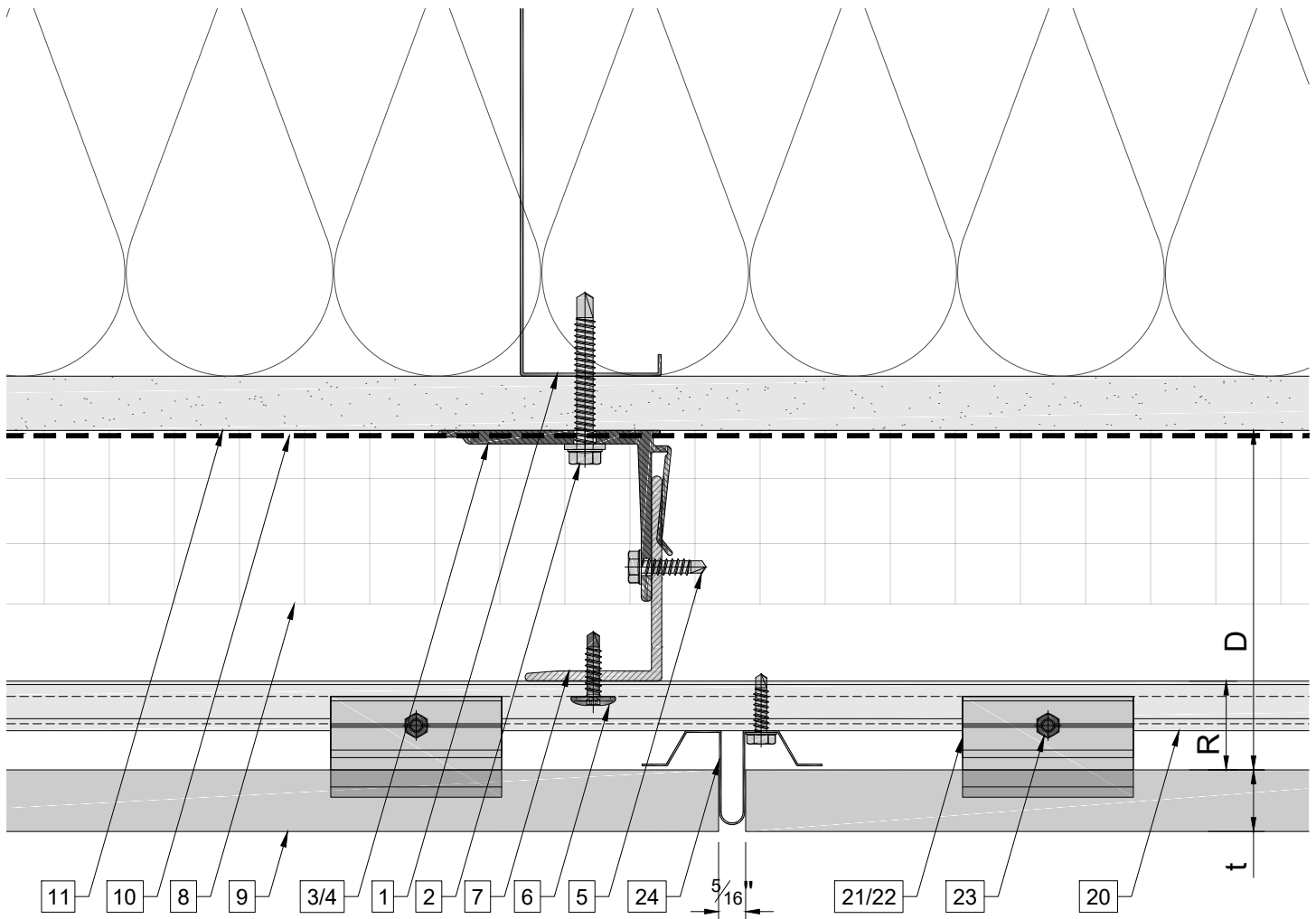
- Steel stud (16 GA typical)
- Perimeter anchor
- Alpha V wall bracket
- Alpha V+ wall bracket
- st/st self-drilling screw ³/₁₆" x ³/₄"
- #12x1 TEKSELECT screw
- Vertical L-profile
- Insulation
- Terracotta panel
- A/V barrier

- Exterior wall
- Outer corner closure 1
- Outer corner closure 2
- Jamb closure
- Horizontal L-profile
- Coping
- Perforated window head closure
- Window sill
- Perforated base closure

- Carrier rail
- Hanger, adjustable
- Hanger, non-adjustable
- S/S adjustment screw
- Vertical joint closure

D - System depth
t - Panel thickness
R - Carrier rail and Hanger

- * Ventilation will vary based on insulation depth.
** Minimum ventilation requirement should be qualified by panel manufacturer.
*** One of adjustable hangers per panel to be fixed with structural silicone



Legend

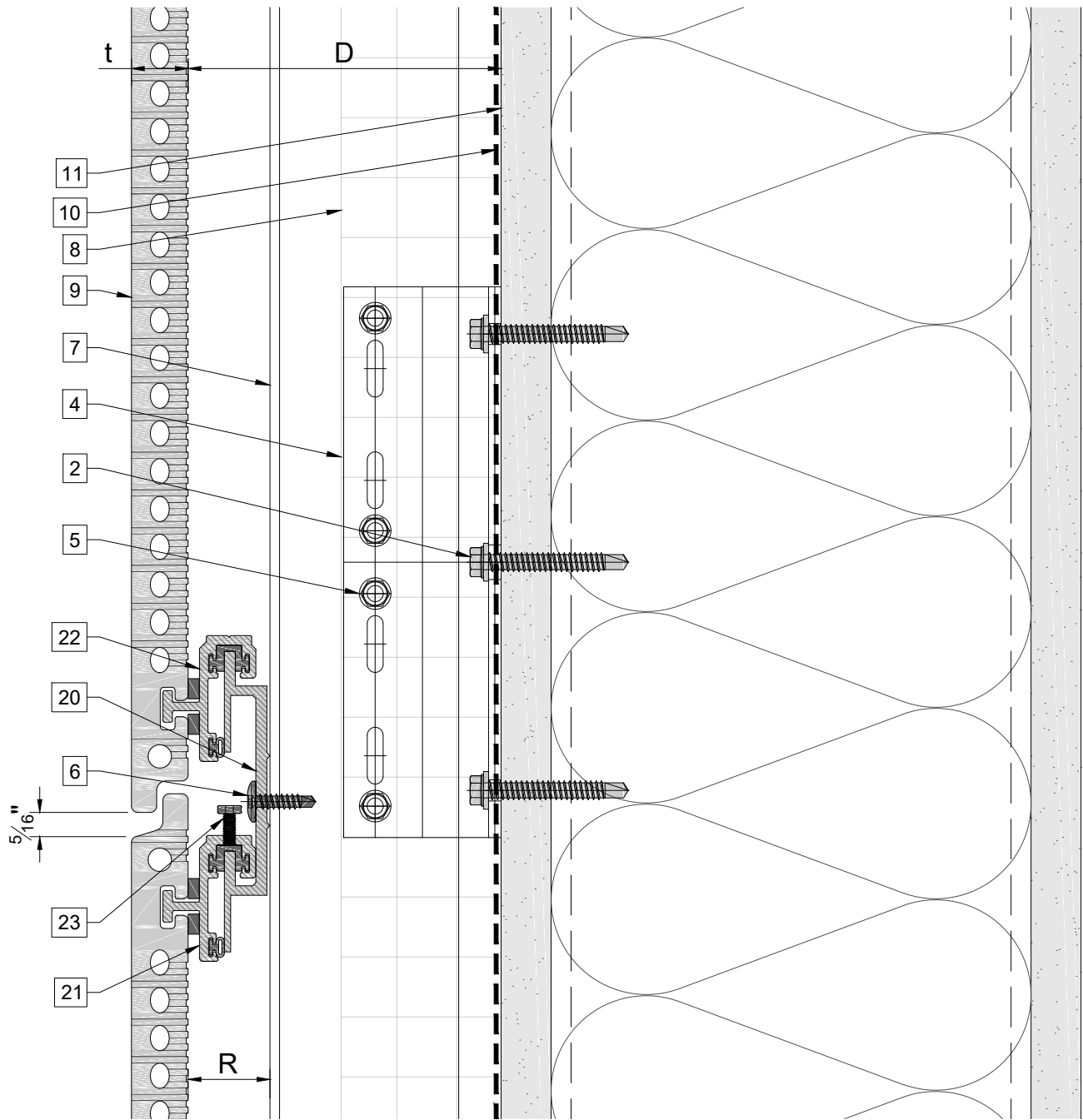
1. Steel stud (16 GA typical)
2. Perimeter anchor
3. Alpha V wall bracket
4. Alpha V+ wall bracket
5. st/st self-drilling screw $\frac{3}{16} \times \frac{3}{4}$ "
6. #12x1 TEKSELECT screw
7. Vertical L-profile
8. Insulation
9. Terracotta panel
10. A/V barrier

11. Exterior wall
12. Outer corner closure 1
13. Outer corner closure 2
14. Jamb closure
15. Horizontal L-profile
16. Coping
17. Perforated window head closure
18. Window sill
19. Perforated base closure

20. Carrier rail
21. Hanger, adjustable
22. Hanger, non-adjustable
23. S/S adjustment screw
24. Vertical joint closure

D - System depth
t - Panel thickness
R - Carrier rail and Hanger

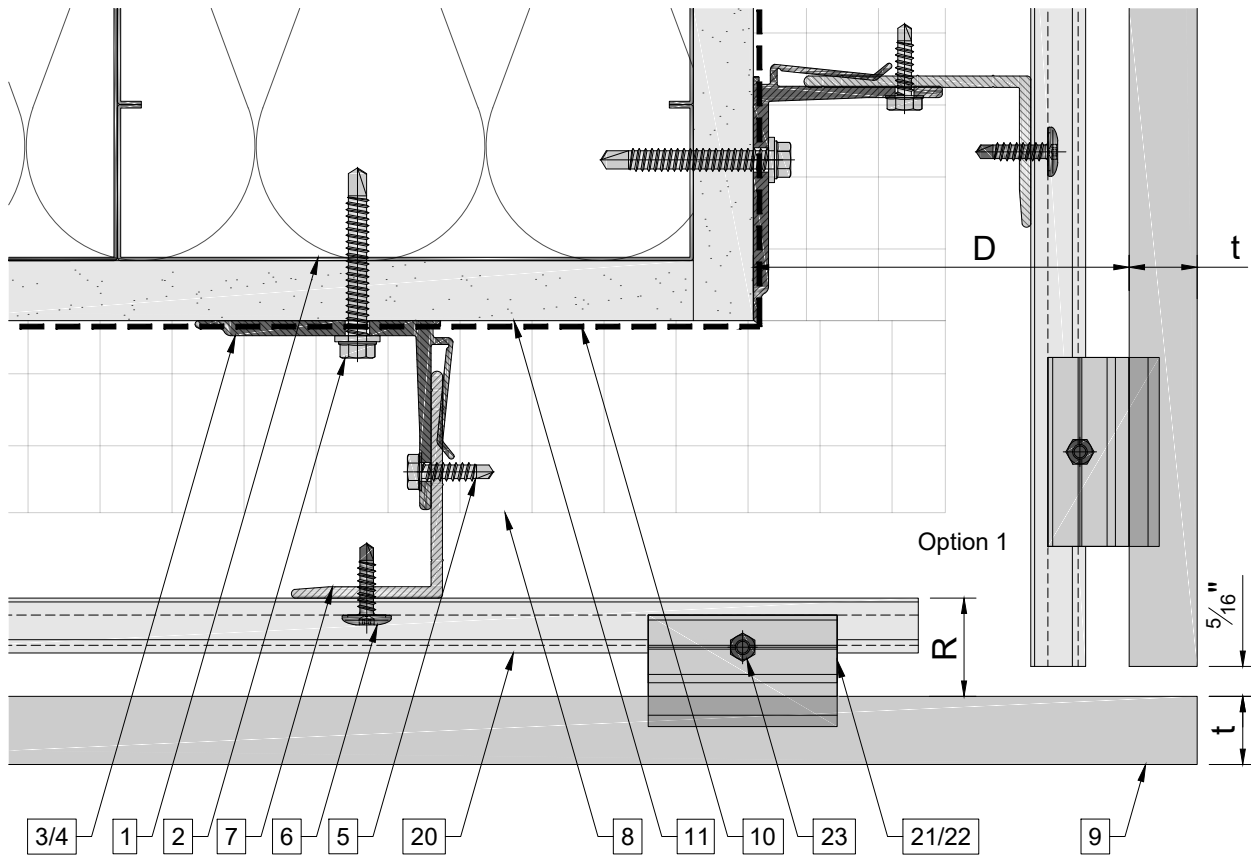
- * Ventilation will vary based on insulation depth.
** Minimum ventilation requirement should be qualified by panel manufacturer.
*** One of adjustable hangers per panel to be fixed with structural silicone



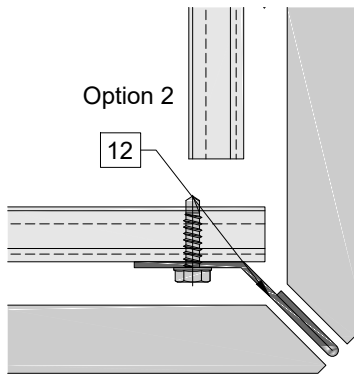
Legend

- | | | |
|--|------------------------------------|----------------------------|
| 1. Steel stud (16 GA typical) | 11. Exterior wall | 20. Carrier rail |
| 2. Perimeter anchor | 12. Outer corner closure 1 | 21. Hanger, adjustable |
| 3. Alpha V wall bracket | 13. Outer corner closure 2 | 22. Hanger, non-adjustable |
| 4. Alpha V+ wall bracket | 14. Jamb closure | 23. S/S adjustment screw |
| 5. st/st self-drilling screw $\frac{3}{16} \times \frac{3}{4}$ " | 15. Horizontal L-profile | 24. Vertical joint closure |
| 6. #12x1 TEKSELECT screw | 16. Coping | |
| 7. Vertical L-profile | 17. Perforated window head closure | |
| 8. Insulation | 18. Window sill | |
| 9. Terracotta panel | 19. Perforated base closure | |
| 10. A/V barrier | | |

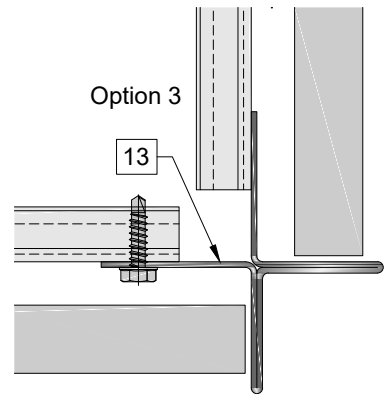
- * Ventilation will vary based on insulation depth.
- ** Minimum ventilation requirement should be qualified by panel manufacturer.
- *** One of adjustable hangers per panel to be fixed with structural silicone



Option 2



Option 3

**Legend**

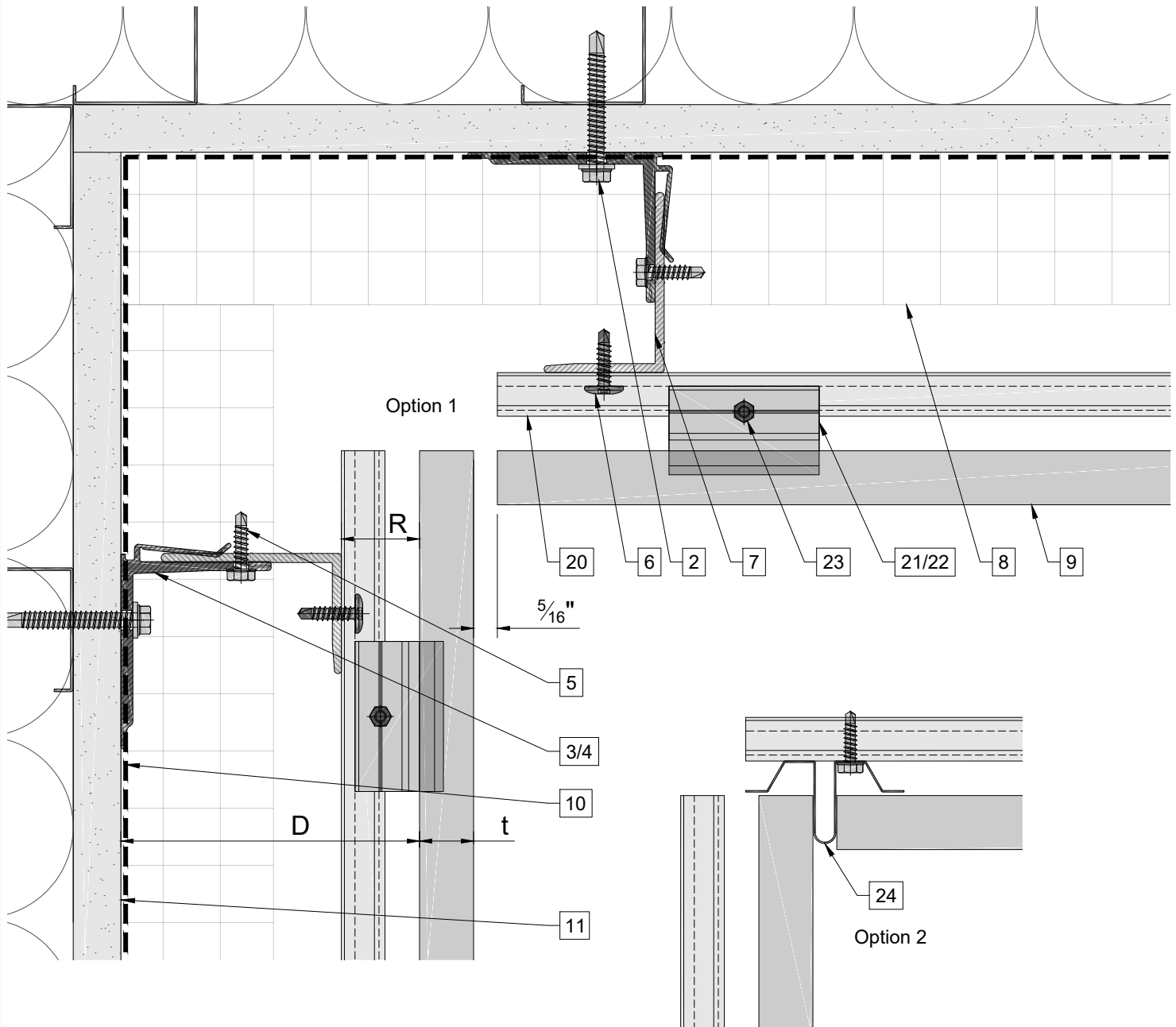
1. Steel stud (16 GA typical)
2. Perimeter anchor
3. Alpha V wall bracket
4. Alpha V+ wall bracket
5. st/st self-drilling screw $\frac{3}{16}'' \times \frac{3}{4}''$
6. #12x1 TEKSELECT screw
7. Vertical L-profile
8. Insulation
9. Terracotta panel
10. A/V barrier

11. Exterior wall
12. Outer corner closure 1
13. Outer corner closure 2
14. Jamb closure
15. Horizontal L-profile
16. Coping
17. Perforated window head closure
18. Window sill
19. Perforated base closure

20. Carrier rail
21. Hanger, adjustable
22. Hanger, non-adjustable
23. S/S adjustment screw
24. Vertical joint closure

D - System depth
t - Panel thickness
R - Carrier rail and Hanger

- * Ventilation will vary based on insulation depth.
 ** Minimum ventilation requirement should be qualified by panel manufacturer.
 *** One of adjustable hangers per panel to be fixed with structural silicone



Legend

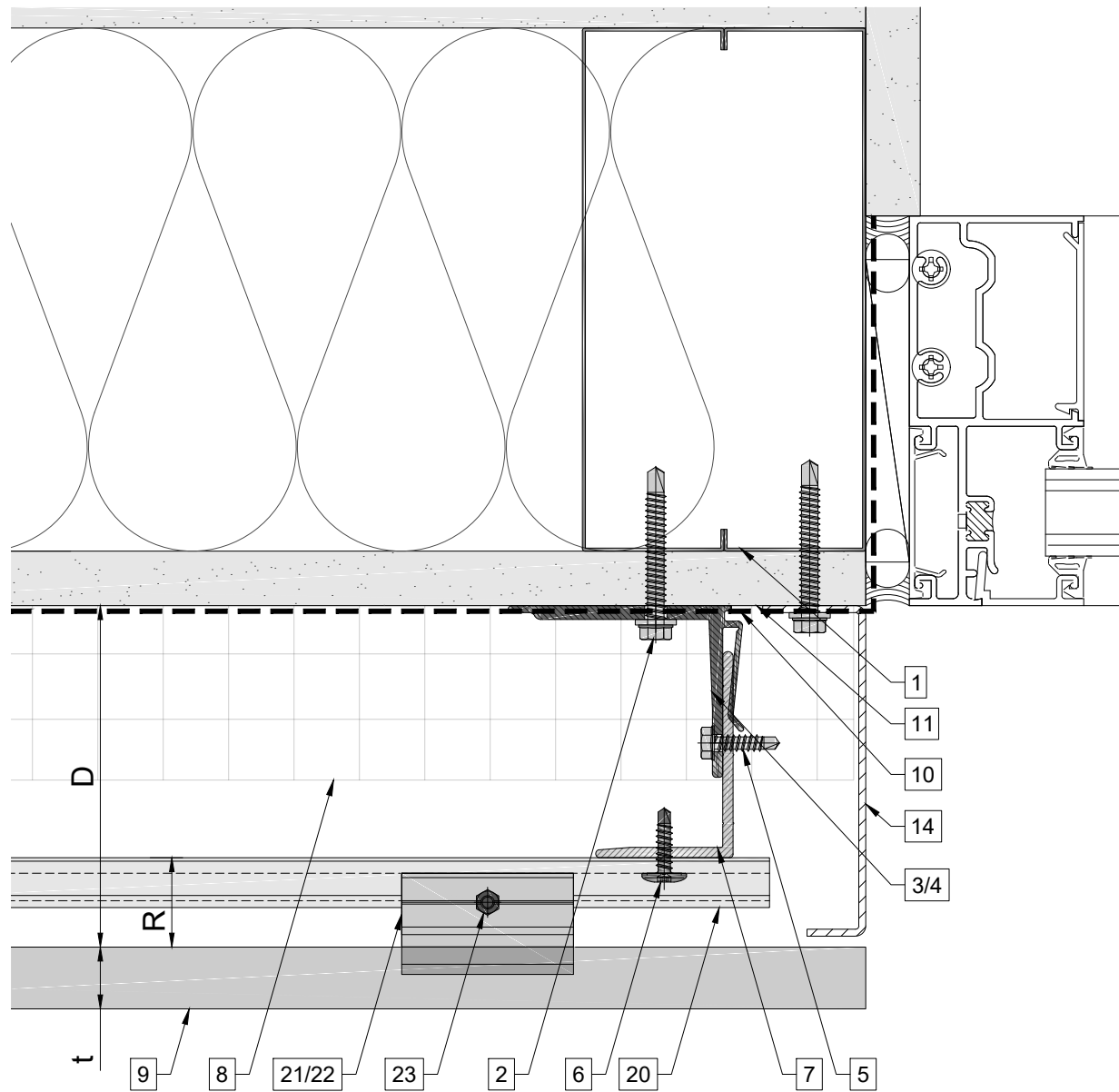
1. Steel stud (16 GA typical)
2. Perimeter anchor
3. Alpha V wall bracket
4. Alpha V+ wall bracket
5. st/st self-drilling screw $\frac{3}{16} \times \frac{3}{4}$ "
6. #12x1 TEKSELECT screw
7. Vertical L-profile
8. Insulation
9. Terracotta panel
10. A/V barrier

11. Exterior wall
12. Outer corner closure 1
13. Outer corner closure 2
14. Jamb closure
15. Horizontal L-profile
16. Coping
17. Perforated window head closure
18. Window sill
19. Perforated base closure

20. Carrier rail
21. Hanger, adjustable
22. Hanger, non-adjustable
23. S/S adjustment screw
24. Vertical joint closure

D - System depth
t - Panel thickness
R - Carrier rail and Hanger

- * Ventilation will vary based on insulation depth.
** Minimum ventilation requirement should be qualified by panel manufacturer.
*** One of adjustable hangers per panel to be fixed with structural silicone



Legend

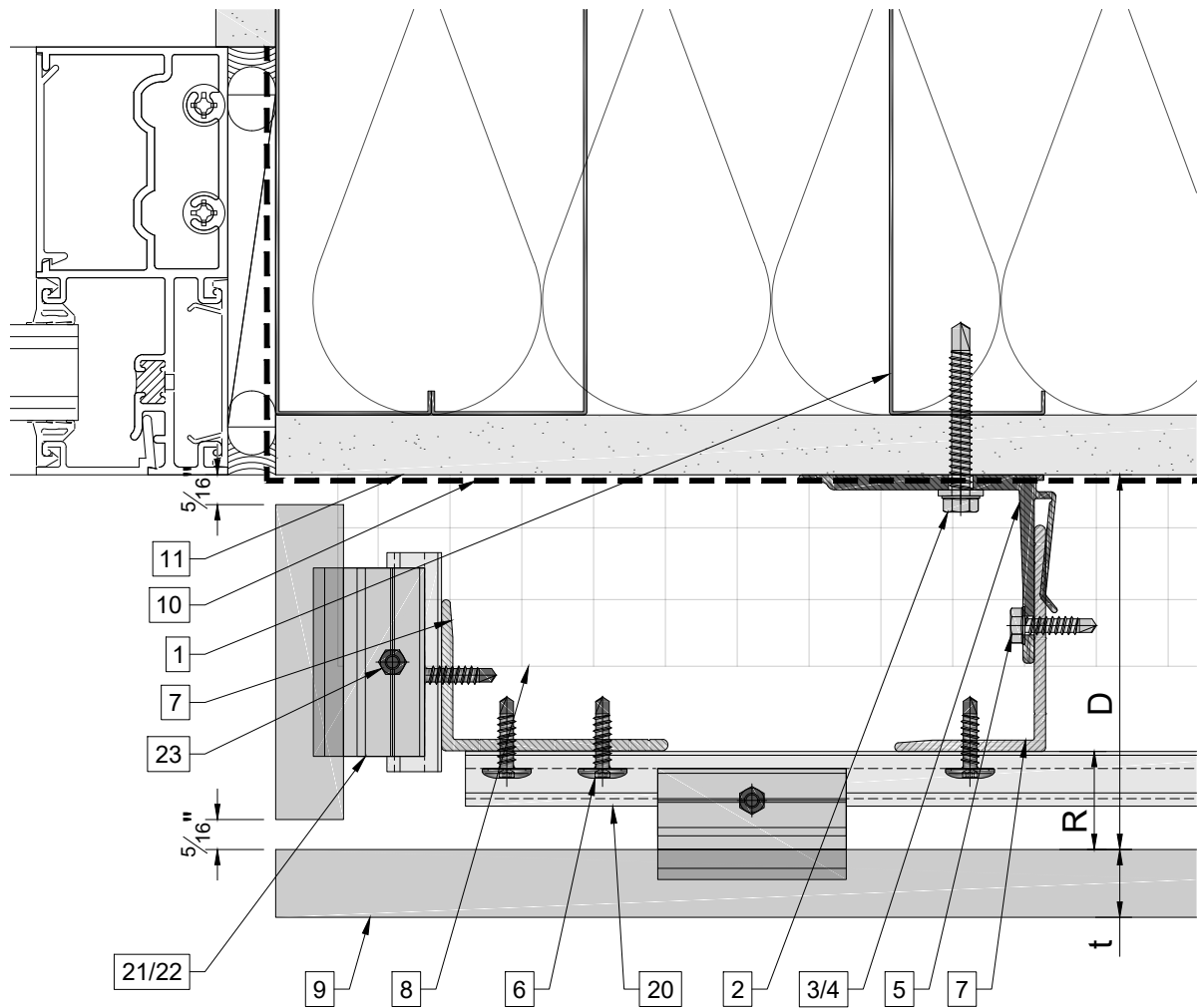
1. Steel stud (16 GA typical)
2. Perimeter anchor
3. Alpha V wall bracket
4. Alpha V+ wall bracket
5. st/st self-drilling screw $\frac{3}{16} \times \frac{3}{4}$ "
6. #12x1 TEKSELECT screw
7. Vertical L-profile
8. Insulation
9. Terracotta panel
10. A/V barrier

11. Exterior wall
12. Outer corner closure 1
13. Outer corner closure 2
14. Jamb closure
15. Horizontal L-profile
16. Coping
17. Perforated window head closure
18. Window sill
19. Perforated base closure

20. Carrier rail
21. Hanger, adjustable
22. Hanger, non-adjustable
23. S/S adjustment screw
24. Vertical joint closure

D - System depth
t - Panel thickness
R - Carrier rail and Hanger

- * Ventilation will vary based on insulation depth.
** Minimum ventilation requirement should be qualified by panel manufacturer.
*** One of adjustable hangers per panel to be fixed with structural silicone



Legend

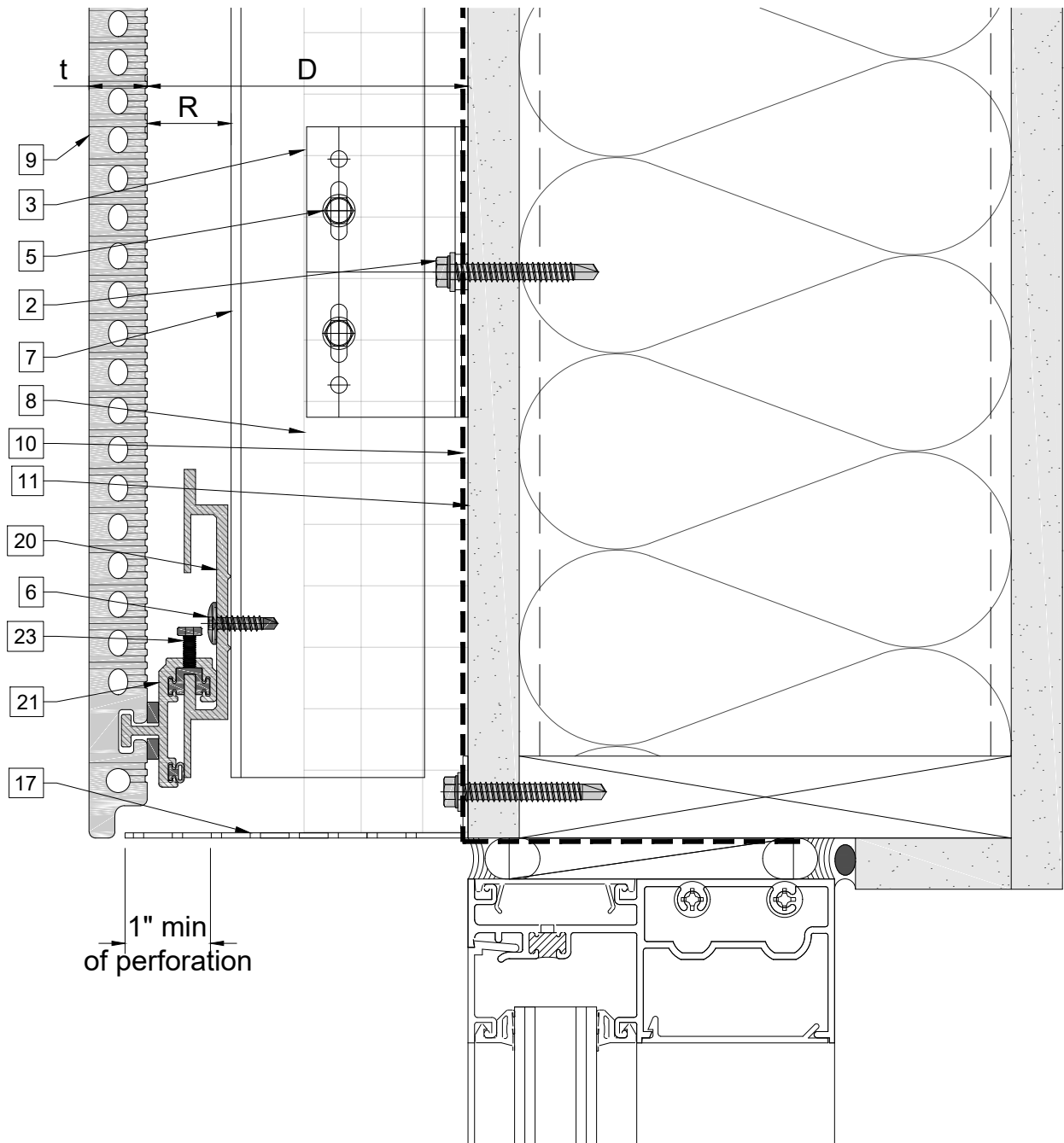
1. Steel stud (16 GA typical)
2. Perimeter anchor
3. Alpha V wall bracket
4. Alpha V+ wall bracket
5. st/st self-drilling screw $\frac{3}{16}'' \times \frac{3}{4}''$
6. #12x1 TEKSELECT screw
7. Vertical L-profile
8. Insulation
9. Terracotta panel
10. A/V barrier

11. Exterior wall
12. Outer corner closure 1
13. Outer corner closure 2
14. Jamb closure
15. Horizontal L-profile
16. Coping
17. Perforated window head closure
18. Window sill
19. Perforated base closure

20. Carrier rail
21. Hanger, adjustable
22. Hanger, non-adjustable
23. S/S adjustment screw
24. Vertical joint closure

D - System depth
t - Panel thickness
R - Carrier rail and Hanger

- * Ventilation will vary based on insulation depth.
** Minimum ventilation requirement should be qualified by panel manufacturer.
*** One of adjustable hangers per panel to be fixed with structural silicone



Legend

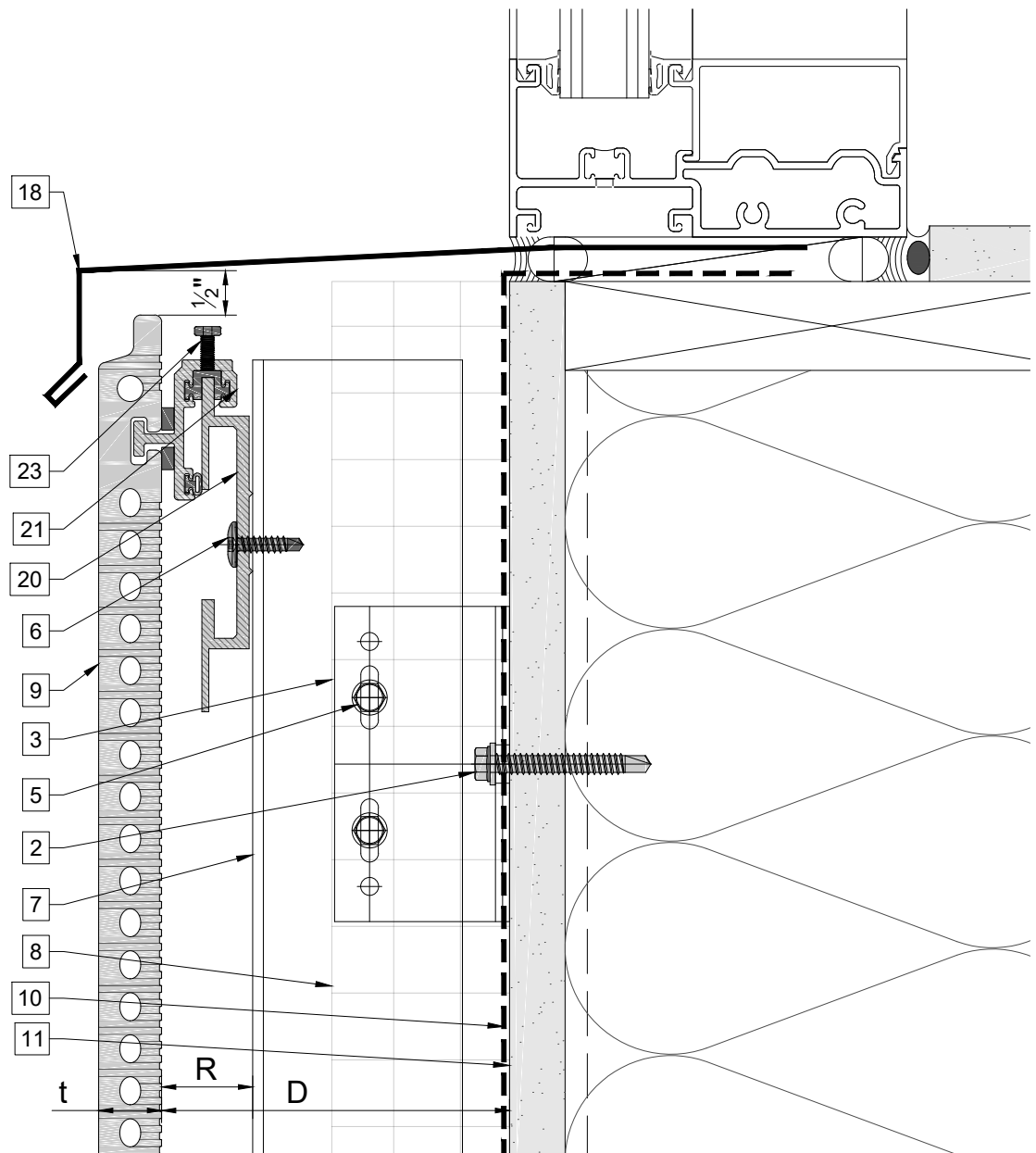
1. Steel stud (16 GA typical)
2. Perimeter anchor
3. Alpha V wall bracket
4. Alpha V+ wall bracket
5. st/st self-drilling screw $\frac{3}{16} \times \frac{3}{4}$ "
6. #12x1 TEKSELECT screw
7. Vertical L-profile
8. Insulation
9. Terracotta panel
10. A/V barrier

11. Exterior wall
12. Outer corner closure 1
13. Outer corner closure 2
14. Jamb closure
15. Horizontal L-profile
16. Coping
17. Perforated window head closure
18. Window sill
19. Perforated base closure

20. Carrier rail
21. Hanger, adjustable
22. Hanger, non-adjustable
23. S/S adjustment screw
24. Vertical joint closure

D - System depth
t - Panel thickness
R - Carrier rail and Hanger

- * Ventilation will vary based on insulation depth.
** Minimum ventilation requirement should be qualified by panel manufacturer.
*** One of adjustable hangers per panel to be fixed with structural silicone



Legend

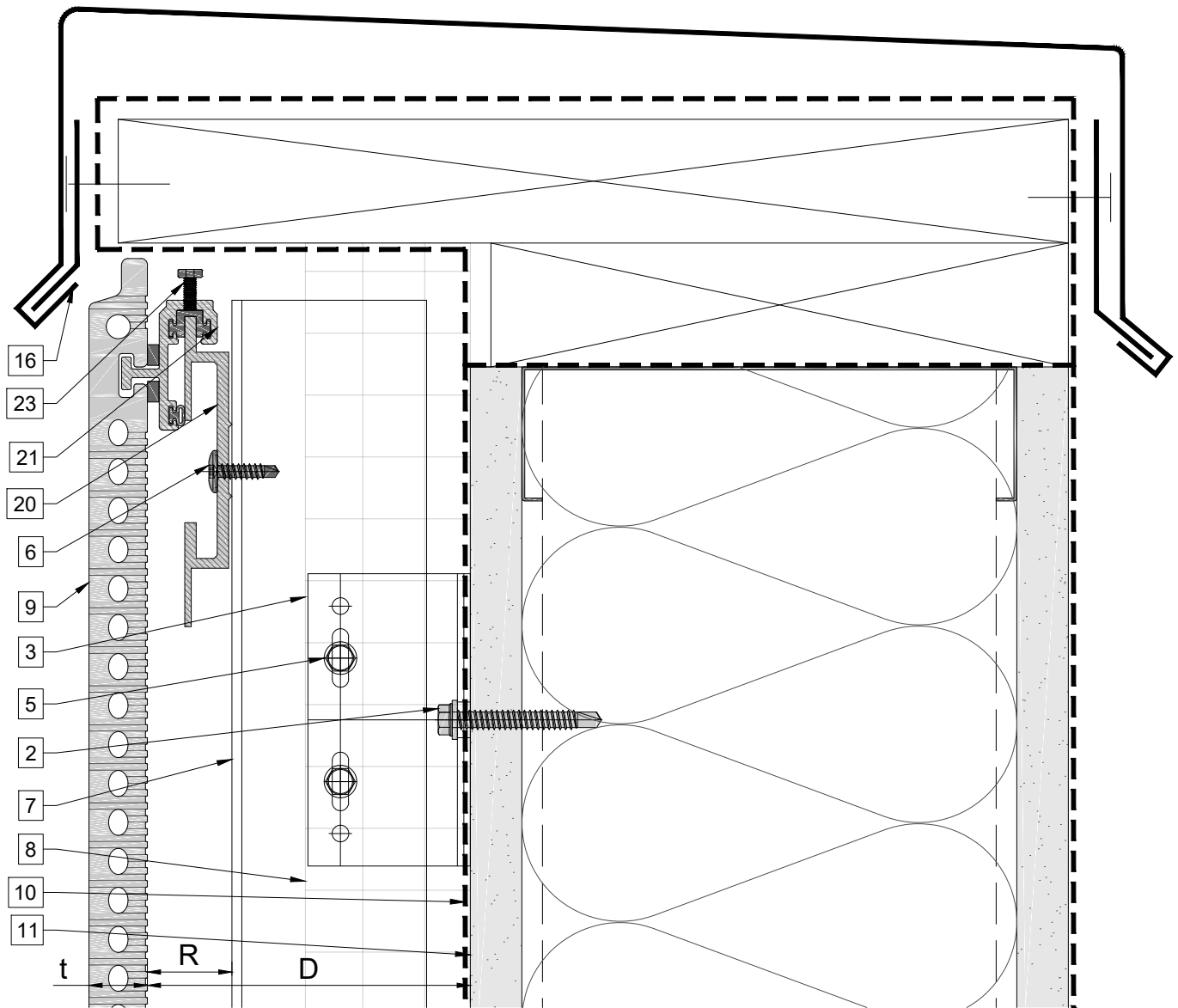
1. Steel stud (16 GA typical)
2. Perimeter anchor
3. Alpha V wall bracket
4. Alpha V+ wall bracket
5. st/st self-drilling screw $\frac{3}{16}$ " x $\frac{3}{4}$ "
6. #12x1 TEKSELECT screw
7. Vertical L-profile
8. Insulation
9. Terracotta panel
10. A/V barrier

11. Exterior wall
12. Outer corner closure 1
13. Outer corner closure 2
14. Jamb closure
15. Horizontal L-profile
16. Coping
17. Perforated window head closure
18. Window sill
19. Perforated base closure

20. Carrier rail
21. Hanger, adjustable
22. Hanger, non-adjustable
23. S/S adjustment screw
24. Vertical joint closure

D - System depth
t - Panel thickness
R - Carrier rail and Hanger

- * Ventilation will vary based on insulation depth.
** Minimum ventilation requirement should be qualified by panel manufacturer.
*** One of adjustable hangers per panel to be fixed with structural silicone



Legend

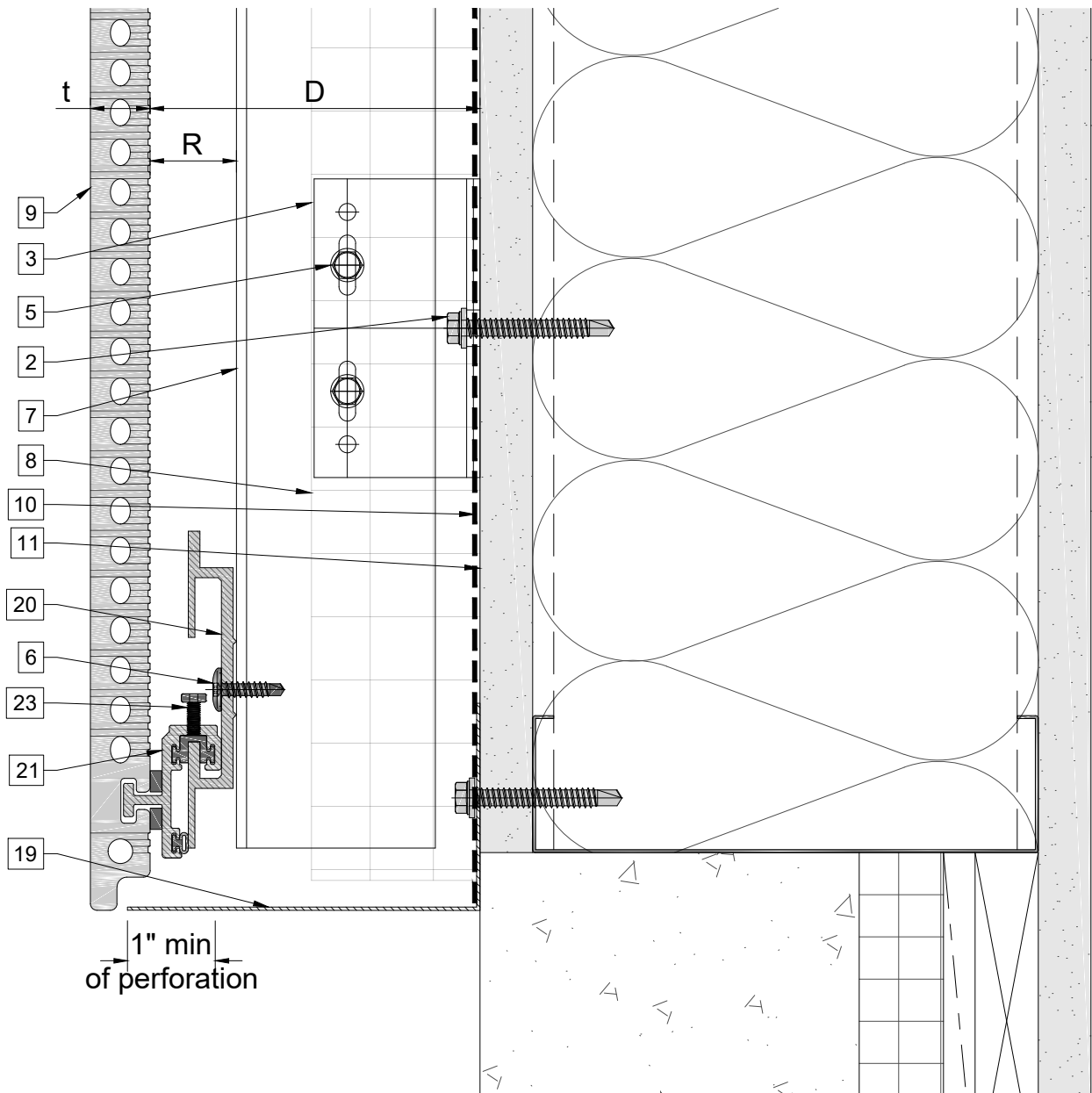
1. Steel stud (16 GA typical)
2. Perimeter anchor
3. Alpha V wall bracket
4. Alpha V+ wall bracket
5. st/st self-drilling screw $\frac{3}{16} \times \frac{3}{4}$ "
6. #12x1 TEKSELECT screw
7. Vertical L-profile
8. Insulation
9. Terracotta panel
10. A/V barrier

11. Exterior wall
12. Outer corner closure 1
13. Outer corner closure 2
14. Jamb closure
15. Horizontal L-profile
16. Coping
17. Perforated window head closure
18. Window sill
19. Perforated base closure

20. Carrier rail
21. Hanger, adjustable
22. Hanger, non-adjustable
23. S/S adjustment screw
24. Vertical joint closure

D - System depth
t - Panel thickness
R - Carrier rail and Hanger

- * Ventilation will vary based on insulation depth.
 ** Minimum ventilation requirement should be qualified by panel manufacturer.
 *** One of adjustable hangers per panel to be fixed with structural silicone



Legend

1. Steel stud (16 GA typical)
2. Perimeter anchor
3. Alpha V wall bracket
4. Alpha V+ wall bracket
5. st/st self-drilling screw $\frac{3}{16}'' \times \frac{3}{4}''$
6. #12x1 TEKSELECT screw
7. Vertical L-profile
8. Insulation
9. Terracotta panel
10. A/V barrier

11. Exterior wall
12. Outer corner closure 1
13. Outer corner closure 2
14. Jamb closure
15. Horizontal L-profile
16. Coping
17. Perforated window head closure
18. Window sill
19. Perforated base closure

20. Carrier rail
21. Hanger, adjustable
22. Hanger, non-adjustable
23. S/S adjustment screw
24. Vertical joint closure

D - System depth
t - Panel thickness
R - Carrier rail and Hanger

- * Ventilation will vary based on insulation depth.
 ** Minimum ventilation requirement should be qualified by panel manufacturer.
 *** One of adjustable hangers per panel to be fixed with structural silicone