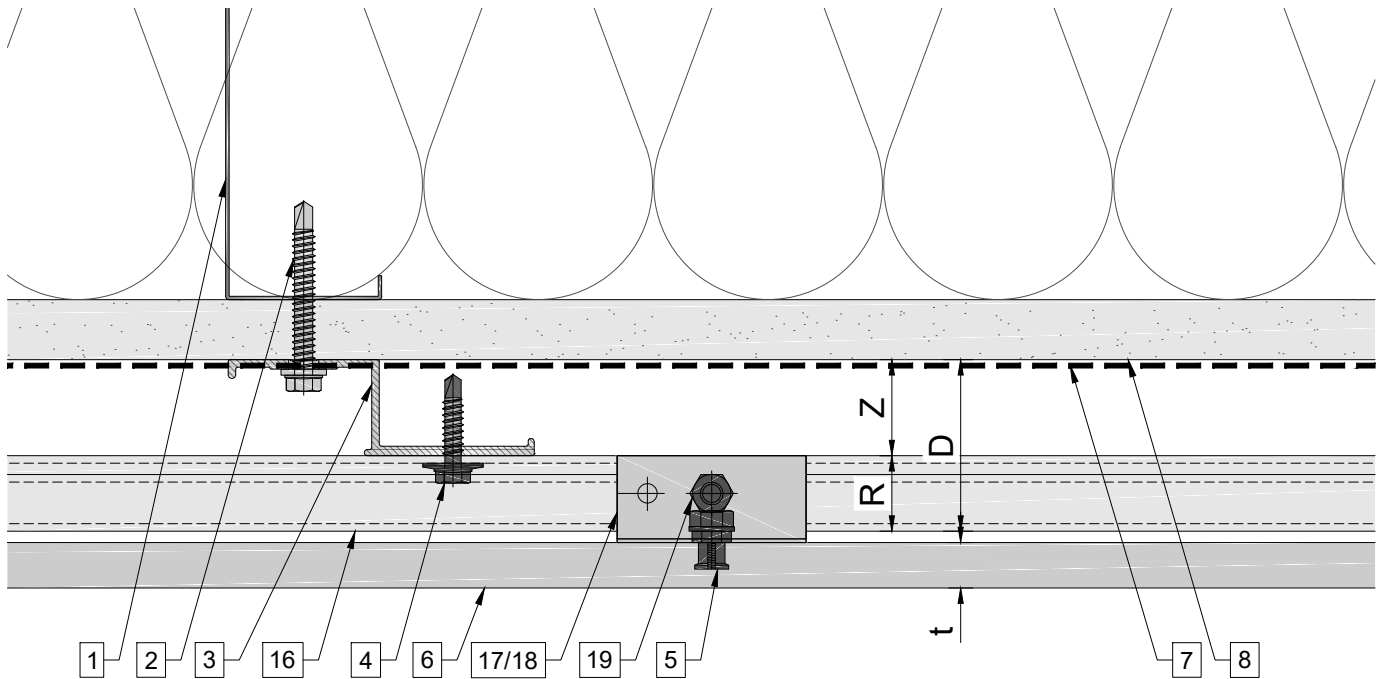


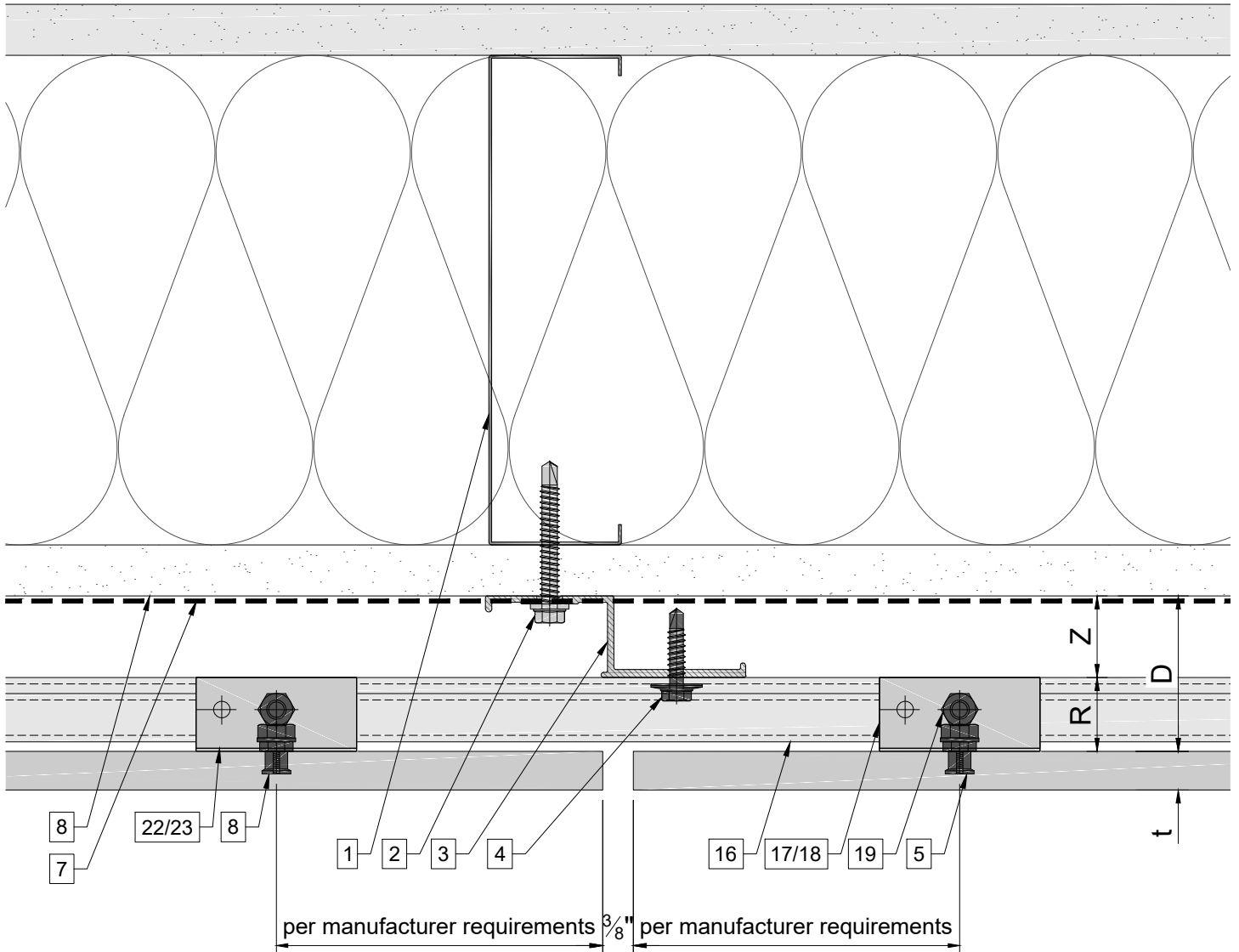
# System depth



D - System depth,  $D=1\frac{7}{8}"$   
 R - C-carrier rail and C-hanger,  $R=\frac{7}{8}"$  (23mm)  
 Z - Z-profile Thickness,  $Z=1"$  (25mm)  
 t - Panel Thickness,  $t=$ varies

Legend			
1. Steel stud (16 GA typical)	12. Coping	D - System depth	* Ventilation will vary based on insulation depth. ** Minimum ventilation requirement should be qualified by panel manufacturer. *** One of adjustable C-hangers per panel to be fixed with fixing screw $\frac{3}{16}" \times 1"$
2. Perimeter anchor	13. Perforated window head closure	t - Panel thickness	
3. Vertical 1" Z-profile	14. Window sill	R - C-carrier rail and C-hanger	
4. st/st self-drilling screw $\frac{1}{4}" \times 1"$	15. Perforated base closure	Z - Z-profile thickness	
5. Undercut anchor	16. C-carrier rail		
6. Panel	17. C-hanger, adjustable		
7. A/V barrier	18. C-hanger, non-adjustable		
8. Exterior wall	19. Leveling bolt M6		
9. Outer corner closure	20. Fixing screw $\frac{3}{16}" \times 1"$		
10. Inner corner closure	21. Rivet		
11. Jamb closure			

# Vertical joint



### Legend

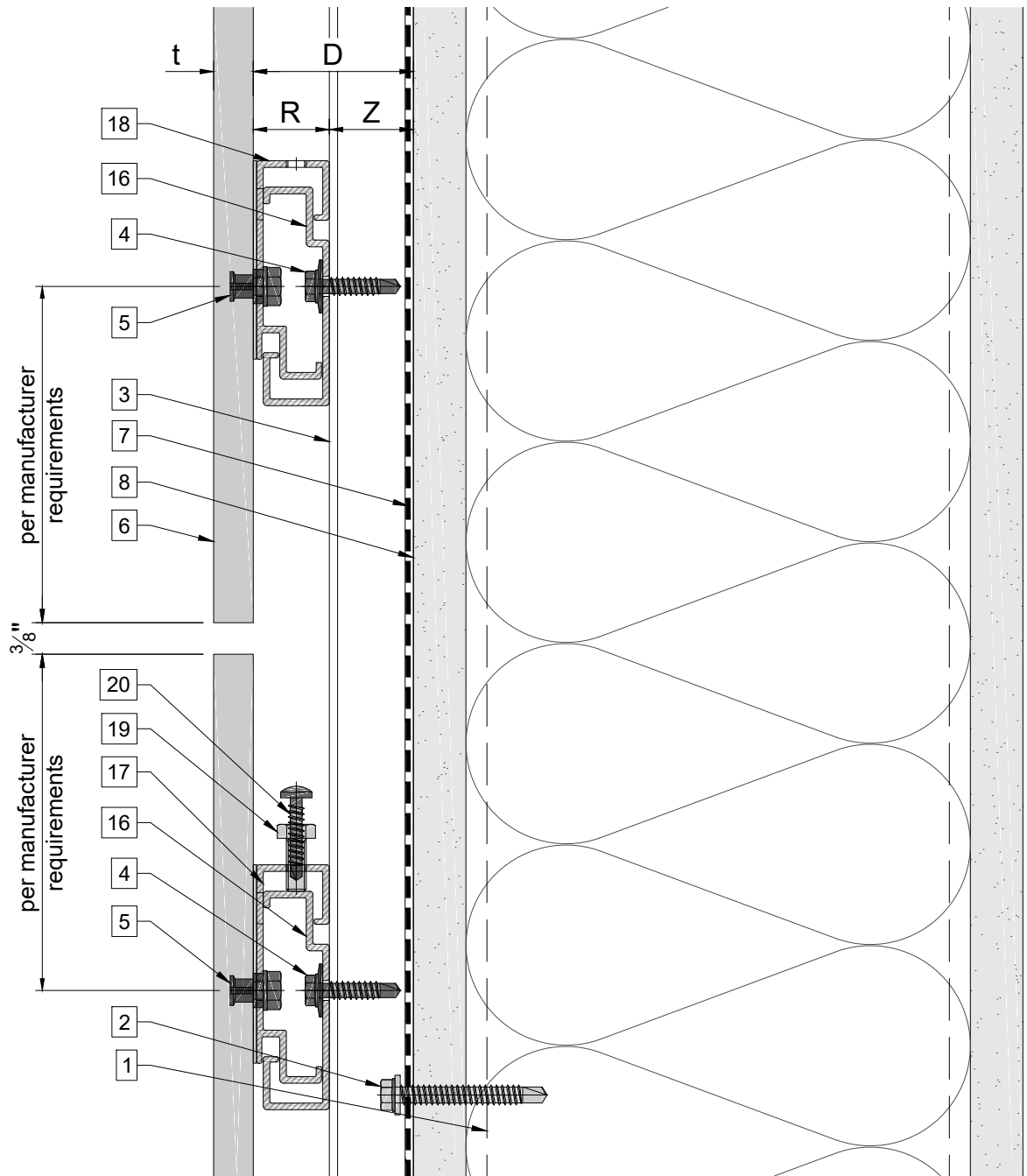
- 1. Steel stud (16 GA typical)
- 2. Perimeter anchor
- 3. Vertical 1" Z-profile
- 4. st/st self-drilling screw  $\frac{1}{4}" \times 1"$
- 5. Undercut anchor
- 6. Panel
- 7. A/V barrier
- 8. Exterior wall
- 9. Outer corner closure
- 10. Inner corner closure
- 11. Jamb closure

- 12. Coping
- 13. Perforated window head closure
- 14. Window sill
- 15. Perforated base closure
- 16. C-carrier rail
- 17. C-hanger, adjustable
- 18. C-hanger, non-adjustable
- 19. Leveling bolt M6
- 20. Fixing screw  $\frac{3}{16}" \times 1"$
- 21. Rivet

D - System depth  
 t - Panel thickness  
 R - C-carrier rail and C-hanger  
 Z - Z-profile thickness

\* Ventilation will vary based on insulation depth.  
 \*\* Minimum ventilation requirement should be qualified by panel manufacturer.  
 \*\*\* One of adjustable C-hangers per panel to be fixed with fixing screw  $\frac{3}{16}" \times 1"$

# Horizontal joint



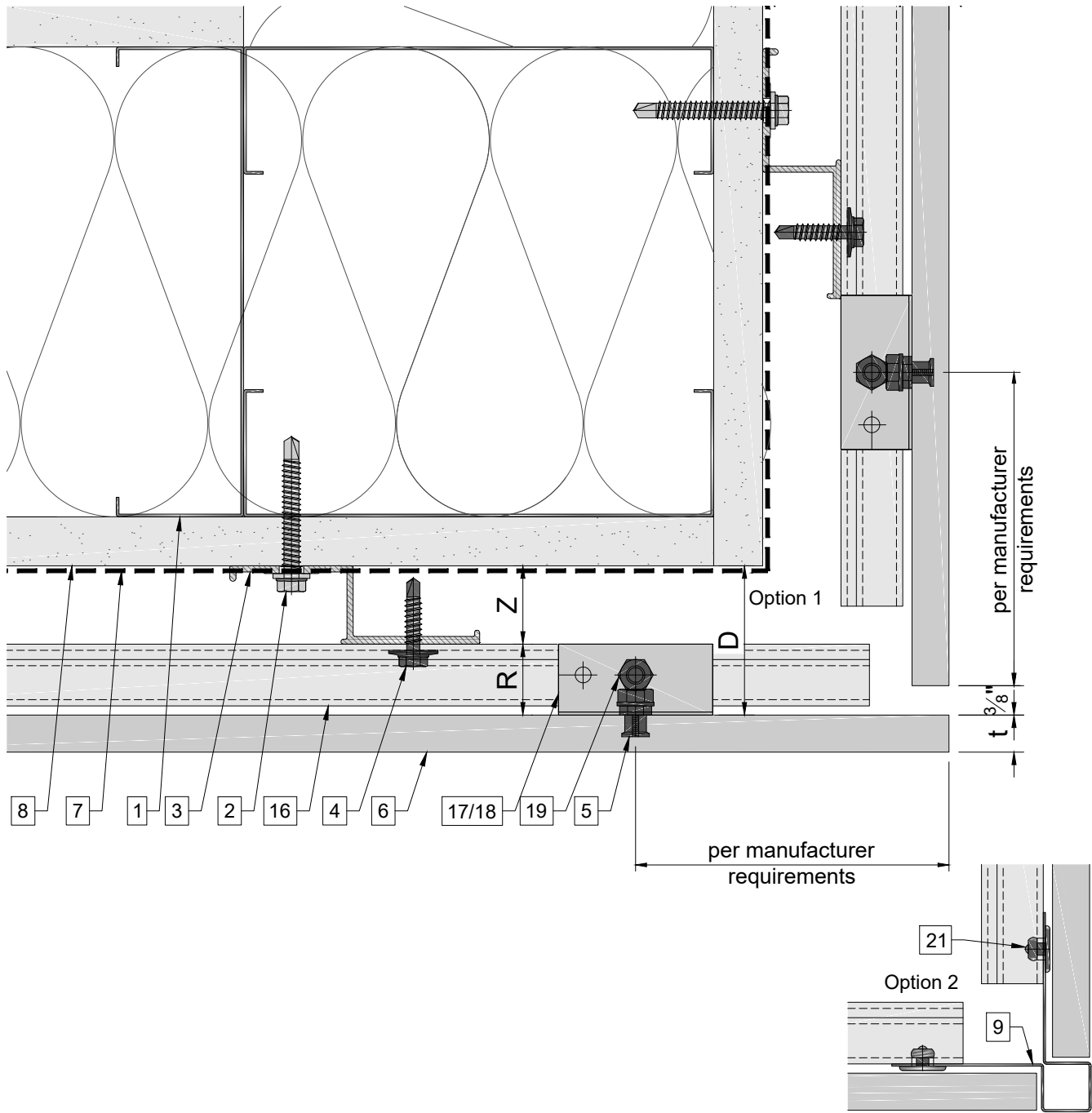
### Legend

- |   |                                      |
|---|--------------------------------------|
| 1. Steel stud (16 GA typical)                   | 12. Coping                           |
| 2. Perimeter anchor                             | 13. Perforated window head closure   |
| 3. Vertical 1" Z-profile                        | 14. Window sill                      |
| 4. st/st self-drilling screw $\frac{1}{4}$ "x1" | 15. Perforated base closure          |
| 5. Undercut anchor                              | 16. C-carrier rail                   |
| 6. Panel  | 17. C-hanger, adjustable             |
| 7. A/V barrier                                  | 18. C-hanger, non-adjustable         |
| 8. Exterior wall                                | 19. Leveling bolt M6                 |
| 9. Outer corner closure                         | 20. Fixing screw $\frac{3}{16}$ "x1" |
| 10. Inner corner closure                        | 21. Rivet                            |
| 11. Jamb closure                                |                                      |

D - System depth  
 t - Panel thickness  
 R - C-carrier rail and C-hanger  
 Z - Z-profile thickness

\* Ventilation will vary based on insulation depth.  
 \*\* Minimum ventilation requirement should be qualified by panel manufacturer.  
 \*\*\* One of adjustable C-hangers per panel to be fixed with fixing screw  $\frac{3}{16}$ "x1"

# Outer corner



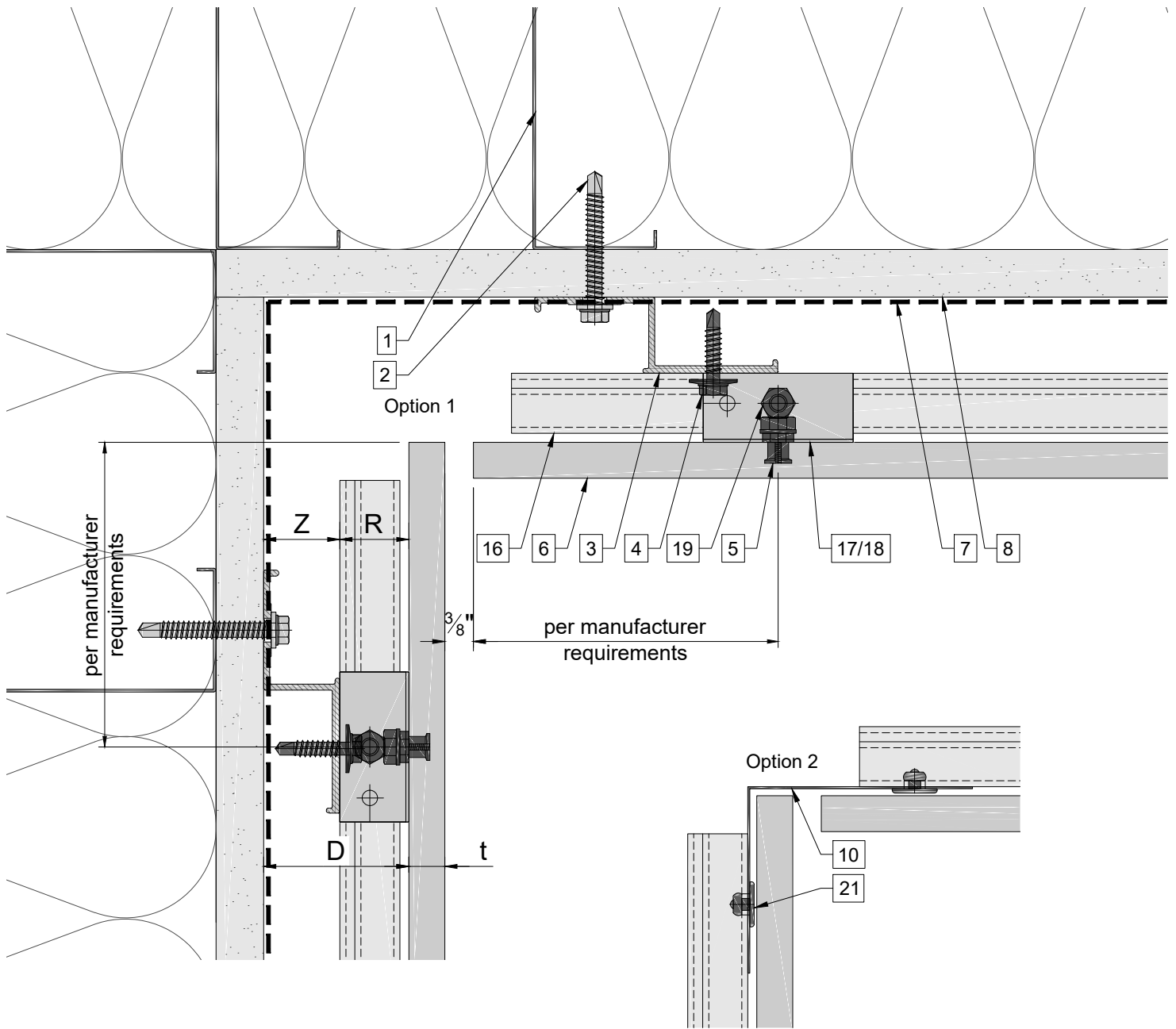
**Legend**

- 1. Steel stud (16 GA typical)
- 2. Perimeter anchor
- 3. Vertical 1" Z-profile
- 4. st/st self-drilling screw  $\frac{1}{4}" \times 1"$
- 5. Undercut anchor
- 6. Panel
- 7. A/V barrier
- 8. Exterior wall
- 9. Outer corner closure
- 10. Inner corner closure
- 11. Jamb closure

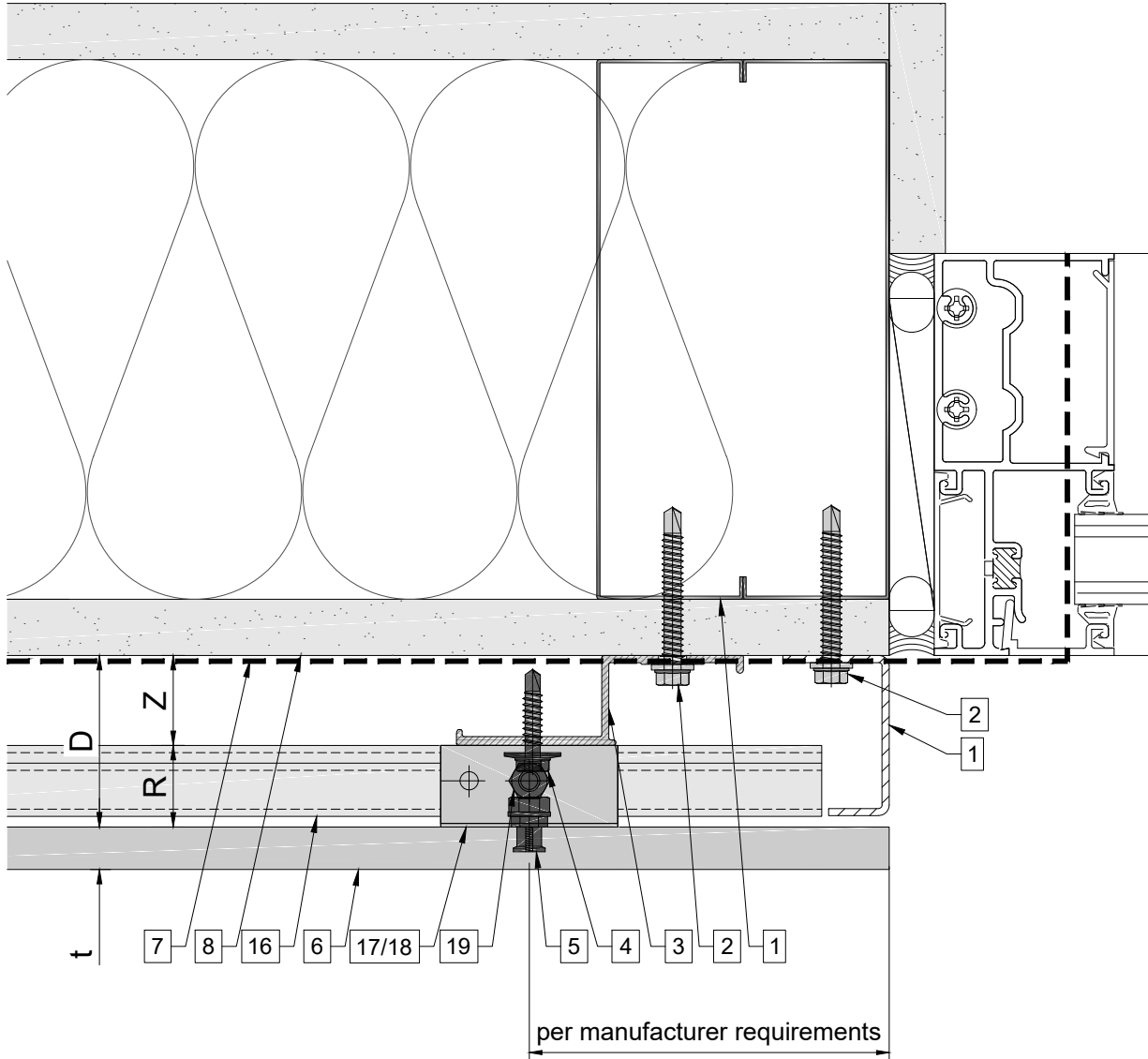
- 12. Coping
- 13. Perforated window head closure
- 14. Window sill
- 15. Perforated base closure
- 16. C-carrier rail
- 17. C-hanger, adjustable
- 18. C-hanger, non-adjustable
- 19. Leveling bolt M6
- 20. Fixing screw  $\frac{3}{16}" \times 1"$
- 21. Rivet

D - System depth  
 t - Panel thickness  
 R - C-carrier rail and C-hanger  
 Z - Z-profile thickness

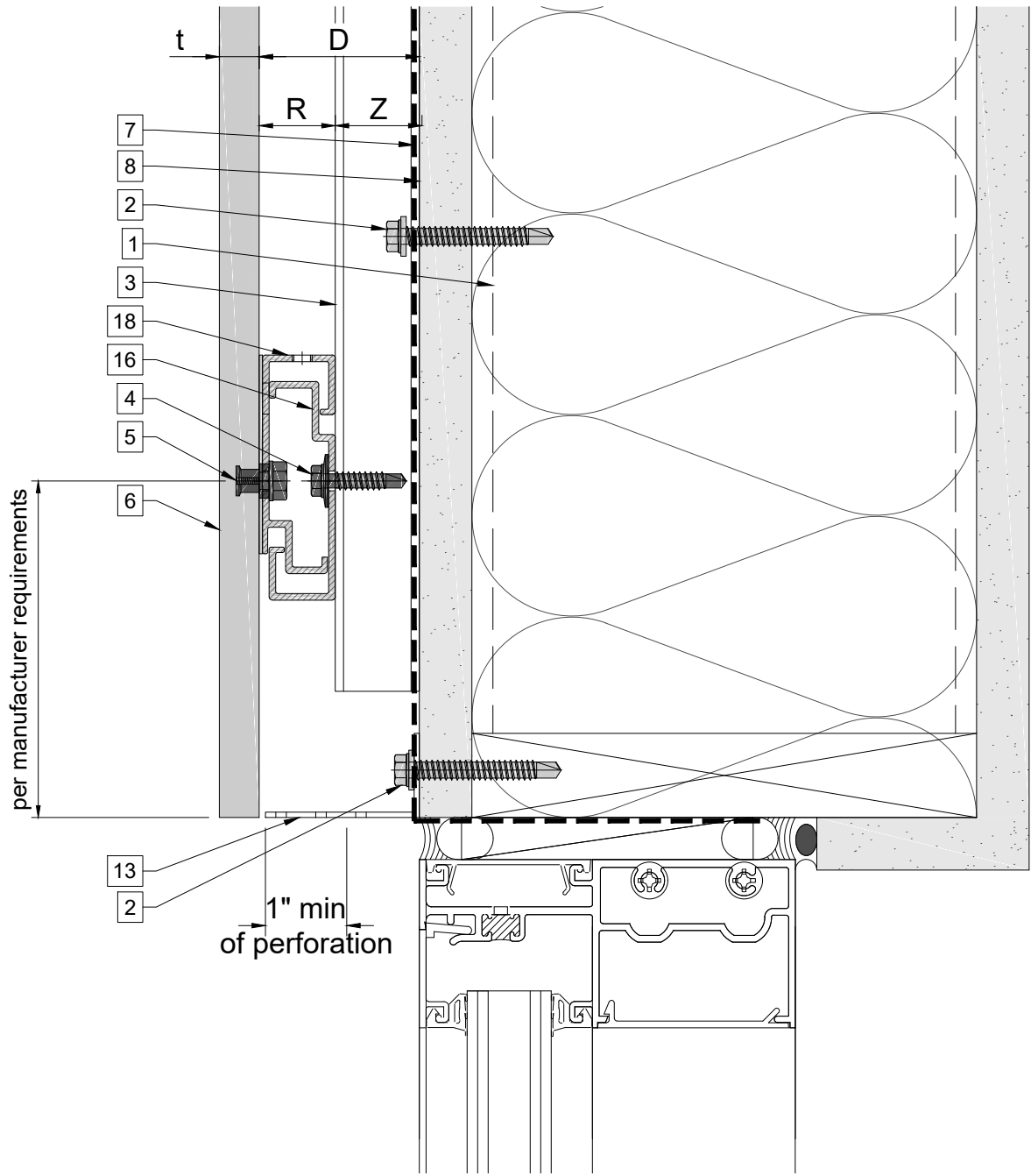
- \* Ventilation will vary based on insulation depth.
- \*\* Minimum ventilation requirement should be qualified by panel manufacturer.
- \*\*\* One of adjustable C-hangers per panel to be fixed with fixing screw  $\frac{3}{16}" \times 1"$



Legend			
1. Steel stud (16 GA typical)	12. Coping	D - System depth	* Ventilation will vary based on insulation depth. ** Minimum ventilation requirement should be qualified by panel manufacturer. *** One of adjustable C-hangers per panel to be fixed with fixing screw $\frac{3}{16}$ "x1"
2. Perimeter anchor	13. Perforated window head closure	t - Panel thickness	
3. Vertical 1" Z-profile	14. Window sill	R - C-carrier rail and C-hanger	
4. st/st self-drilling screw $\frac{1}{4}$ "x1"	15. Perforated base closure	Z - Z-profile thickness	
5. Undercut anchor	16. C-carrier rail		
6. Panel	17. C-hanger, adjustable		
7. A/V barrier	18. C-hanger, non-adjustable		
8. Exterior wall	19. Leveling bolt M6		
9. Outer corner closure	20. Fixing screw $\frac{3}{16}$ "x1"		
10. Inner corner closure	21. Rivet		
11. Jamb closure			

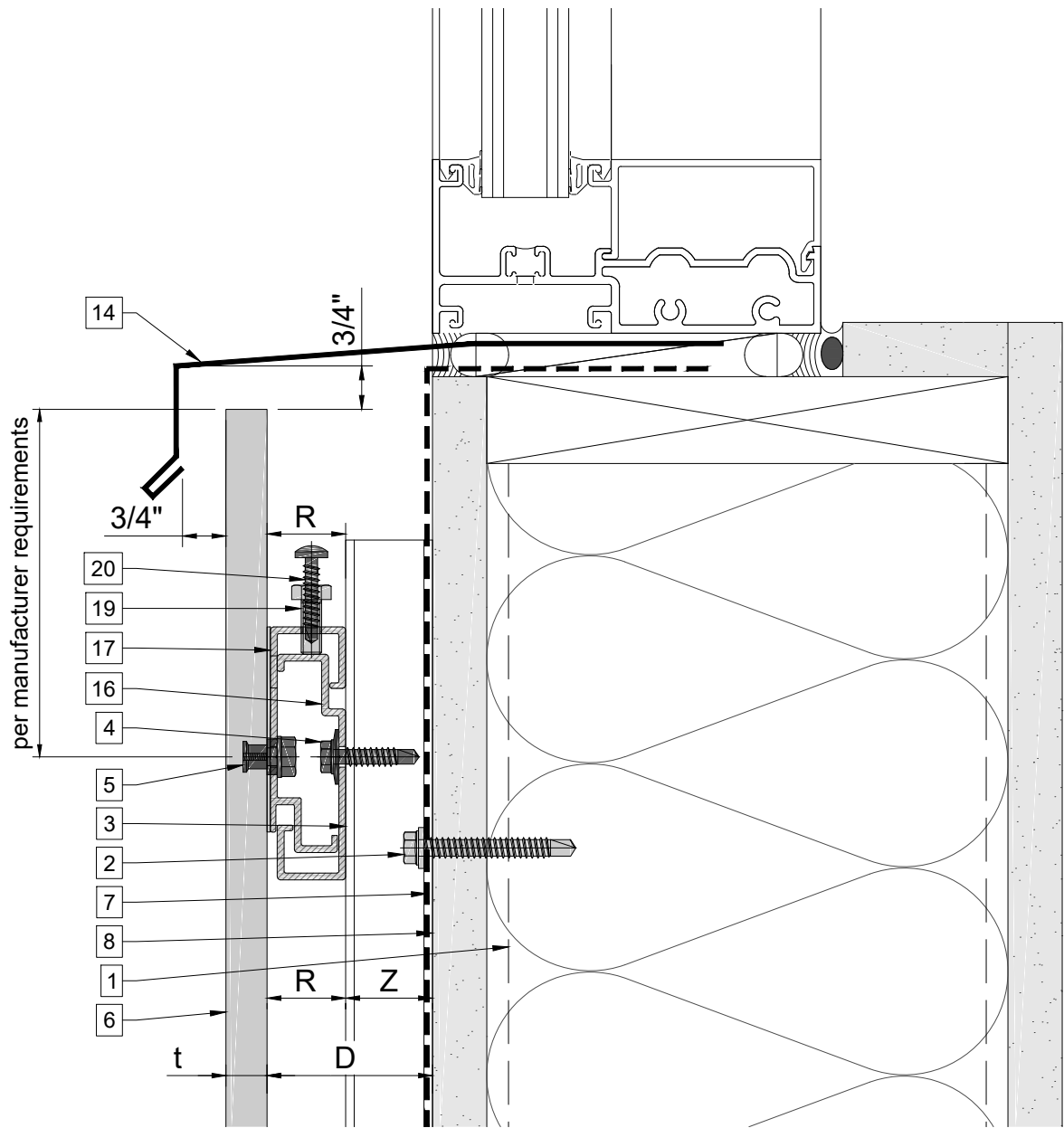


Legend			
1. Steel stud (16 GA typical)	12. Coping	D - System depth	* Ventilation will vary based on insulation depth. ** Minimum ventilation requirement should be qualified by panel manufacturer. *** One of adjustable C-hangers per panel to be fixed with fixing screw $\frac{3}{16}$ "x1"
2. Perimeter anchor	13. Perforated window head closure	t - Panel thickness	
3. Vertical 1" Z-profile	14. Window sill	R - C-carrier rail and C-hanger	
4. st/st self-drilling screw $\frac{1}{4}$ "x1"	15. Perforated base closure	Z - Z-profile thickness	
5. Undercut anchor	16. C-carrier rail		
6. Panel	17. C-hanger, adjustable		
7. A/V barrier	18. C-hanger, non-adjustable		
8. Exterior wall	19. Leveling bolt M6		
9. Outer corner closure	20. Fixing screw $\frac{3}{16}$ "x1"		
10. Inner corner closure	21. Rivet		
11. Jamb closure			



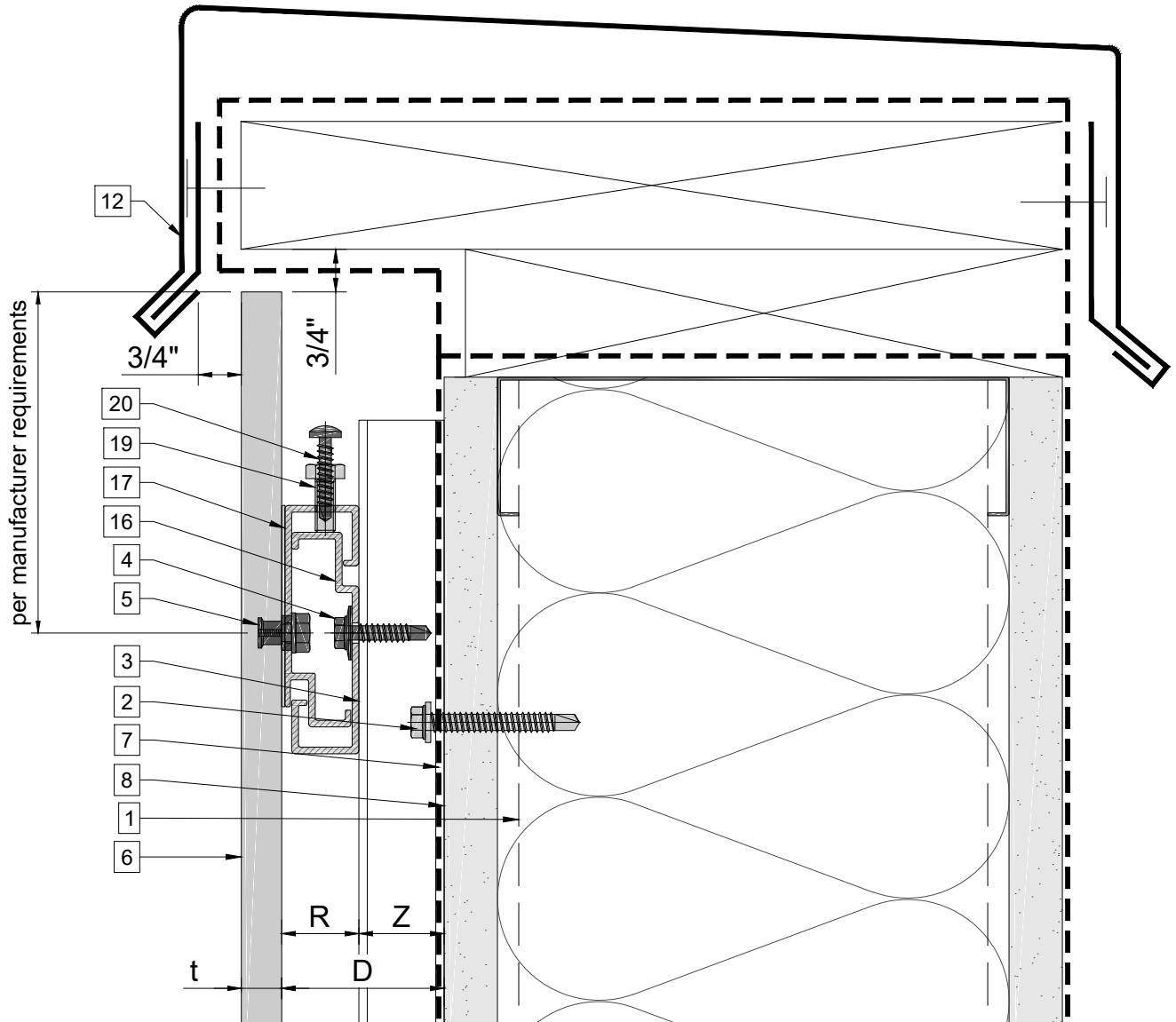
Legend			
1. Steel stud (16 GA typical)	12. Coping	D - System depth	* Ventilation will vary based on insulation depth. ** Minimum ventilation requirement should be qualified by panel manufacturer. *** One of adjustable C-hangers per panel to be fixed with fixing screw $\frac{3}{16}$ "x1"
2. Perimeter anchor	13. Perforated window head closure	t - Panel thickness	
3. Vertical 1" Z-profile	14. Window sill	R - C-carrier rail and C-hanger	
4. st/st self-drilling screw $\frac{1}{4}$ "x1"	15. Perforated base closure	Z - Z-profile thickness	
5. Undercut anchor	16. C-carrier rail		
6. Panel	17. C-hanger, adjustable		
7. A/V barrier	18. C-hanger, non-adjustable		
8. Exterior wall	19. Leveling bolt M6		
9. Outer corner closure	20. Fixing screw $\frac{3}{16}$ "x1"		
10. Inner corner closure	21. Rivet		
11. Jamb closure			





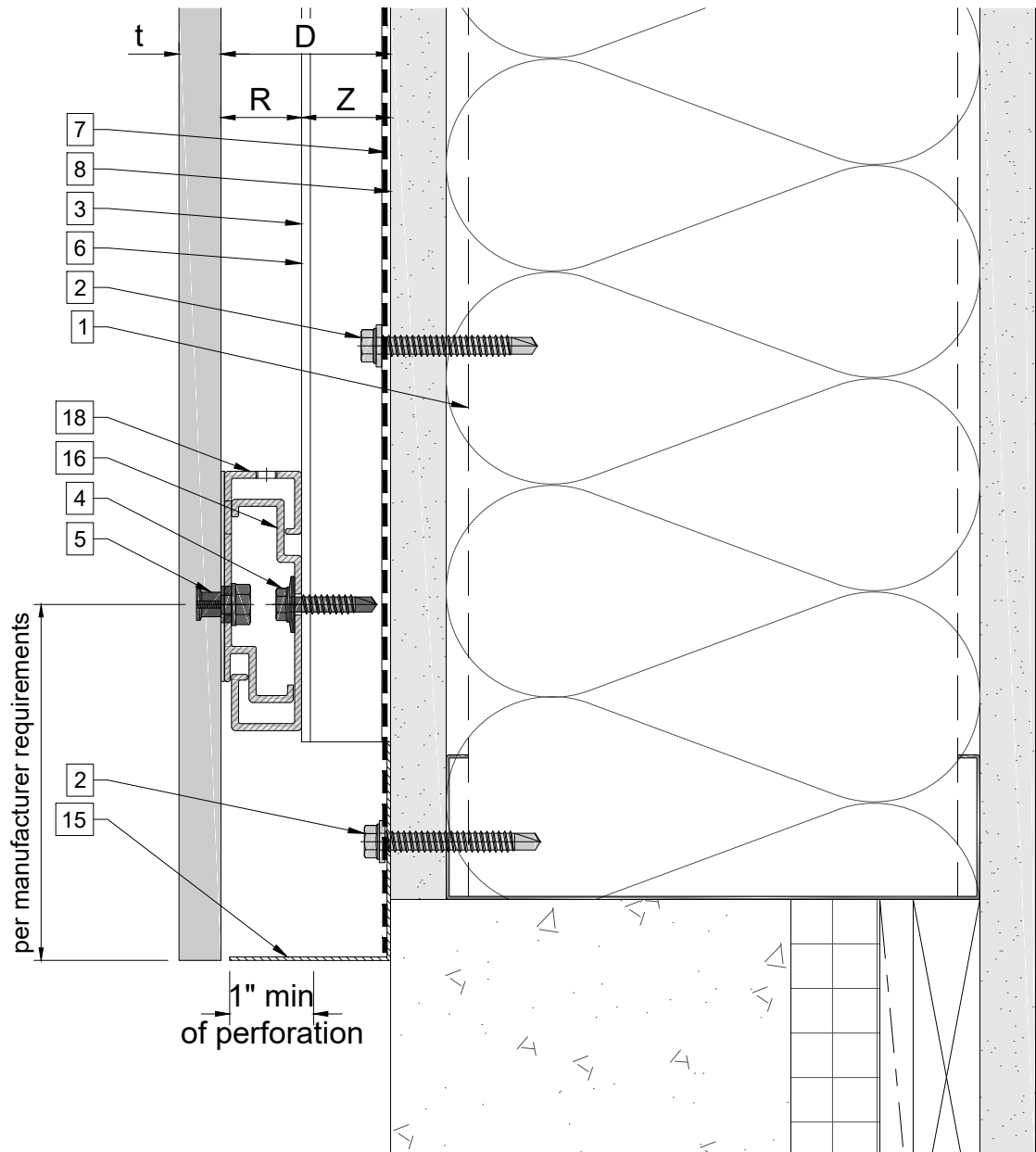
Legend			
1. Steel stud (16 GA typical)	12. Coping	D - System depth	* Ventilation will vary based on insulation depth.
2. Perimeter anchor	13. Perforated window head closure	t - Panel thickness	** Minimum ventilation requirement should be qualified by panel manufacturer.
3. Vertical 1" Z-profile	14. Window sill	R - C-carrier rail and C-hanger	*** One of adjustable C-hangers per panel to be fixed with fixing screw $\frac{3}{16}$ "x1"
4. st/st self-drilling screw $\frac{1}{4}$ "x1"	15. Perforated base closure	Z - Z-profile thickness	
5. Undercut anchor	16. C-carrier rail		
6. Panel	17. C-hanger, adjustable		
7. A/V barrier	18. C-hanger, non-adjustable		
8. Exterior wall	19. Leveling bolt M6		
9. Outer corner closure	20. Fixing screw $\frac{3}{16}$ "x1"		
10. Inner corner closure	21. Rivet		
11. Jamb closure			

# Coping detail



Legend			
1. Steel stud (16 GA typical)	12. Coping	D - System depth	* Ventilation will vary based on insulation depth.
2. Perimeter anchor	13. Perforated window head closure	t - Panel thickness	** Minimum ventilation requirement should be qualified by panel manufacturer.
3. Vertical 1" Z-profile	14. Window sill	R - C-carrier rail and C-hanger	*** One of adjustable C-hangers per panel to be fixed with fixing screw $\frac{3}{16}$ "x1"
4. st/st self-drilling screw $\frac{1}{4}$ "x1"	15. Perforated base closure	Z - Z-profile thickness	
5. Undercut anchor	16. C-carrier rail		
6. Panel	17. C-hanger, adjustable		
7. A/V barrier	18. C-hanger, non-adjustable		
8. Exterior wall	19. Leveling bolt M6		
9. Outer corner closure	20. Fixing screw $\frac{3}{16}$ "x1"		
10. Inner corner closure	21. Rivet		
11. Jamb closure			

# Base detail



Legend			
1. Steel stud (16 GA typical)	12. Coping	D - System depth	* Ventilation will vary based on insulation depth. ** Minimum ventilation requirement should be qualified by panel manufacturer. *** One of adjustable C-hangers per panel to be fixed with fixing screw $\frac{3}{16}$ "x1"
2. Perimeter anchor	13. Perforated window head closure	t - Panel thickness	
3. Vertical 1" Z-profile	14. Window sill	R - C-carrier rail and C-hanger	
4. st/st self-drilling screw $\frac{1}{4}$ "x1"	15. Perforated base closure	Z - Z-profile thickness	
5. Undercut anchor	16. C-carrier rail		
6. Panel	17. C-hanger, adjustable		
7. A/V barrier	18. C-hanger, non-adjustable		
8. Exterior wall	19. Leveling bolt M6		
9. Outer corner closure	20. Fixing screw $\frac{3}{16}$ "x1"		
10. Inner corner closure	21. Rivet		
11. Jamb closure			