
System depth

Bracket	min. D system depth	max. D system depth	R
Alpha V.035 / Alpha V+.035	3 ⁵ / ₁₆ " (84mm)	4 ⁷ / ₁₆ " (113mm)	1 ⁷ / ₁₆ " (26mm)
Alpha V.050 / Alpha V+.050	3 ⁹ / ₁₆ " (90mm)	5" (127mm)	1 ⁷ / ₁₆ " (26mm)
Alpha V.080 / Alpha V+.080	4 ³ / ₄ " (121mm)	6 ³ / ₁₆ " (157mm)	1 ⁷ / ₁₆ " (26mm)
Alpha V.100 / Alpha V+.100	5 ¹ / ₂ " (140mm)	7" (178mm)	1 ⁷ / ₁₆ " (26mm)
Alpha V.115 / Alpha V+.115	6 ¹ / ₈ " (156mm)	7 ⁹ / ₁₆ " (192mm)	1 ⁷ / ₁₆ " (26mm)
Alpha V.135 / Alpha V+.135	6 ⁷ / ₈ " (175mm)	8 ³ / ₈ " (213mm)	1 ⁷ / ₁₆ " (26mm)
Alpha V.150 / Alpha V+.150	7 ¹ / ₂ " (191mm)	8 ¹⁵ / ₁₆ " (227mm)	1 ⁷ / ₁₆ " (26mm)
Alpha V.170 / Alpha V+.170	8 ¹ / ₄ " (210mm)	9 ³ / ₄ " (248mm)	1 ⁷ / ₁₆ " (26mm)
Alpha V.185 / Alpha V+.185	8 ⁷ / ₈ " (225mm)	10 ⁵ / ₁₆ " (262mm)	1 ⁷ / ₁₆ " (26mm)
Alpha V.200 / Alpha V+.200	9 ⁷ / ₁₆ " (240mm)	10 ¹⁵ / ₁₆ " (278mm)	1 ⁷ / ₁₆ " (26mm)
Alpha V.220 / Alpha V+.220	10 ¹ / ₄ " (260mm)	11 ¹¹ / ₁₆ " (297mm)	1 ⁷ / ₁₆ " (26mm)
Alpha V.255 / Alpha V+.255	11 ⁵ / ₈ " (295mm)	1'-1 ¹ / ₁₆ " (332mm)	1 ⁷ / ₁₆ " (26mm)

Legend

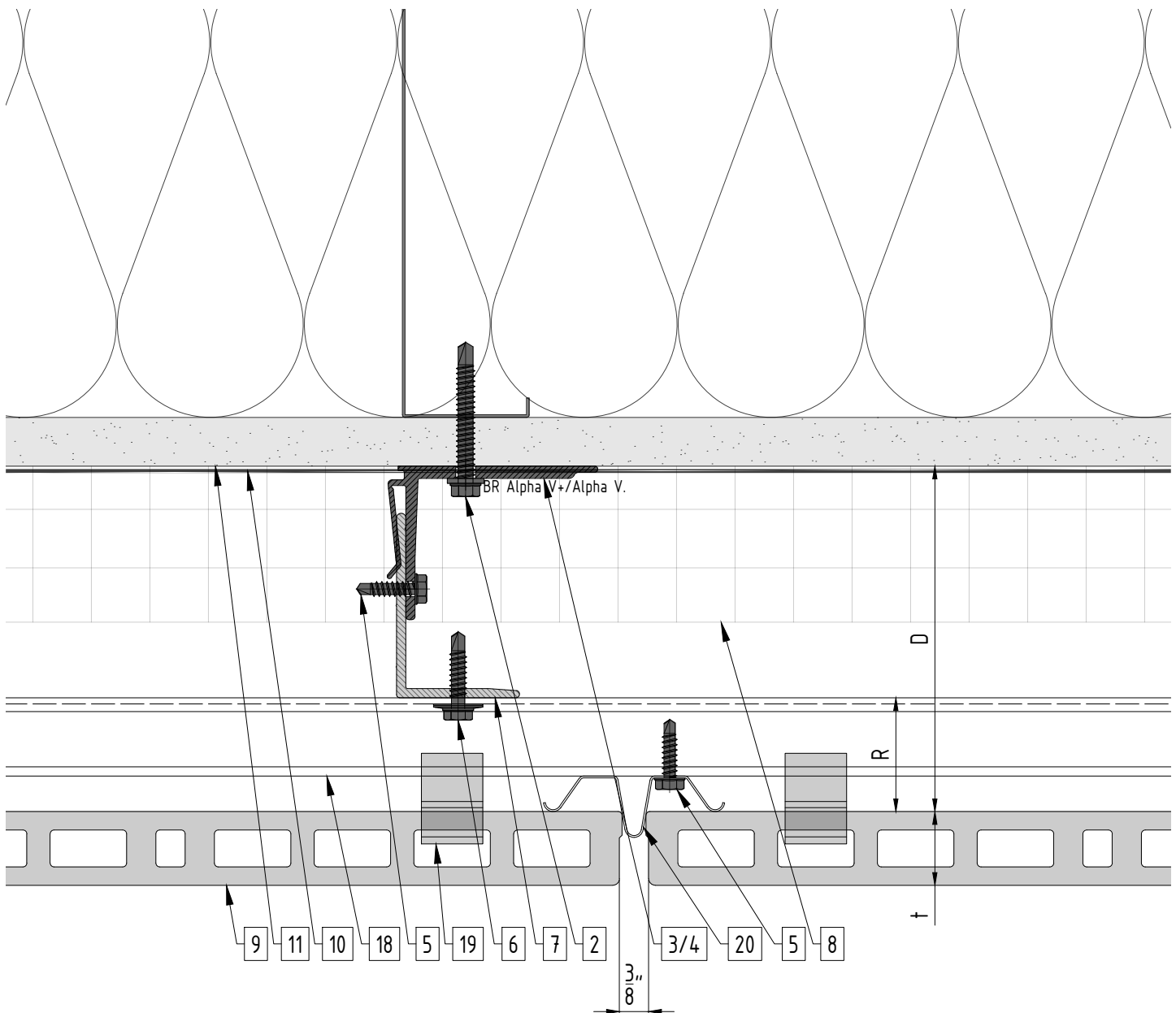
1. Steel stud (16 GA typical)
2. Perimeter anchor
3. Alpha V wall bracket
4. Alpha V+ wall bracket
5. St/st self-drilling screw $\frac{3}{16}" \times \frac{3}{4}"$
6. St/st self-drilling screw #14x1
7. Vertical L-profile
8. Insulation
9. Terracotta tile

10. A/V barrier
11. Exterior wall
12. Outer corner closure
13. Jamb closure
14. Coping
15. Perforated window head closure (Not by CladdingCorp)
16. Window sill

17. Perforated base closure (Not by CladdingCorp)
18. Carrier rail
19. Clip
20. Vertical joint closure
21. Spring profile
22. Rivet

D - System depth
t - Panel thickness
R - Carrier rail

* Ventilation will vary based on insulation depth.



Legend

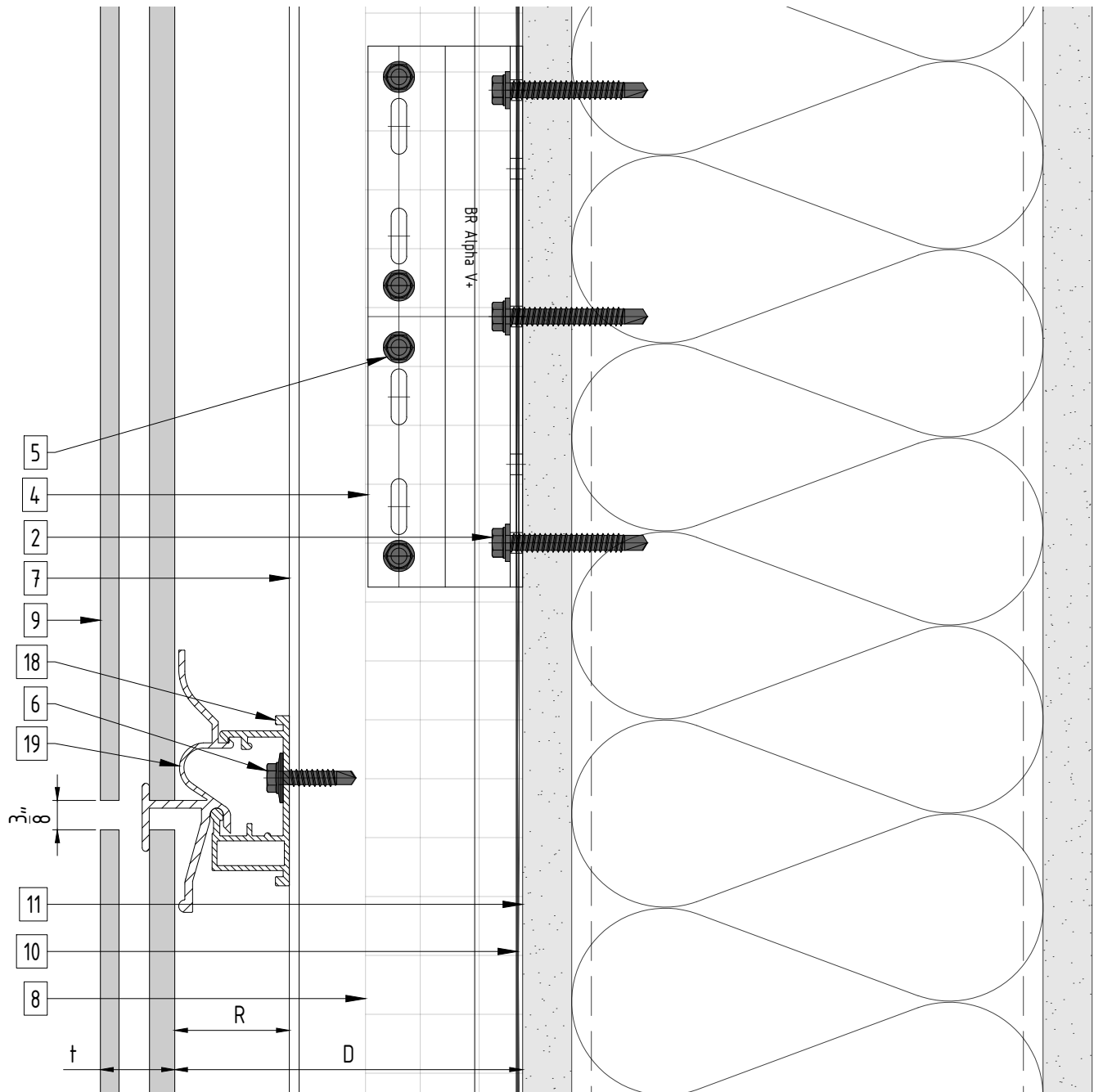
1. Steel stud (16 GA typical)
2. Perimeter anchor
3. Alpha V wall bracket
4. Alpha V+ wall bracket
5. St/st self-drilling screw $\frac{3}{16} \times \frac{3}{4}$
6. St/st self-drilling screw #14x1
7. Vertical L-profile
8. Insulation
9. Terracotta tile

10. A/V barrier
11. Exterior wall
12. Outer corner closure
13. Jamb closure
14. Coping
15. Perforated window head closure (Not by CladdingCorp)
16. Window sill

17. Perforated base closure (Not by CladdingCorp)
18. Carrier rail
19. Clip
20. Vertical joint closure
21. Spring profile
22. Rivet

D - System depth
t - Panel thickness
R - Carrier rail

* Ventilation will vary based on insulation depth.



Legend

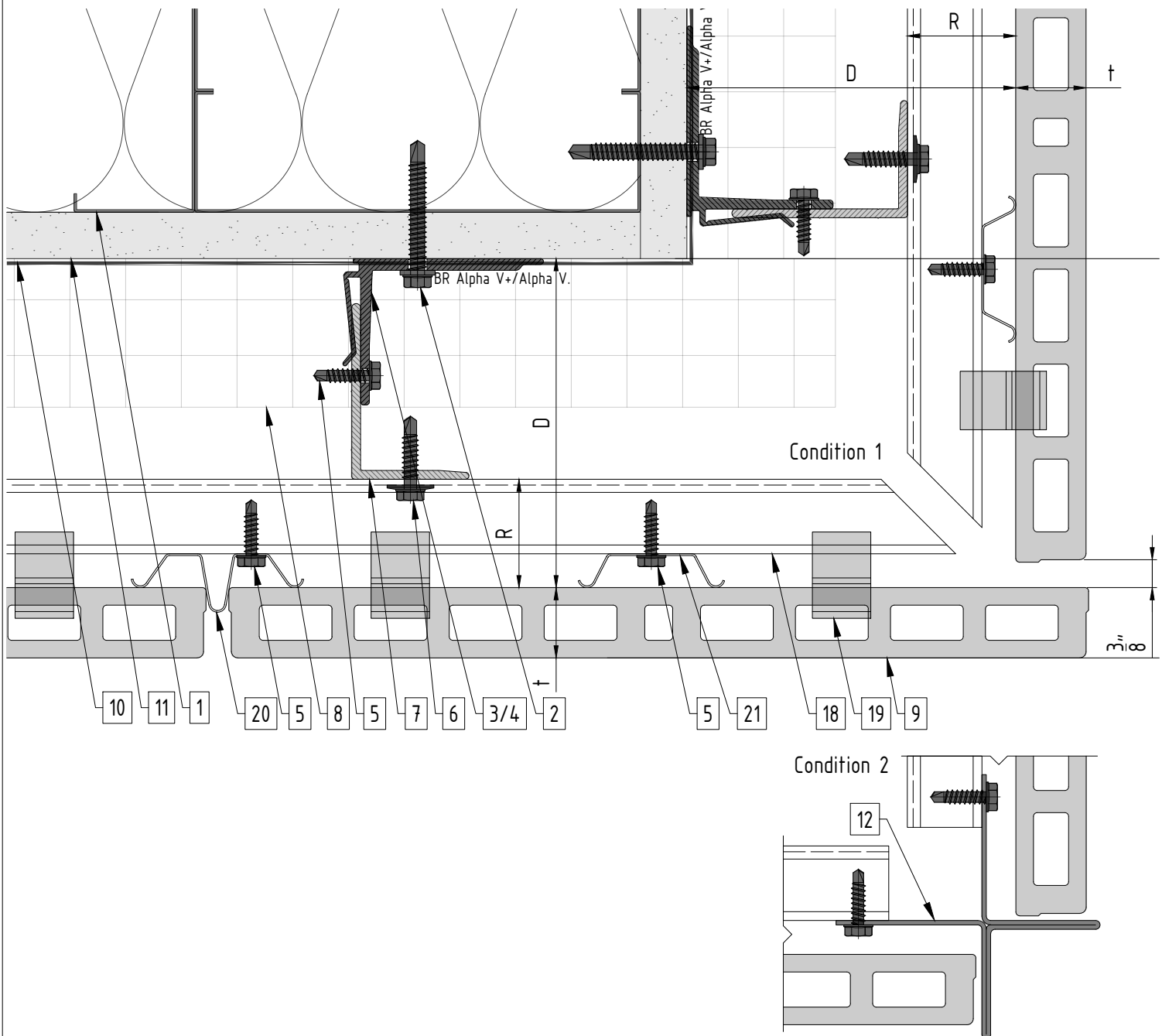
1. Steel stud (16 GA typical)
2. Perimeter anchor
3. Alpha V wall bracket
4. Alpha V+ wall bracket
5. St/st self-drilling screw $\frac{3}{16}'' \times \frac{3}{4}''$
6. St/st self-drilling screw #14x1
7. Vertical L-profile
8. Insulation
9. Terracotta tile

10. A/V barrier
11. Exterior wall
12. Outer corner closure
13. Jamb closure
14. Coping
15. Perforated window head closure (Not by CladdingCorp)
16. Window sill

17. Perforated base closure (Not by CladdingCorp)
18. Carrier rail
19. Clip
20. Vertical joint closure
21. Spring profile
22. Rivet

D - System depth
t - Panel thickness
R - Carrier rail

* Ventilation will vary based on insulation depth.



Legend

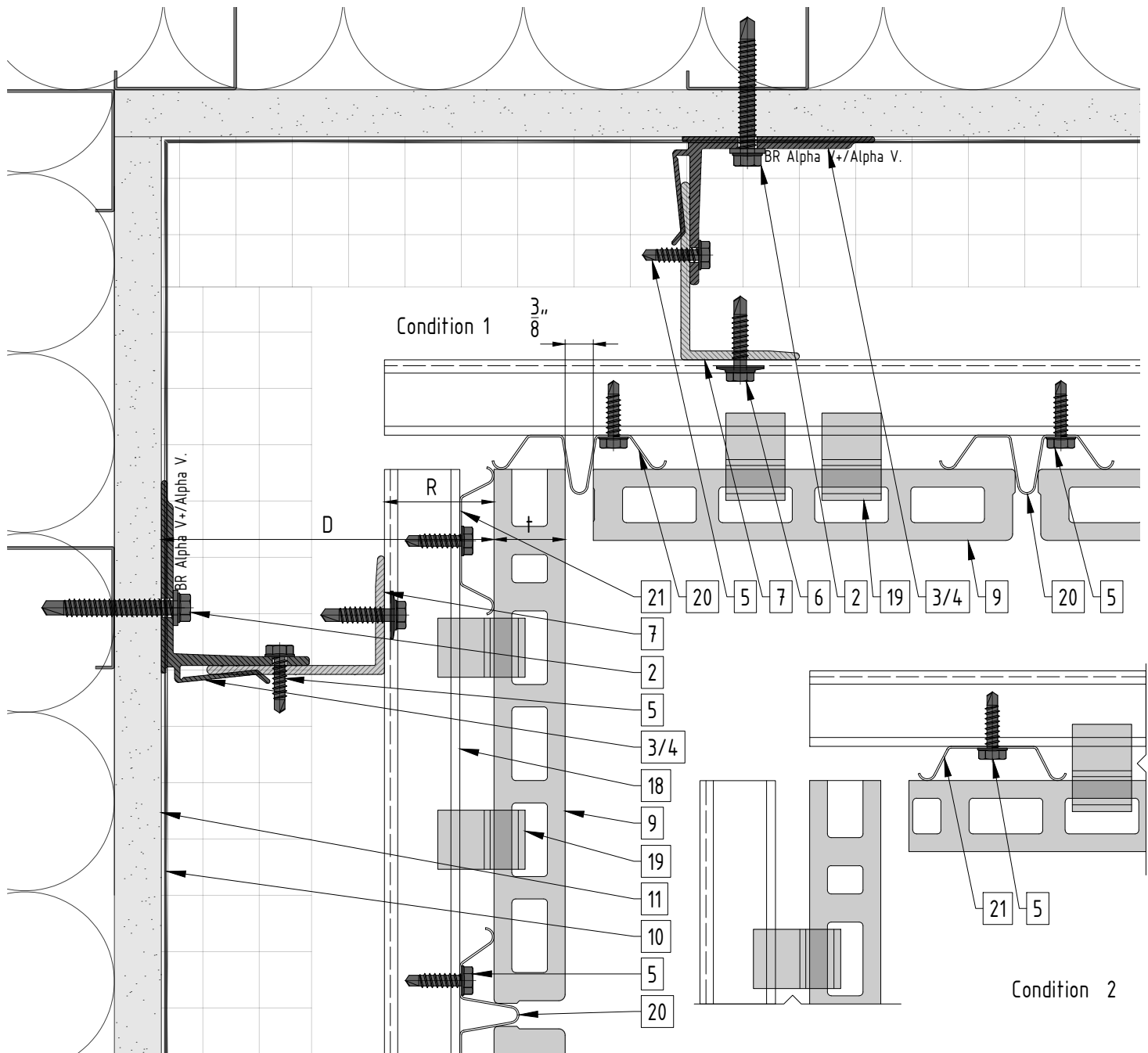
1. Steel stud (16 GA typical)
2. Perimeter anchor
3. Alpha V wall bracket
4. Alpha V+ wall bracket
5. St/st self-drilling screw $\frac{3}{16} \times \frac{3}{4}$
6. St/st self-drilling screw #14x1
7. Vertical L-profile
8. Insulation
9. Terracotta tile

10. A/V barrier
11. Exterior wall
12. Outer corner closure
13. Jamb closure
14. Coping
15. Perforated window head closure (Not by CladdingCorp)
16. Window sill

17. Perforated base closure (Not by CladdingCorp)
18. Carrier rail
19. Clip
20. Vertical joint closure
21. Spring profile
22. Rivet

D - System depth
t - Panel thickness
R - Carrier rail

* Ventilation will vary based on insulation depth.



Legend

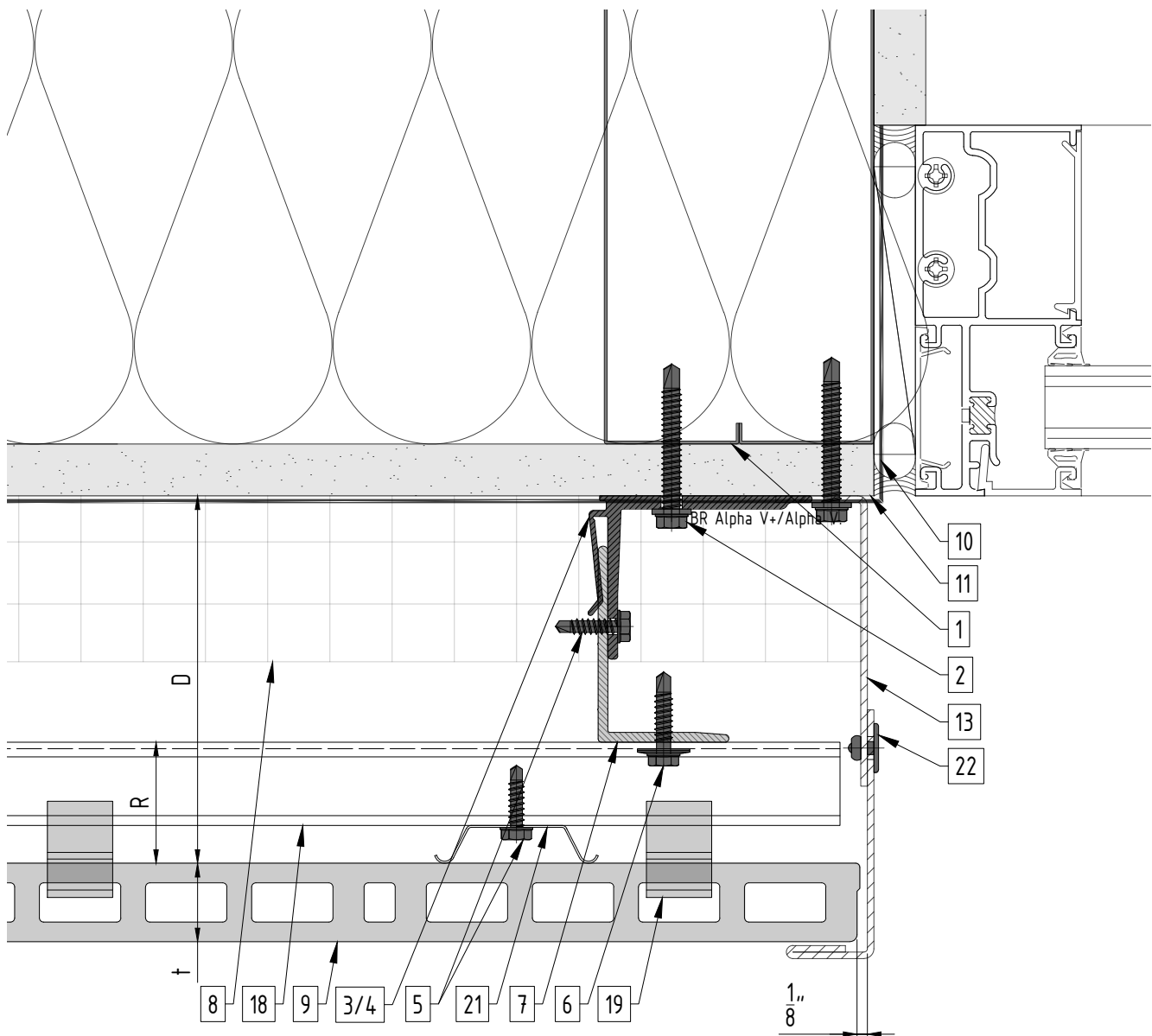
1. Steel stud (16 GA typical)
2. Perimeter anchor
3. Alpha V wall bracket
4. Alpha V+ wall bracket
5. St/st self-drilling screw $\frac{3}{16} \times \frac{3}{4}$
6. St/st self-drilling screw #14x1
7. Vertical L-profile
8. Insulation
9. Terracotta tile

10. A/V barrier
11. Exterior wall
12. Outer corner closure
13. Jamb closure
14. Coping
15. Perforated window head closure (Not by CladdingCorp)
16. Window sill

17. Perforated base closure (Not by CladdingCorp)
18. Carrier rail
19. Clip
20. Vertical joint closure
21. Spring profile
22. Rivet

D - System depth
t - Panel thickness
R - Carrier rail

* Ventilation will vary based on insulation depth.



Legend

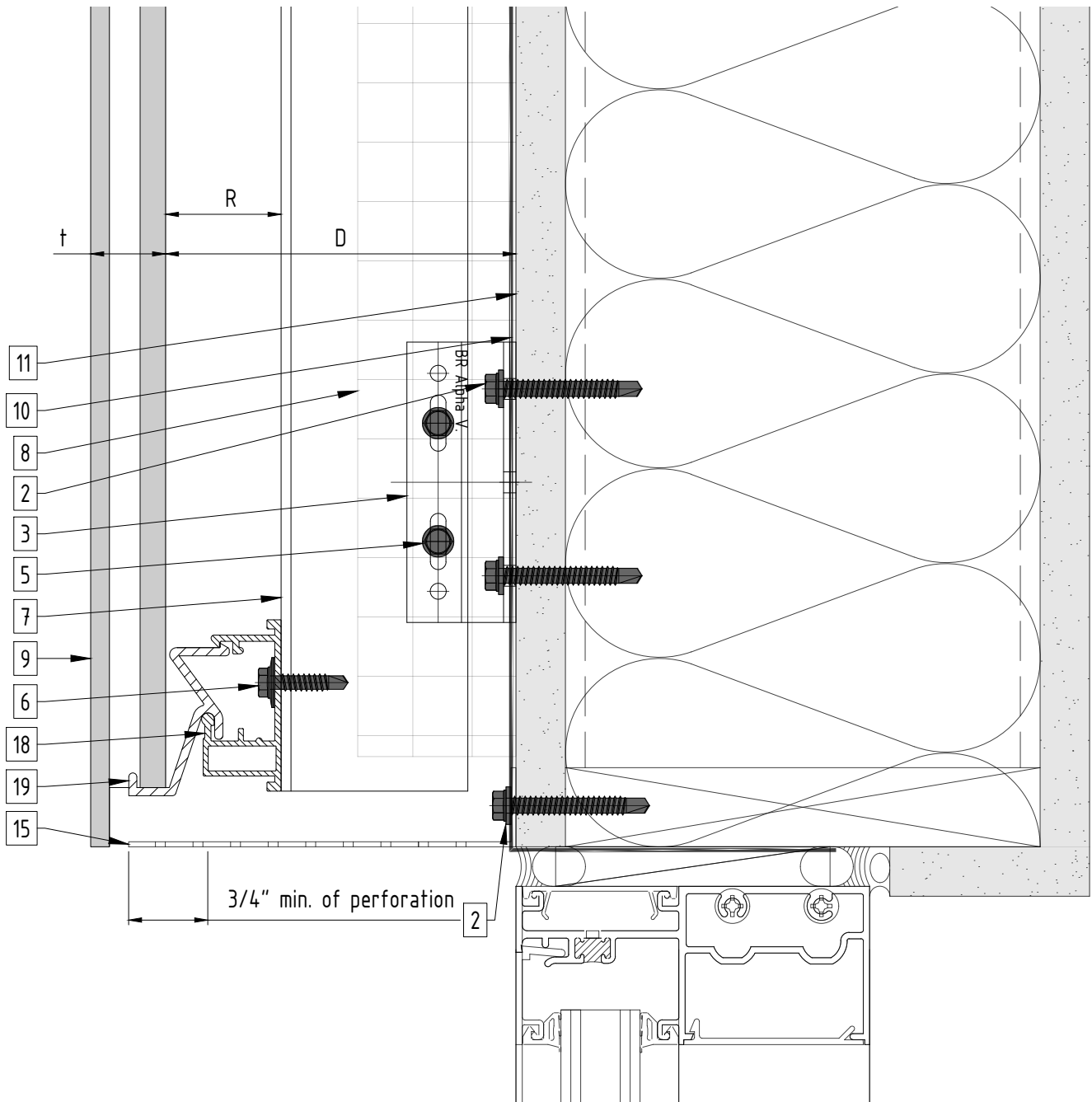
1. Steel stud (16 GA typical)
2. Perimeter anchor
3. Alpha V wall bracket
4. Alpha V+ wall bracket
5. St/st self-drilling screw $\frac{3}{16}" \times \frac{3}{4}"$
6. St/st self-drilling screw #14x1
7. Vertical L-profile
8. Insulation
9. Terracotta tile

10. A/V barrier
11. Exterior wall
12. Outer corner closure
13. Jamb closure
14. Coping
15. Perforated window head closure
(Not by CladdingCorp)
16. Window sill

17. Perforated base closure
(Not by CladdingCorp)
18. Carrier rail
19. Clip
20. Vertical joint closure
21. Spring profile
22. Rivet

- D - System depth
t - Panel thickness
R - Carrier rail

* Ventilation will vary based on insulation depth.



Legend

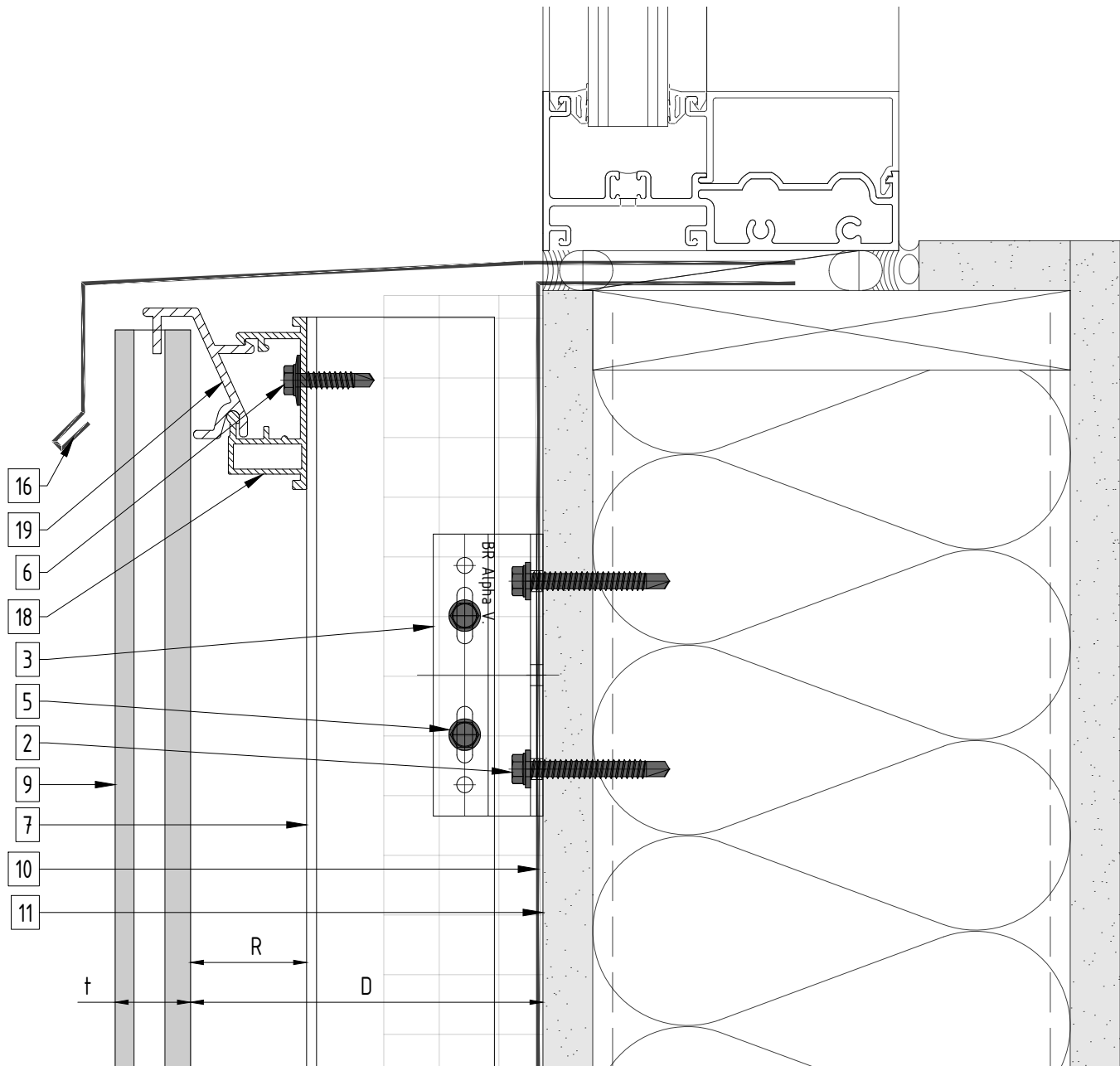
1. Steel stud (16 GA typical)
2. Perimeter anchor
3. Alpha V wall bracket
4. Alpha V+ wall bracket
5. St/st self-drilling screw $\frac{3}{16} \times \frac{3}{4}$ "
6. St/st self-drilling screw #14x1
7. Vertical L-profile
8. Insulation
9. Terracotta tile

10. A/V barrier
11. Exterior wall
12. Outer corner closure
13. Jamb closure
14. Coping
15. Perforated window head closure (Not by CladdingCorp)
16. Window sill

17. Perforated base closure (Not by CladdingCorp)
18. Carrier rail
19. Clip
20. Vertical joint closure
21. Spring profile
22. Rivet

D - System depth
t - Panel thickness
R - Carrier rail

* Ventilation will vary based on insulation depth.



Legend

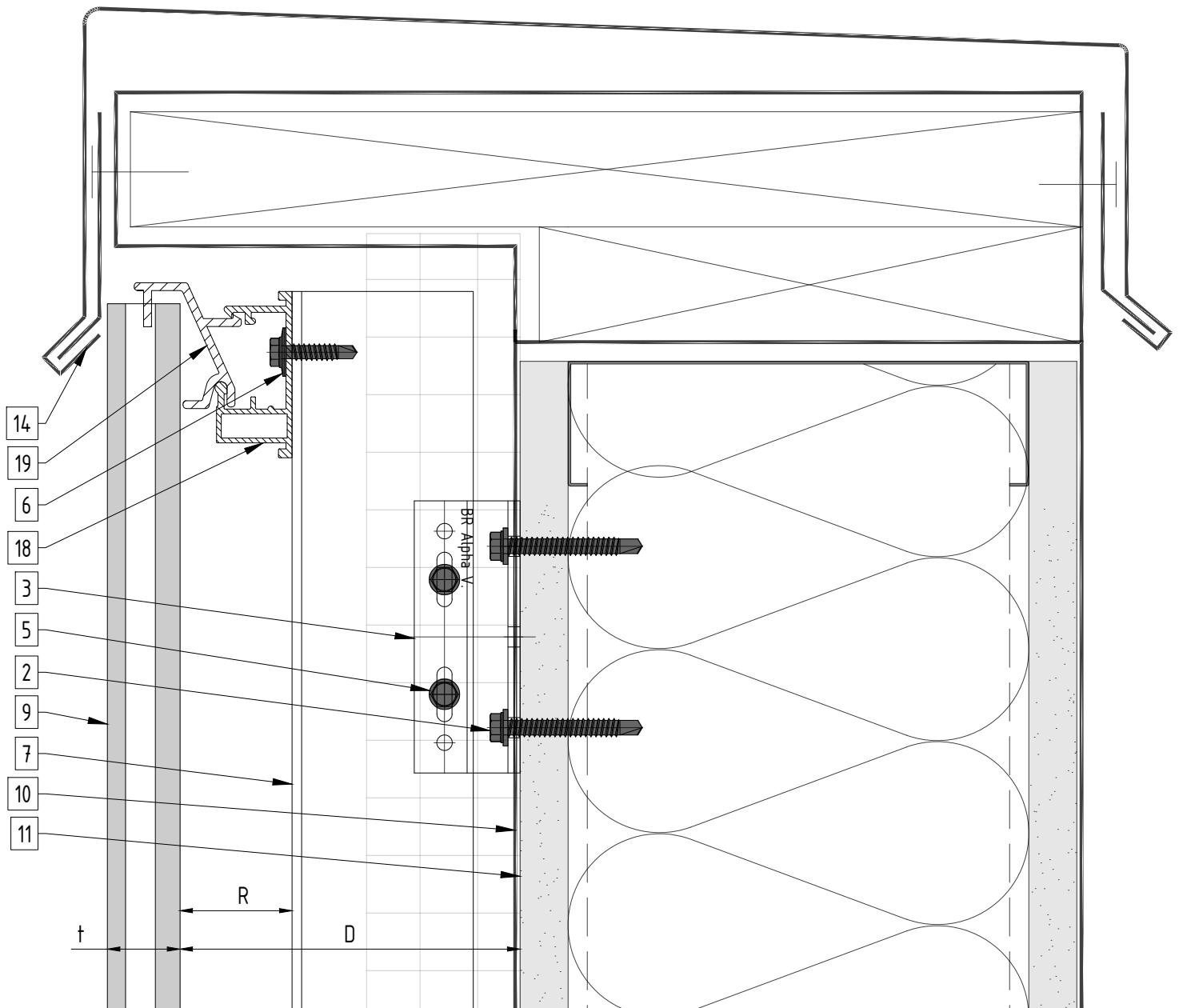
1. Steel stud (16 GA typical)
2. Perimeter anchor
3. Alpha V wall bracket
4. Alpha V+ wall bracket
5. St/st self-drilling screw $\frac{3}{16}'' \times \frac{3}{4}''$
6. St/st self-drilling screw #14x1
7. Vertical L-profile
8. Insulation
9. Terracotta tile

10. A/V barrier
11. Exterior wall
12. Outer corner closure
13. Jamb closure
14. Coping
15. Perforated window head closure (Not by CladdingCorp)
16. Window sill

17. Perforated base closure (Not by CladdingCorp)
18. Carrier rail
19. Clip
20. Vertical joint closure
21. Spring profile
22. Rivet

D - System depth
t - Panel thickness
R - Carrier rail

* Ventilation will vary based on insulation depth.



Legend

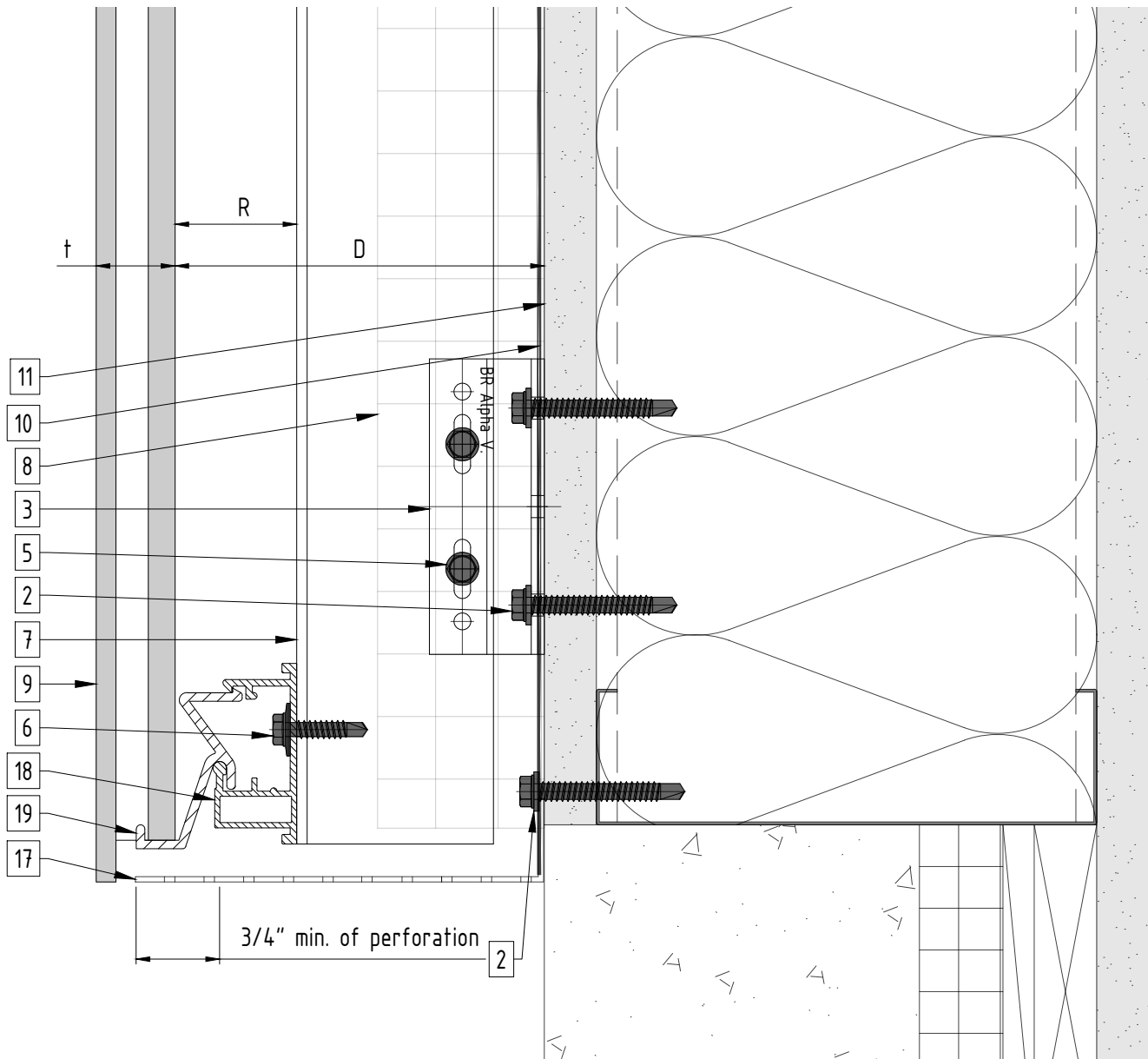
1. Steel stud (16 GA typical)
2. Perimeter anchor
3. Alpha V wall bracket
4. Alpha V+ wall bracket
5. St/st self-drilling screw $\frac{3}{16} \times \frac{3}{4}$ "
6. St/st self-drilling screw #14x1
7. Vertical L-profile
8. Insulation
9. Terracotta tile

10. A/V barrier
11. Exterior wall
12. Outer corner closure
13. Jamb closure
14. Coping
15. Perforated window head closure (Not by CladdingCorp)
16. Window sill

17. Perforated base closure (Not by CladdingCorp)
18. Carrier rail
19. Clip
20. Vertical joint closure
21. Spring profile
22. Rivet

D - System depth
t - Panel thickness
R - Carrier rail

* Ventilation will vary based on insulation depth.



Legend

1. Steel stud (16 GA typical)
2. Perimeter anchor
3. Alpha V wall bracket
4. Alpha V+ wall bracket
5. St/st self-drilling screw $\frac{3}{16} \times \frac{3}{4}$ "
6. St/st self-drilling screw #14x1
7. Vertical L-profile
8. Insulation
9. Terracotta tile

10. A/V barrier
11. Exterior wall
12. Outer corner closure
13. Jamb closure
14. Coping
15. Perforated window head closure (Not by CladdingCorp)
16. Window sill

17. Perforated base closure (Not by CladdingCorp)
18. Carrier rail
19. Clip
20. Vertical joint closure
21. Spring profile
22. Rivet

D - System depth
t - Panel thickness
R - Carrier rail

* Ventilation will vary based on insulation depth.