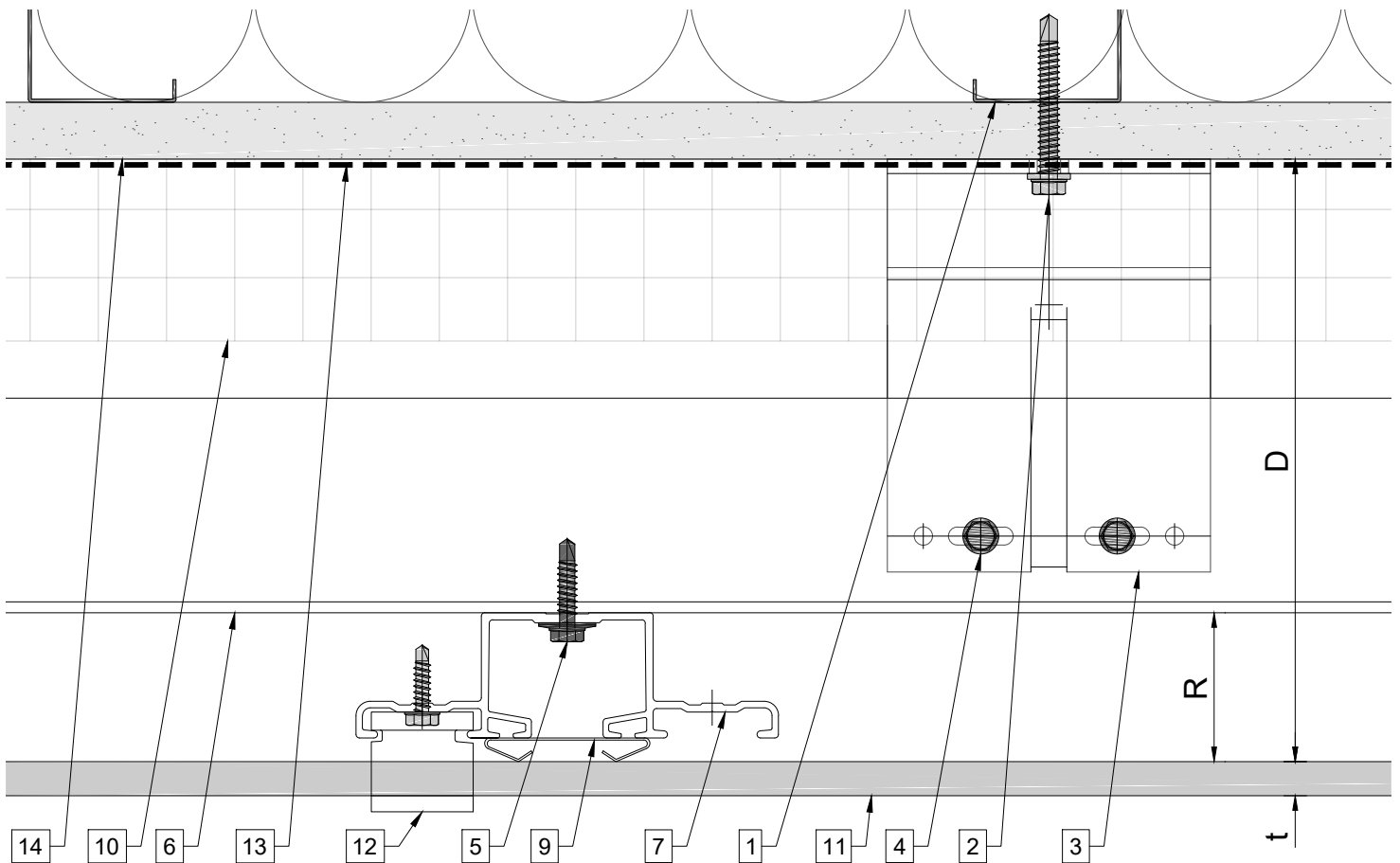


System depth



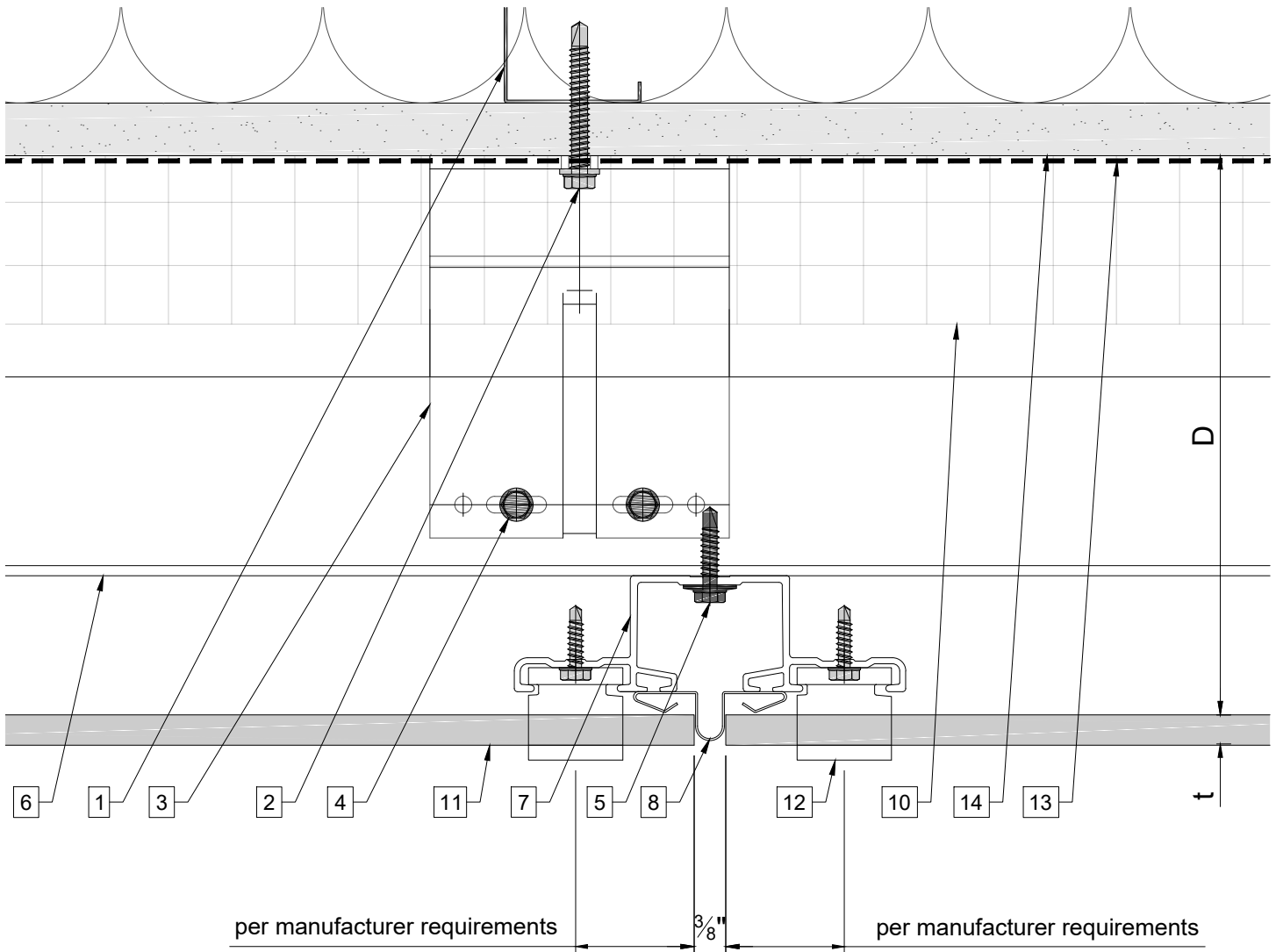
System depth

Bracket	min. D system depth	max. D system depth	R	t panel thickness
Alpha H 035	3 $\frac{3}{8}$ " (86mm)	4 $\frac{9}{16}$ " (117mm)	1 $\frac{5}{8}$ " (42mm)	varies
Alpha H 050	3 $\frac{3}{4}$ " (95mm)	5 $\frac{3}{16}$ " (132mm)	1 $\frac{5}{8}$ " (42mm)	varies
Alpha H 080	4 $\frac{7}{8}$ " (125mm)	6 $\frac{3}{8}$ " (162mm)	1 $\frac{5}{8}$ " (42mm)	varies
Alpha H 115	6 $\frac{5}{16}$ " (160mm)	7 $\frac{3}{4}$ " (197mm)	1 $\frac{5}{8}$ " (42mm)	varies
Alpha H 150	7 $\frac{11}{16}$ " (195mm)	9 $\frac{1}{8}$ " (232mm)	1 $\frac{5}{8}$ " (42mm)	varies
Alpha H 185	9 $\frac{1}{16}$ " (230mm)	10 $\frac{1}{2}$ " (267mm)	1 $\frac{5}{8}$ " (42mm)	varies
Alpha H 220	10 $\frac{7}{16}$ " (265mm)	11 $\frac{7}{8}$ " (302mm)	1 $\frac{5}{8}$ " (42mm)	varies
Alpha H 235	11" (280mm)	12 $\frac{7}{16}$ " (317mm)	1 $\frac{5}{8}$ " (42mm)	varies

Legend

- | | | |
|---|--|--|
| <ul style="list-style-type: none"> 1. Steel stud (16 GA typical) 2. Perimeter anchor 3. Alpha H wall bracket 4. st/st self-drilling screw $\frac{3}{16}$"x$\frac{3}{4}$" 5. st/st self-drilling screw $\frac{1}{4}$"x1" 6. Horizontal L-profile 7. Vertical Omega-profile 8. Joint profile | <ul style="list-style-type: none"> 9. Press Profile / Piece 10. Insulation 11. Tile 12. Tile Clamp 13. A/V barrier 14. Exterior wall 15. Outer corner closure 16. Jamb closure | <ul style="list-style-type: none"> 17. Vertical L-profile 18. Coping 19. Perforated window head closure 20. Window sill 21. Perforated base closure <p>D - System depth
t - Panel thickness</p> |
|---|--|--|

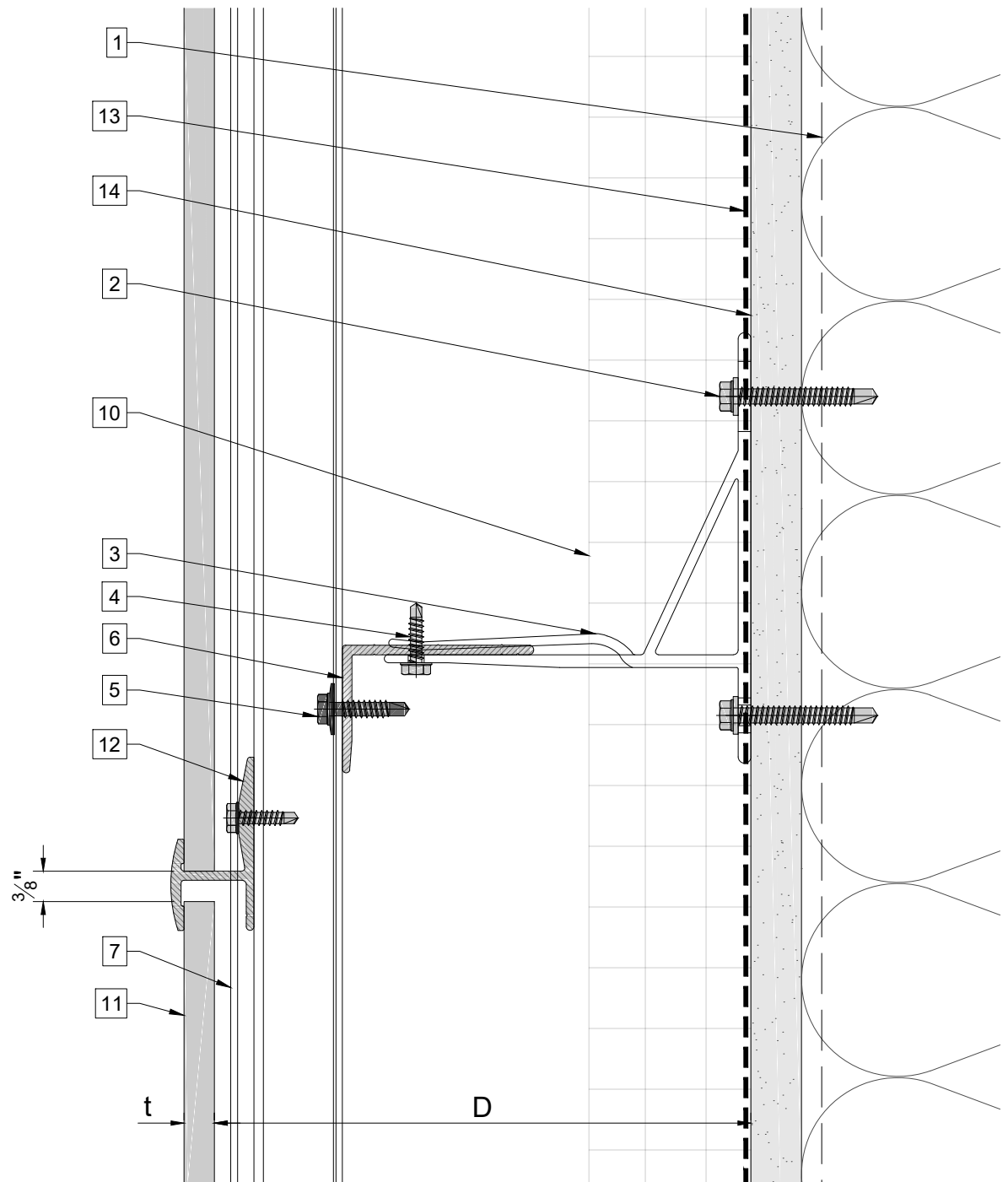
Vertical joint



Legend

- | | | |
|--|--------------------------|------------------------------------|
| 1. Steel stud (16 GA typical) | 9. Press Profile / Piece | 17. Vertical L-profile |
| 2. Perimeter anchor | 10. Insulation | 18. Coping |
| 3. Alpha H wall bracket | 11. Tile | 19. Perforated window head closure |
| 4. st/st self-drilling screw $\frac{3}{16}'' \times \frac{3}{4}''$ | 12. Tile Clamp | 20. Window sill |
| 5. st/st self-drilling screw $\frac{1}{4}'' \times 1''$ | 13. A/V barrier | 21. Perforated base closure |
| 6. Horizontal L-profile | 14. Exterior wall | |
| 7. Vertical Omega-profile | 15. Outer corner closure | |
| 8. Joint profile | 16. Jamb closure | |
| | | D - System depth |
| | | t - Panel thickness |

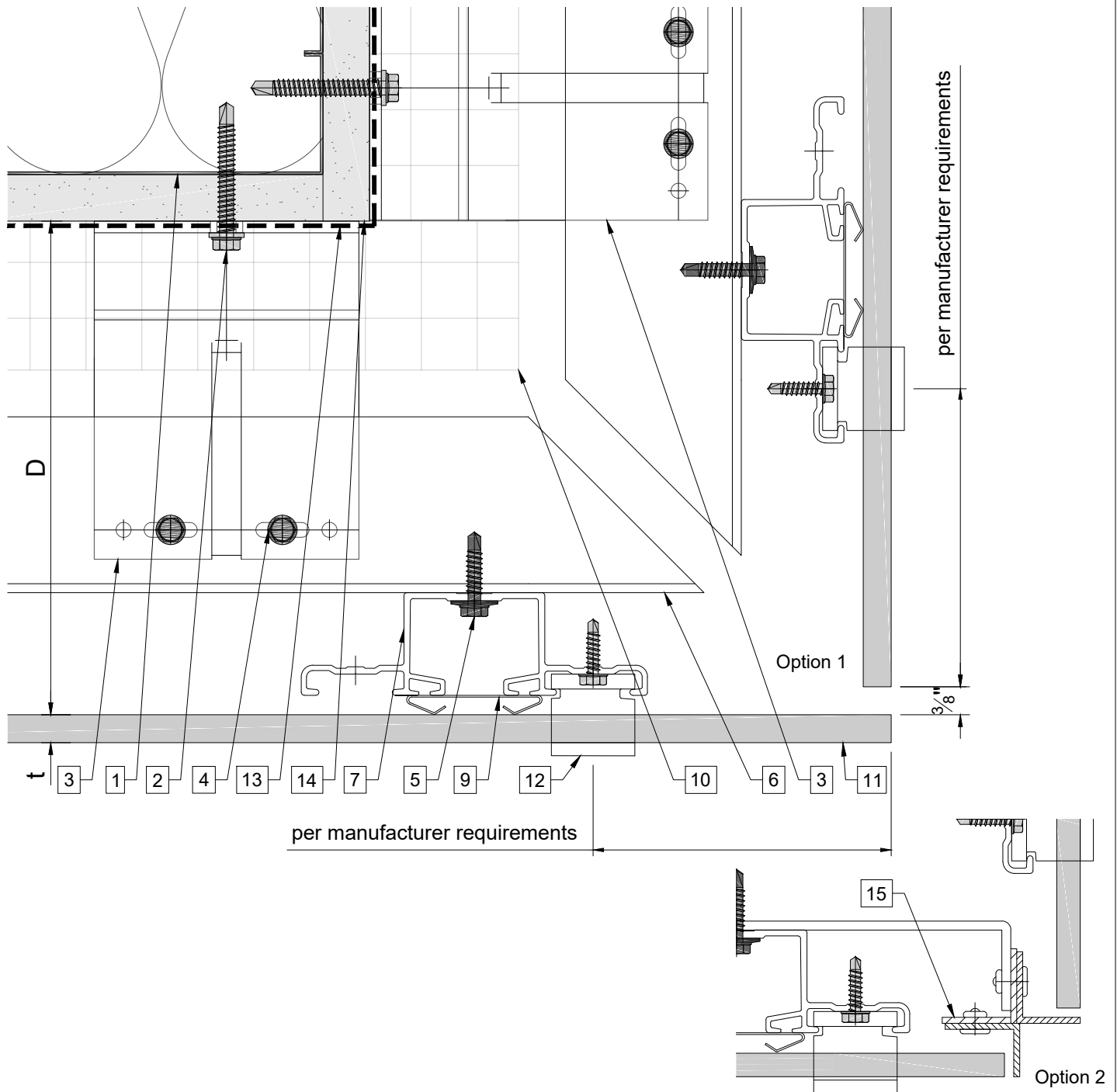
Horizontal joint



Legend

1. Steel stud (16 GA typical)	9. Press Profile / Piece	17. Vertical L-profile
2. Perimeter anchor	10. Insulation	18. Coping
3. Alpha H wall bracket	11. Tile	19. Perforated window head closure
4. st/st self-drilling screw $\frac{3}{16}" \times \frac{3}{4}"$	12. Tile Clamp	20. Window sill
5. st/st self-drilling screw $\frac{1}{4}" \times 1"$	13. A/V barrier	21. Perforated base closure
6. Horizontal L-profile	14. Exterior wall	
7. Vertical Omega-profile	15. Outer corner closure	
8. Joint profile	16. Jamb closure	
		D - System depth t - Panel thickness

Outer corner

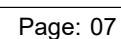


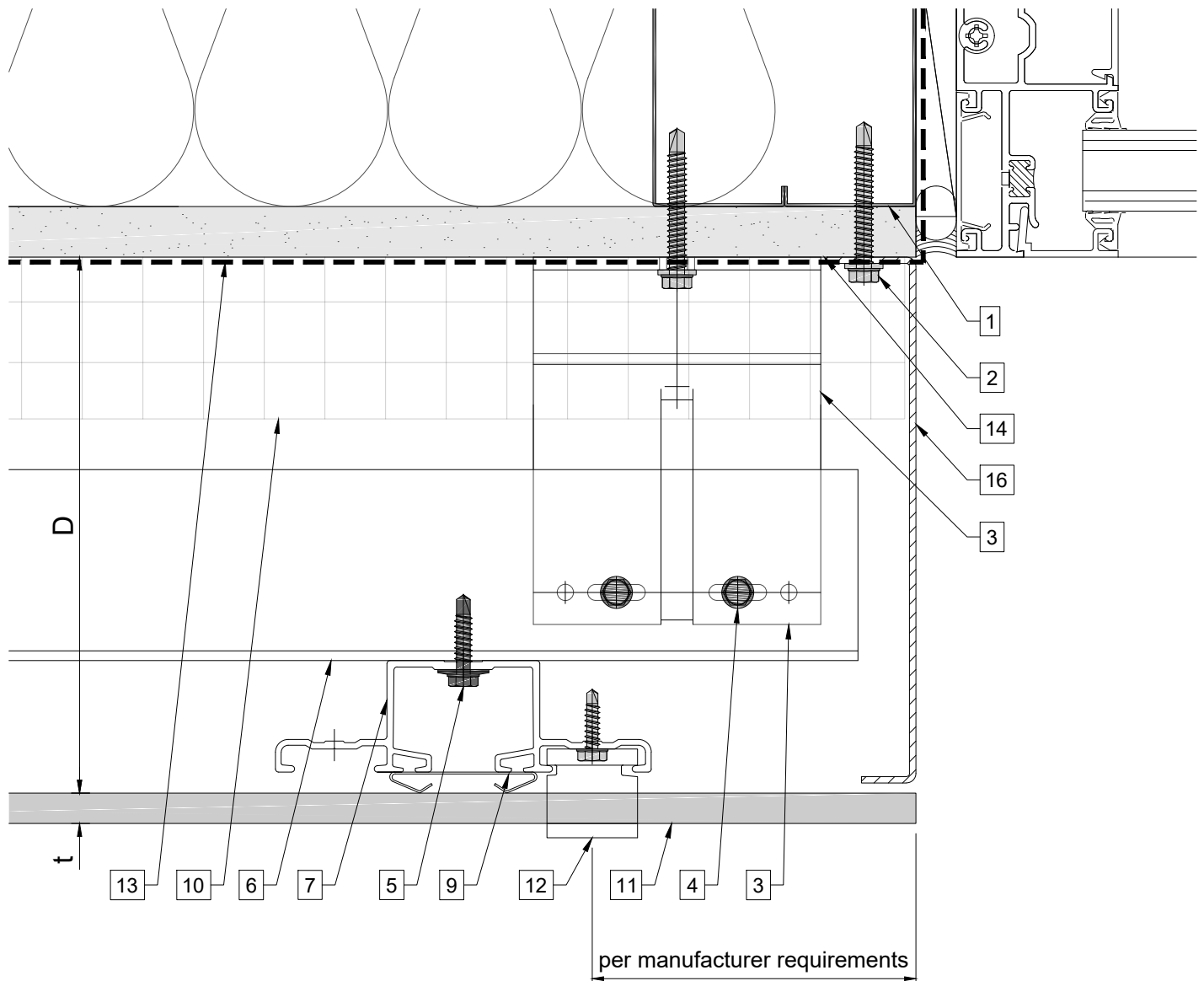
Legend

- | | | |
|--|--------------------------|---|
| 1. Steel stud (16 GA typical) | 9. Press Profile / Piece | 17. Vertical L-profile |
| 2. Perimeter anchor | 10. Insulation | 18. Coping |
| 3. Alpha H wall bracket | 11. Tile | 19. Perforated window head closure |
| 4. st/st self-drilling screw $\frac{3}{16}" \times \frac{3}{4}"$ | 12. Tile Clamp | 20. Window sill |
| 5. st/st self-drilling screw $\frac{1}{4}" \times 1"$ | 13. A/V barrier | 21. Perforated base closure |
| 6. Horizontal L-profile | 14. Exterior wall | |
| 7. Vertical Omega-profile | 15. Outer corner closure | |
| 8. Joint profile | 16. Jamb closure | |
| | | D - System depth
t - Panel thickness |



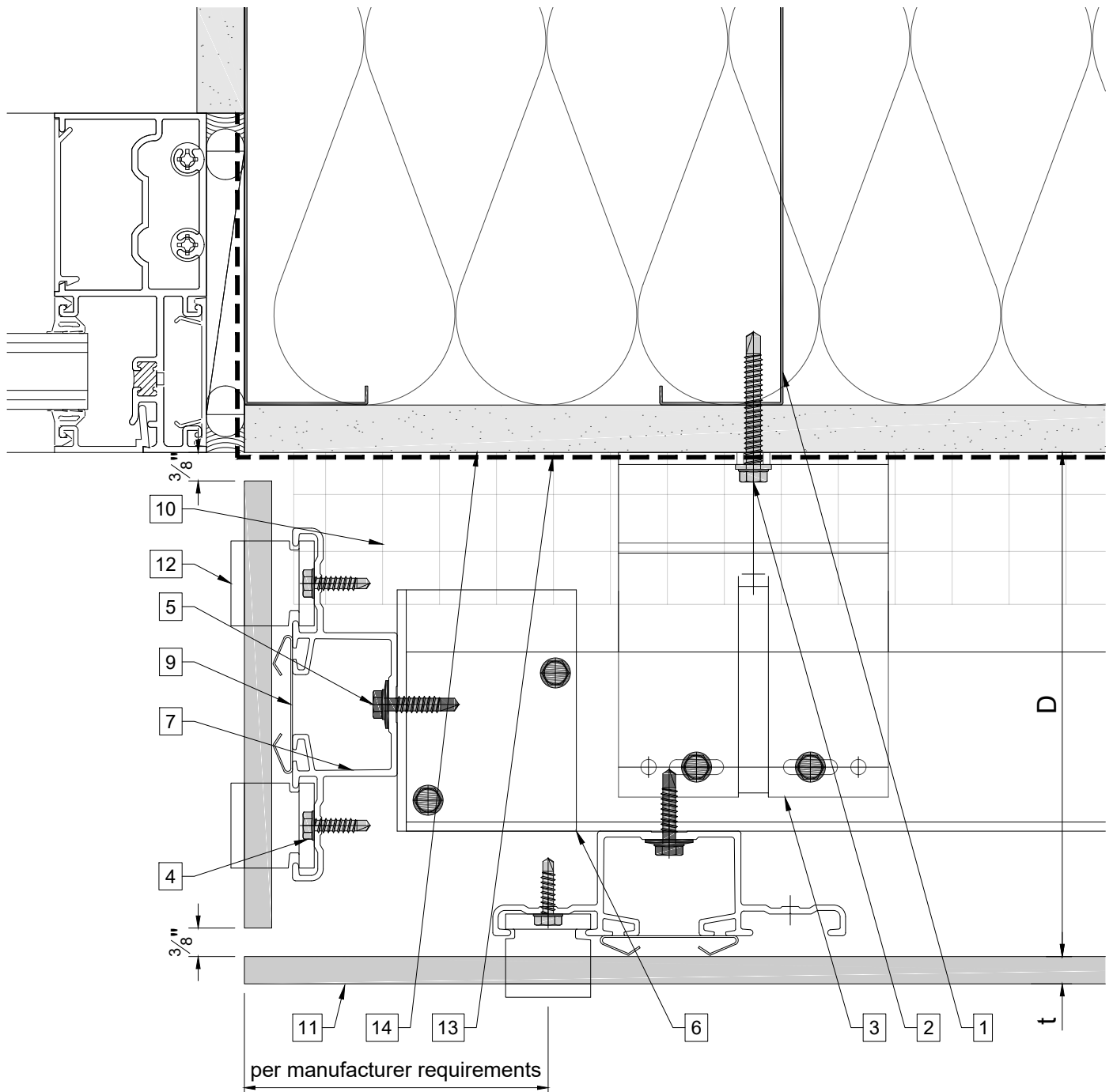
ECO CLADDING





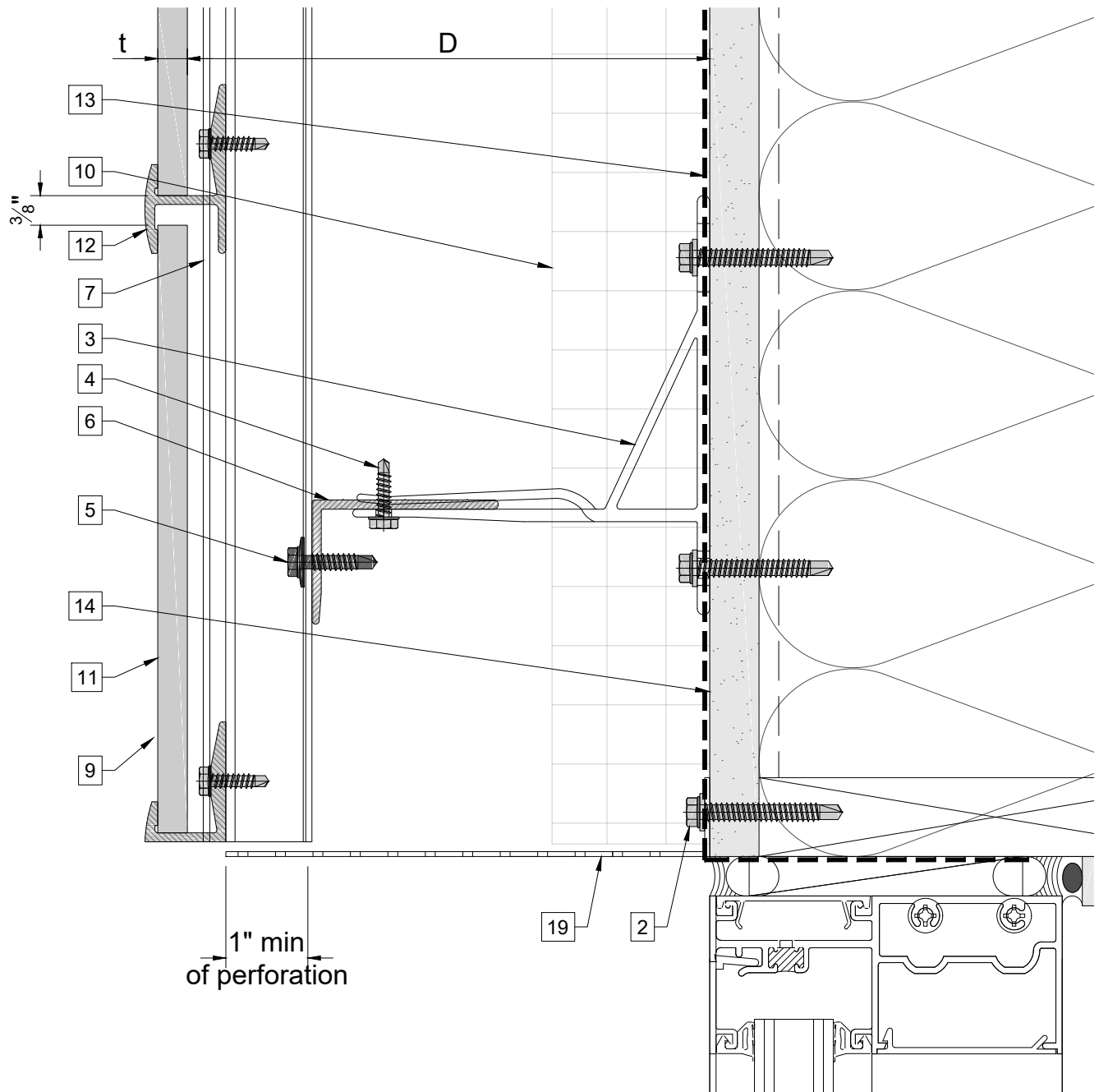
Legend

- | | | |
|--|--------------------------|---|
| 1. Steel stud (16 GA typical) | 9. Press Profile / Piece | 17. Vertical L-profile |
| 2. Perimeter anchor | 10. Insulation | 18. Coping |
| 3. Alpha H wall bracket | 11. Tile | 19. Perforated window head closure |
| 4. st/st self-drilling screw $\frac{3}{16}$ "x $\frac{3}{4}$ " | 12. Tile Clamp | 20. Window sill |
| 5. st/st self-drilling screw $\frac{1}{4}$ "x1" | 13. A/V barrier | 21. Perforated base closure |
| 6. Horizontal L-profile | 14. Exterior wall | |
| 7. Vertical Omega-profile | 15. Outer corner closure | |
| 8. Joint profile | 16. Jamb closure | |
| | | D - System depth
t - Panel thickness |



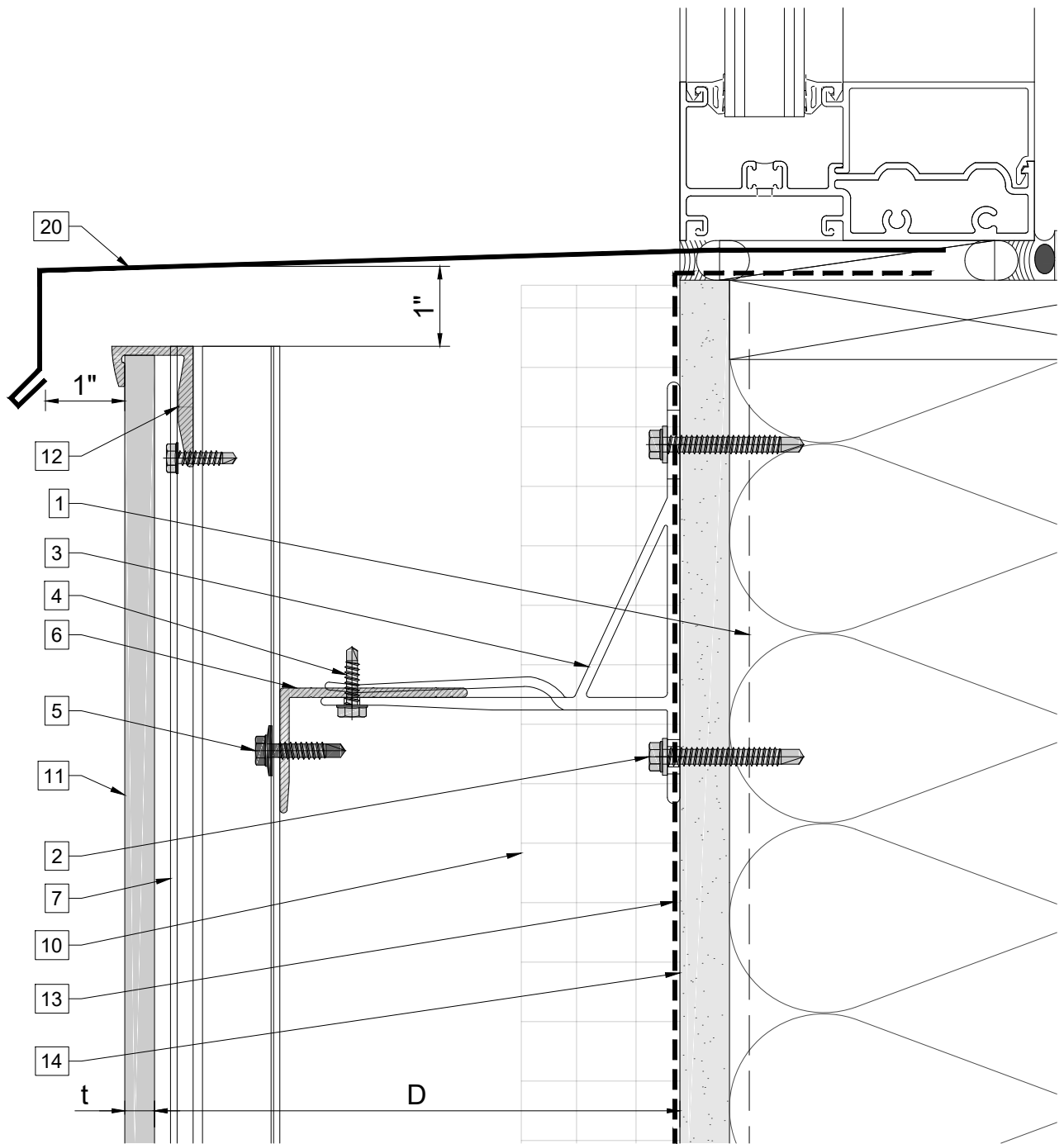
Legend

- | | | |
|--|--------------------------|------------------------------------|
| 1. Steel stud (16 GA typical) | 9. Press Profile / Piece | 17. Vertical L-profile |
| 2. Perimeter anchor | 10. Insulation | 18. Coping |
| 3. Alpha H wall bracket | 11. Tile | 19. Perforated window head closure |
| 4. st/st self-drilling screw $\frac{3}{16}" \times \frac{3}{4}"$ | 12. Tile Clamp | 20. Window sill |
| 5. st/st self-drilling screw $\frac{1}{4}" \times 1"$ | 13. A/V barrier | 21. Perforated base closure |
| 6. Horizontal L-profile | 14. Exterior wall | |
| 7. Vertical Omega-profile | 15. Outer corner closure | |
| 8. Joint profile | 16. Jamb closure | |
| | | D - System depth |
| | | t - Panel thickness |



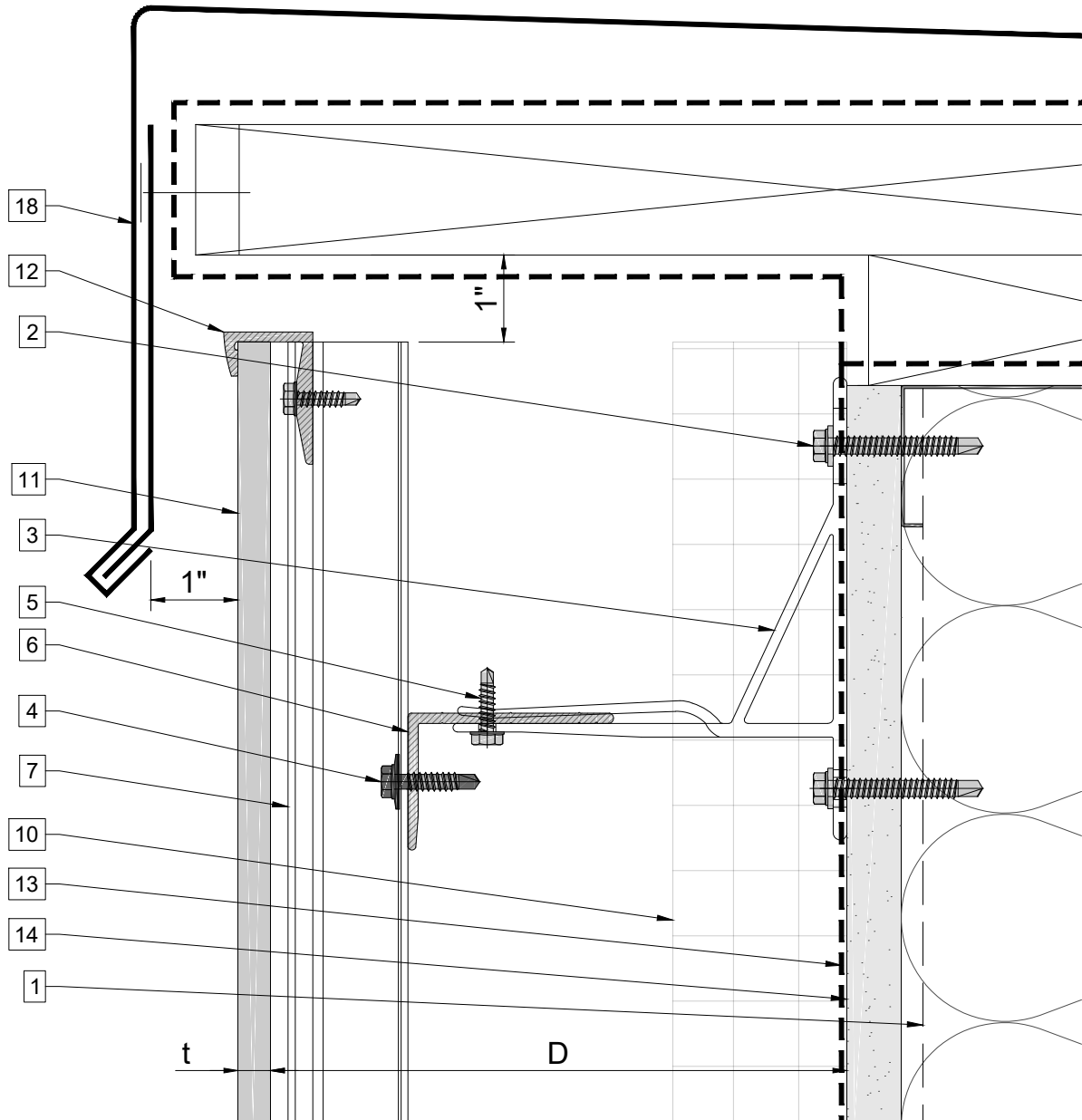
Legend

- | | | |
|--|--------------------------|---|
| 1. Steel stud (16 GA typical) | 9. Press Profile / Piece | 17. Vertical L-profile |
| 2. Perimeter anchor | 10. Insulation | 18. Coping |
| 3. Alpha H wall bracket | 11. Tile | 19. Perforated window head closure |
| 4. st/st self-drilling screw $\frac{3}{16}" \times \frac{3}{4}"$ | 12. Tile Clamp | 20. Window sill |
| 5. st/st self-drilling screw $\frac{1}{4}" \times 1"$ | 13. A/V barrier | 21. Perforated base closure |
| 6. Horizontal L-profile | 14. Exterior wall | |
| 7. Vertical Omega-profile | 15. Outer corner closure | |
| 8. Joint profile | 16. Jamb closure | |
| | | D - System depth
t - Panel thickness |



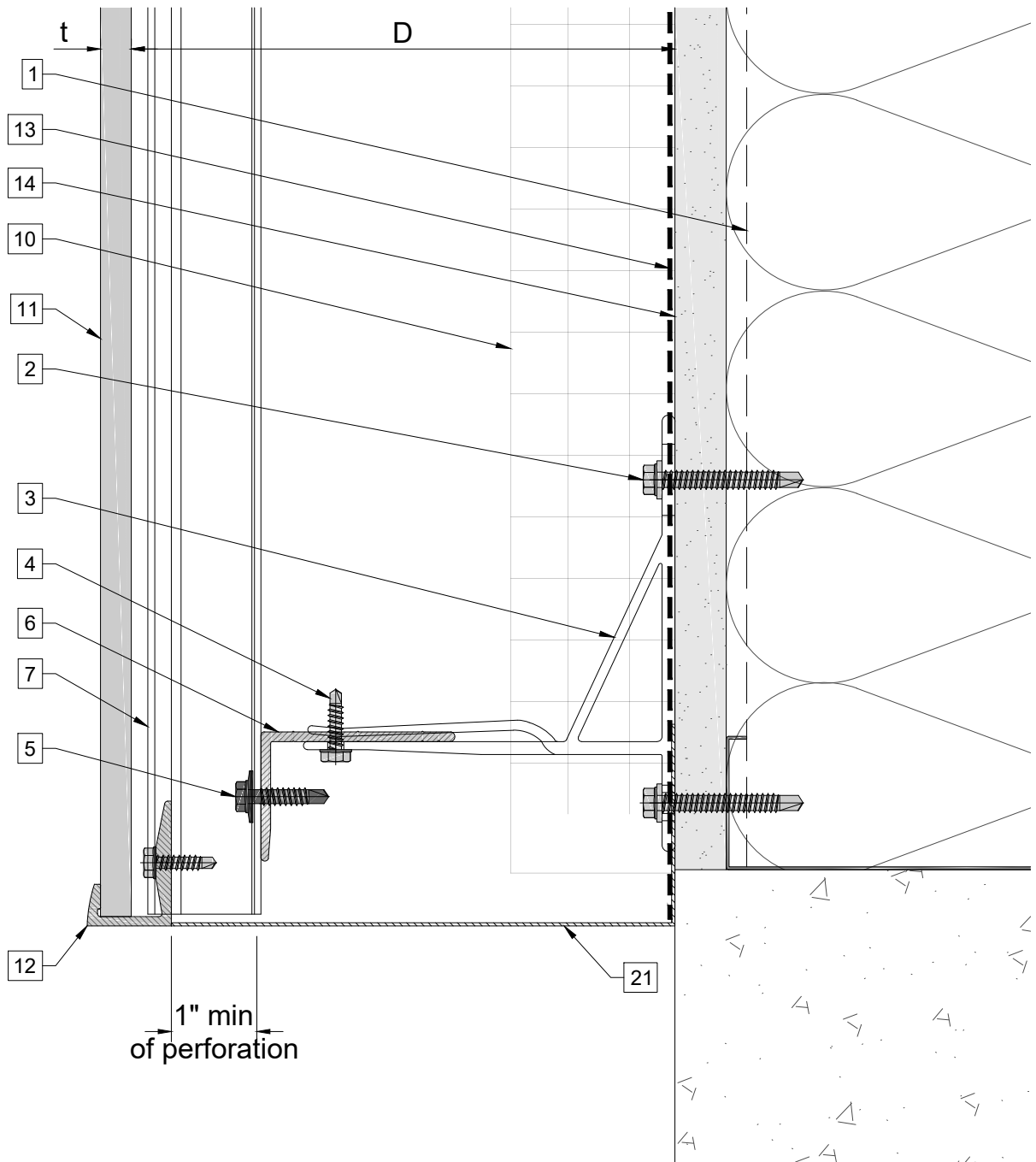
Legend

- | | | |
|--|--------------------------|------------------------------------|
| 1. Steel stud (16 GA typical) | 9. Press Profile / Piece | 17. Vertical L-profile |
| 2. Perimeter anchor | 10. Insulation | 18. Coping |
| 3. Alpha H wall bracket | 11. Tile | 19. Perforated window head closure |
| 4. st/st self-drilling screw $\frac{3}{16}" \times \frac{3}{4}"$ | 12. Tile Clamp | 20. Window sill |
| 5. st/st self-drilling screw $\frac{1}{4}" \times 1"$ | 13. A/V barrier | 21. Perforated base closure |
| 6. Horizontal L-profile | 14. Exterior wall | |
| 7. Vertical Omega-profile | 15. Outer corner closure | |
| 8. Joint profile | 16. Jamb closure | |
| | | D - System depth |
| | | t - Panel thickness |



Legend

- | | | |
|--|--------------------------|------------------------------------|
| 1. Steel stud (16 GA typical) | 9. Press Profile / Piece | 17. Vertical L-profile |
| 2. Perimeter anchor | 10. Insulation | 18. Coping |
| 3. Alpha H wall bracket | 11. Tile | 19. Perforated window head closure |
| 4. st/st self-drilling screw $\frac{3}{16}" \times \frac{3}{4}"$ | 12. Tile Clamp | 20. Window sill |
| 5. st/st self-drilling screw $\frac{1}{4}" \times 1"$ | 13. A/V barrier | 21. Perforated base closure |
| 6. Horizontal L-profile | 14. Exterior wall | |
| 7. Vertical Omega-profile | 15. Outer corner closure | |
| 8. Joint profile | 16. Jamb closure | |
- D - System depth
t - Panel thickness



Legend

1. Steel stud (16 GA typical)	9. Press Profile / Piece	17. Vertical L-profile
2. Perimeter anchor	10. Insulation	18. Coping
3. Alpha H wall bracket	11. Tile	19. Perforated window head closure
4. st/st self-drilling screw $\frac{3}{16}$ "x $\frac{3}{4}$ "	12. Tile Clamp	20. Window sill
5. st/st self-drilling screw $\frac{1}{4}$ "x1"	13. A/V barrier	21. Perforated base closure
6. Horizontal L-profile	14. Exterior wall	
7. Vertical Omega-profile	15. Outer corner closure	
8. Joint profile	16. Jamb closure	
		D - System depth t - Panel thickness