

System depth

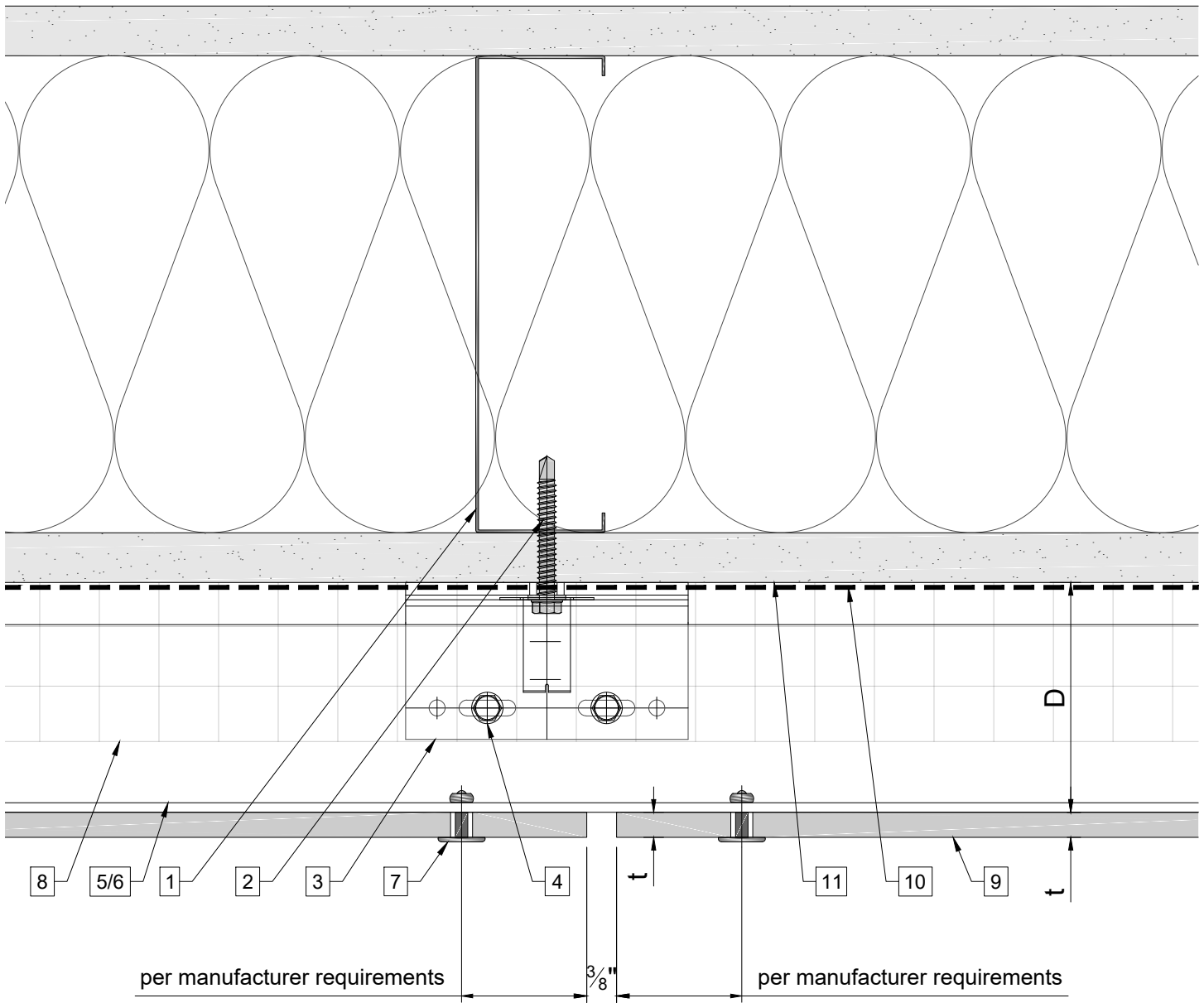
Bracket	min. D system depth	max. D system depth	t panel thickness
Alpha H 035	1 $\frac{3}{4}$ " (44mm)	2 $\frac{15}{16}$ " (75mm)	varies
Alpha H 050	2 $\frac{1}{16}$ " (53mm)	3 $\frac{9}{16}$ " (90mm)	varies
Alpha H 080	3 $\frac{1}{4}$ " (83mm)	4 $\frac{3}{4}$ " (120mm)	varies
Alpha H 115	4 $\frac{5}{8}$ " (118mm)	6 $\frac{1}{8}$ " (155mm)	varies
Alpha H 150	6" (153mm)	7 $\frac{1}{2}$ " (190mm)	varies
Alpha H 185	7 $\frac{3}{8}$ " (188mm)	8 $\frac{7}{8}$ " (225mm)	varies
Alpha H 220	8 $\frac{3}{4}$ " (223mm)	10 $\frac{1}{4}$ " (260mm)	varies
Alpha H 235	9 $\frac{3}{8}$ " (238mm)	10 $\frac{7}{8}$ " (275mm)	varies

Legend

1. Steel stud (16 GA typical)
2. Perimeter anchor
3. Alpha H wall bracket
4. st/st self-drilling screw $\frac{3}{16}$ "x $\frac{3}{4}$ "
5. Horizontal L-profile
6. Horizontal T-profile
7. Blind rivet
8. Insulation
9. Panel
10. A/V barrier

11. Exterior wall
12. Outer corner closure
13. Inner corner closure
14. Jamb closure
15. Aluminum angle
16. Coping
17. Perforated window head closure
18. Window sill
19. Perforated base closure

D - System depth
t - Panel thickness
* Ventilation will vary based on insulation depth.
** Minimum ventilation requirement should be qualified by panel manufacturer.



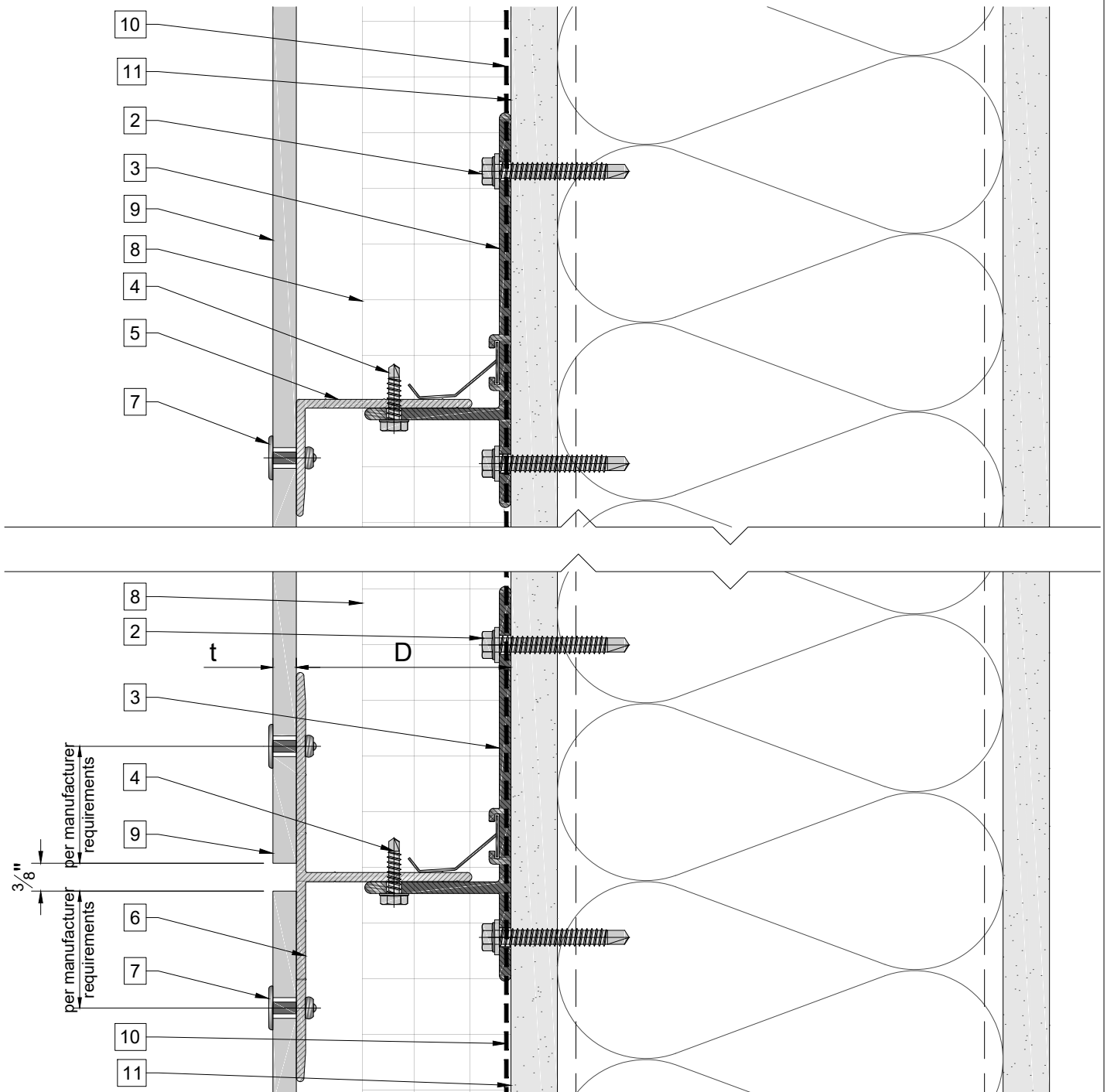
Legend

1. Steel stud (16 GA typical)
2. Perimeter anchor
3. Alpha H wall bracket
4. st/st self-drilling screw $\frac{3}{16} \times \frac{3}{4}$ "
5. Horizontal L-profile
6. Horizontal T-profile
7. Blind rivet
8. Insulation
9. Panel
10. A/V barrier

11. Exterior wall
12. Outer corner closure
13. Inner corner closure
14. Jamb closure
15. Aluminum angle
16. Coping
17. Perforated window head closure
18. Window sill
19. Perforated base closure

D - System depth
 t - Panel thickness
 * Ventilation will vary based on insulation depth.
 ** Minimum ventilation requirement should be qualified by panel manufacturer.

Horizontal joint



Legend

1. Steel stud (16 GA typical)
2. Perimeter anchor
3. Alpha H wall bracket
4. st/st self-drilling screw $\frac{3}{16} \times \frac{3}{4}$
5. Horizontal L-profile
6. Horizontal T-profile
7. Blind rivet
8. Insulation
9. Panel
10. A/V barrier

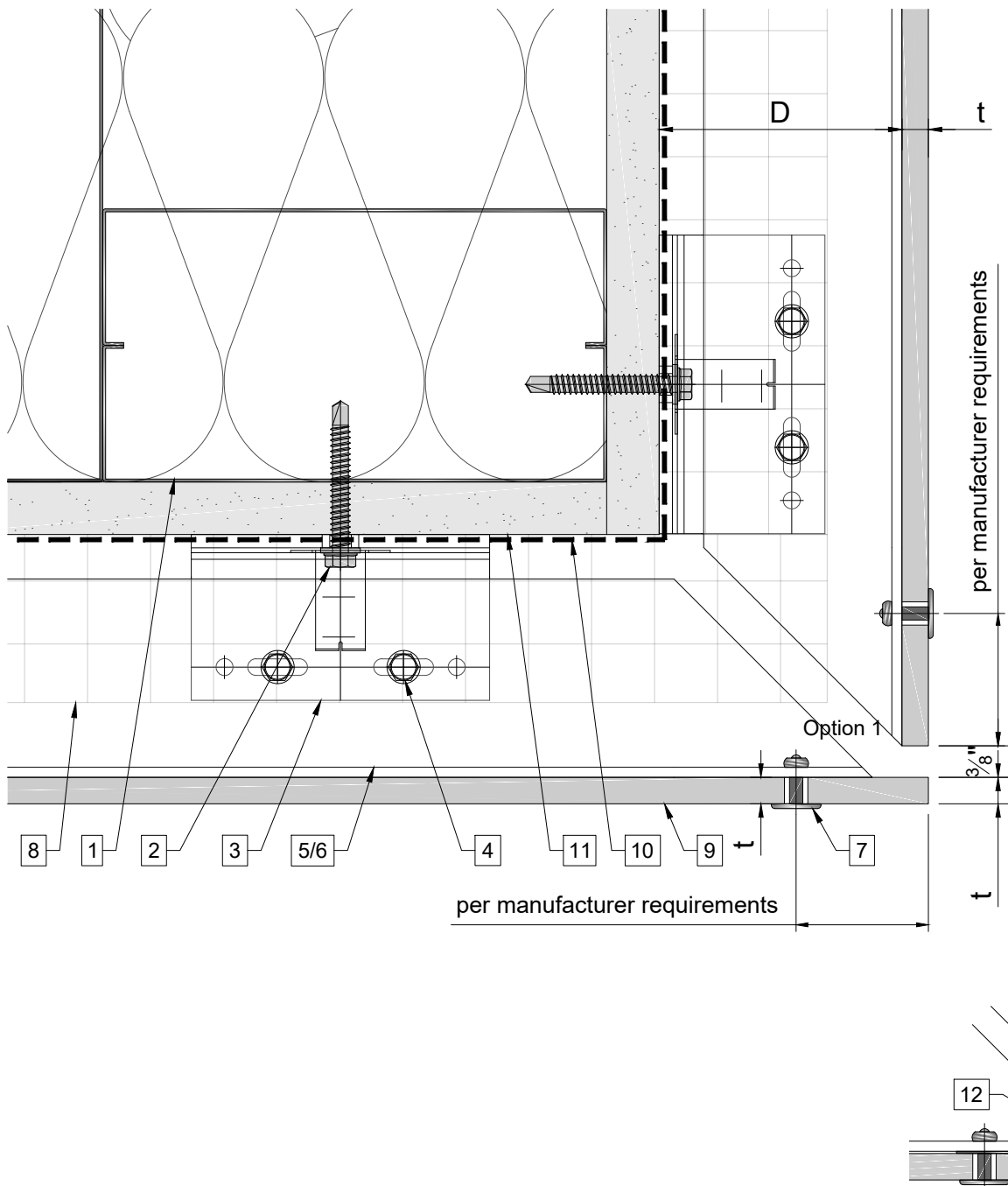
11. Exterior wall
12. Outer corner closure
13. Inner corner closure
14. Jamb closure
15. Aluminum angle
16. Coping
17. Perforated window head closure
18. Window sill
19. Perforated base closure

D - System depth

t - Panel thickness

* Ventilation will vary based on insulation depth.

** Minimum ventilation requirement should be qualified by panel manufacturer.

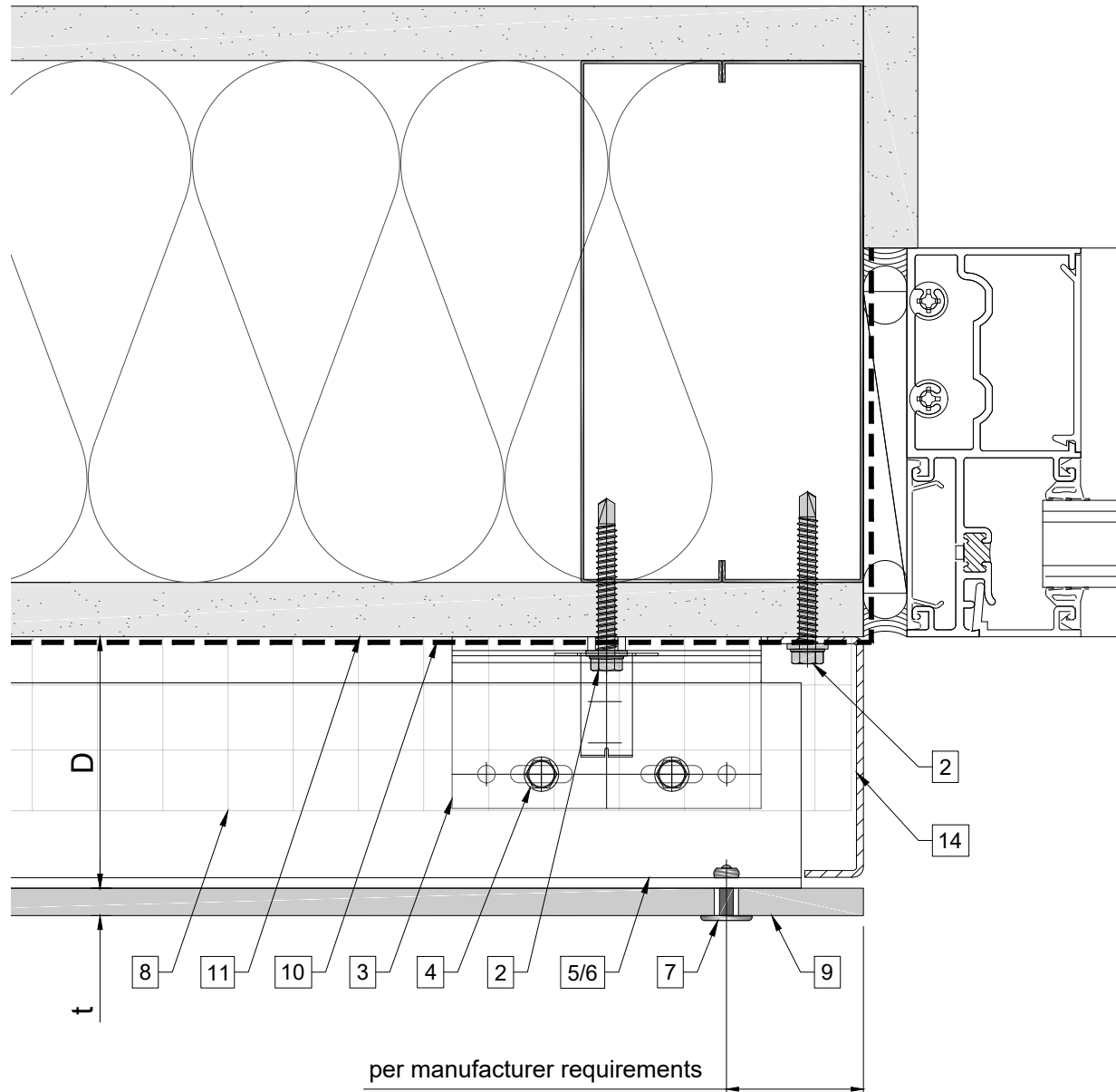


Legend

1. Steel stud (16 GA typical)
2. Perimeter anchor
3. Alpha H wall bracket
4. st/st self-drilling screw $\frac{3}{16} \times \frac{3}{4}$ "
5. Horizontal L-profile
6. Horizontal T-profile
7. Blind rivet
8. Insulation
9. Panel
10. A/V barrier

11. Exterior wall
12. Outer corner closure
13. Inner corner closure
14. Jamb closure
15. Aluminum angle
16. Coping
17. Perforated window head closure
18. Window sill
19. Perforated base closure

D - System depth
 t - Panel thickness
 * Ventilation will vary based on insulation depth.
 ** Minimum ventilation requirement should be qualified by panel manufacturer.

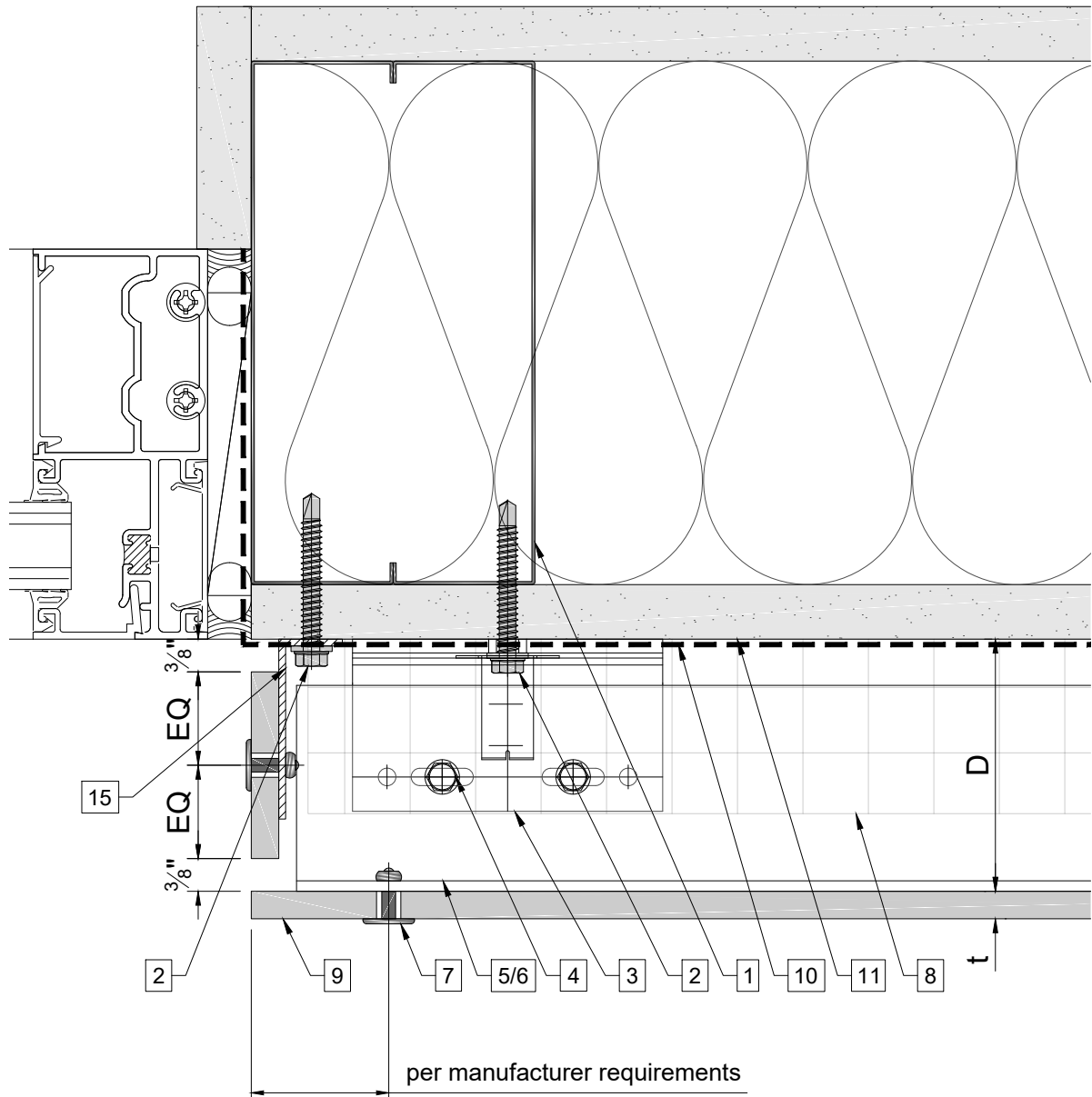


Legend

1. Steel stud (16 GA typical)
2. Perimeter anchor
3. Alpha H wall bracket
4. st/st self-drilling screw $\frac{3}{16} \times \frac{3}{4}$ "
5. Horizontal L-profile
6. Horizontal T-profile
7. Blind rivet
8. Insulation
9. Panel
10. A/V barrier

11. Exterior wall
12. Outer corner closure
13. Inner corner closure
14. Jamb closure
15. Aluminum angle
16. Coping
17. Perforated window head closure
18. Window sill
19. Perforated base closure

D - System depth
t - Panel thickness
* Ventilation will vary based on insulation depth.
** Minimum ventilation requirement should be qualified by panel manufacturer.



Legend

1. Steel stud (16 GA typical)
2. Perimeter anchor
3. Alpha H wall bracket
4. st/st self-drilling screw $\frac{3}{16} \times \frac{3}{4}$ "
5. Horizontal L-profile
6. Horizontal T-profile
7. Blind rivet
8. Insulation
9. Panel
10. A/V barrier

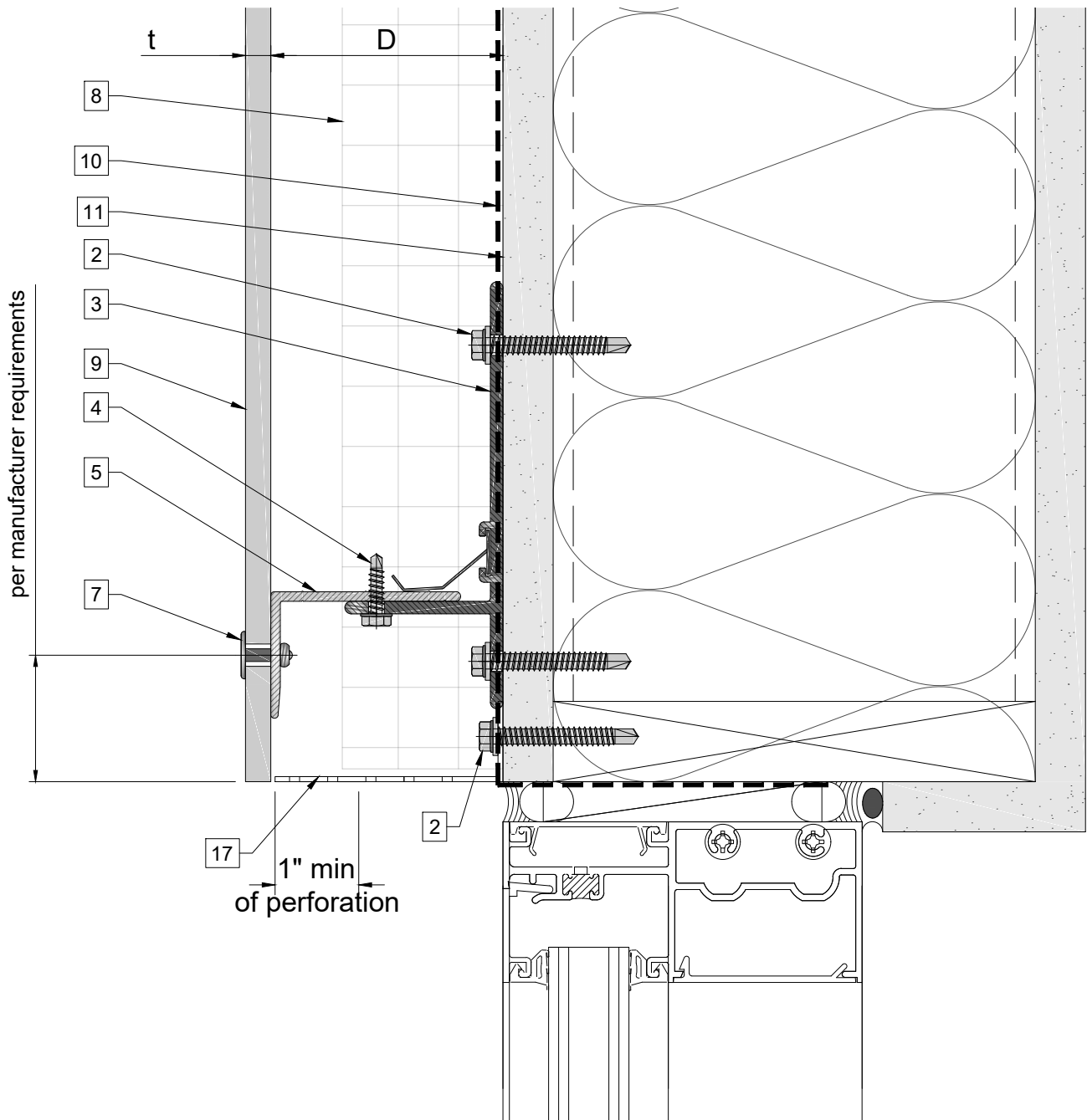
11. Exterior wall
12. Outer corner closure
13. Inner corner closure
14. Jamb closure
15. Aluminum angle
16. Coping
17. Perforated window head closure
18. Window sill
19. Perforated base closure

D - System depth

t - Panel thickness

* Ventilation will vary based on insulation depth.

** Minimum ventilation requirement should be qualified by panel manufacturer.



Legend

1. Steel stud (16 GA typical)
2. Perimeter anchor
3. Alpha H wall bracket
4. st/st self-drilling screw $\frac{3}{16} \times \frac{3}{4}$ "
5. Horizontal L-profile
6. Horizontal T-profile
7. Blind rivet
8. Insulation
9. Panel
10. A/V barrier

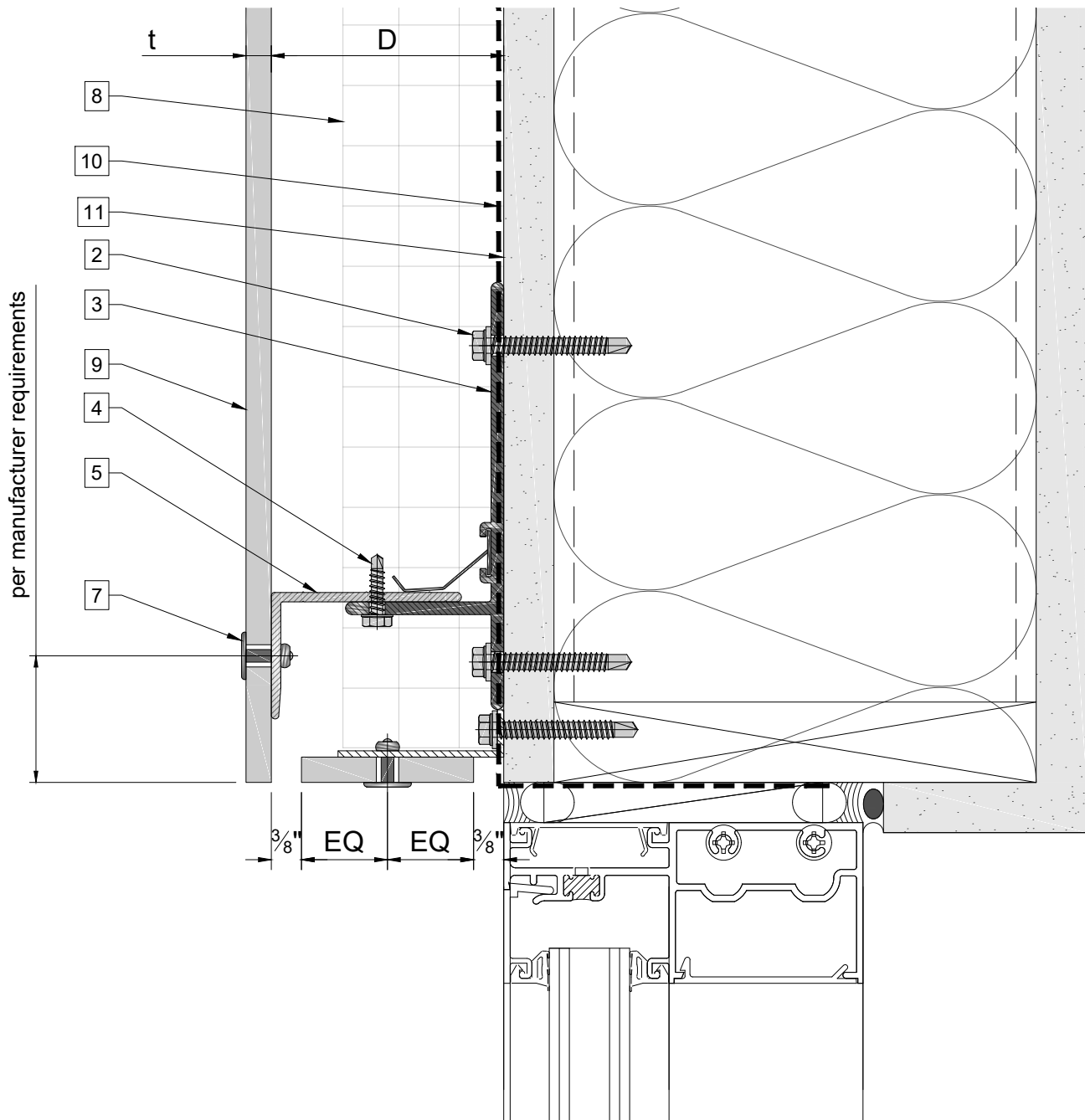
11. Exterior wall
12. Outer corner closure
13. Inner corner closure
14. Jamb closure
15. Aluminum angle
16. Coping
17. Perforated window head closure
18. Window sill
19. Perforated base closure

D - System depth

t - Panel thickness

* Ventilation will vary based on insulation depth.

** Minimum ventilation requirement should be qualified by panel manufacturer.



Legend

1. Steel stud (16 GA typical)
2. Perimeter anchor
3. Alpha H wall bracket
4. st/st self-drilling screw $\frac{3}{16} \times \frac{3}{4}$ "
5. Horizontal L-profile
6. Horizontal T-profile
7. Blind rivet
8. Insulation
9. Panel
10. A/V barrier

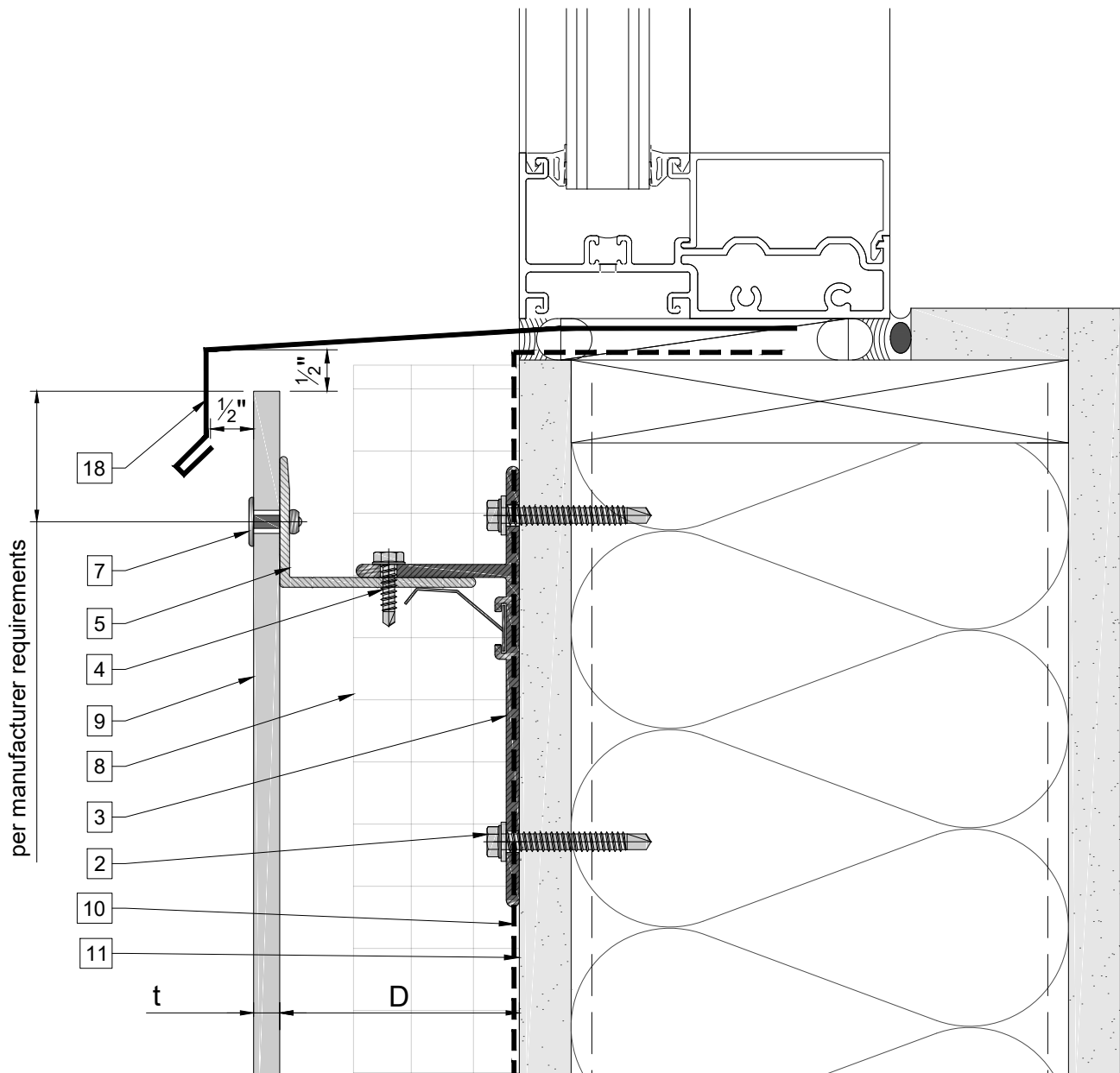
11. Exterior wall
12. Outer corner closure
13. Inner corner closure
14. Jamb closure
15. Aluminum angle
16. Coping
17. Perforated window head closure
18. Window sill
19. Perforated base closure

D - System depth

t - Panel thickness

* Ventilation will vary based on insulation depth.

** Minimum ventilation requirement should be qualified by panel manufacturer.



Legend

1. Steel stud (16 GA typical)
2. Perimeter anchor
3. Alpha H wall bracket
4. st/st self-drilling screw $\frac{3}{16} \times \frac{3}{4}$ "
5. Horizontal L-profile
6. Horizontal T-profile
7. Blind rivet
8. Insulation
9. Panel
10. A/V barrier

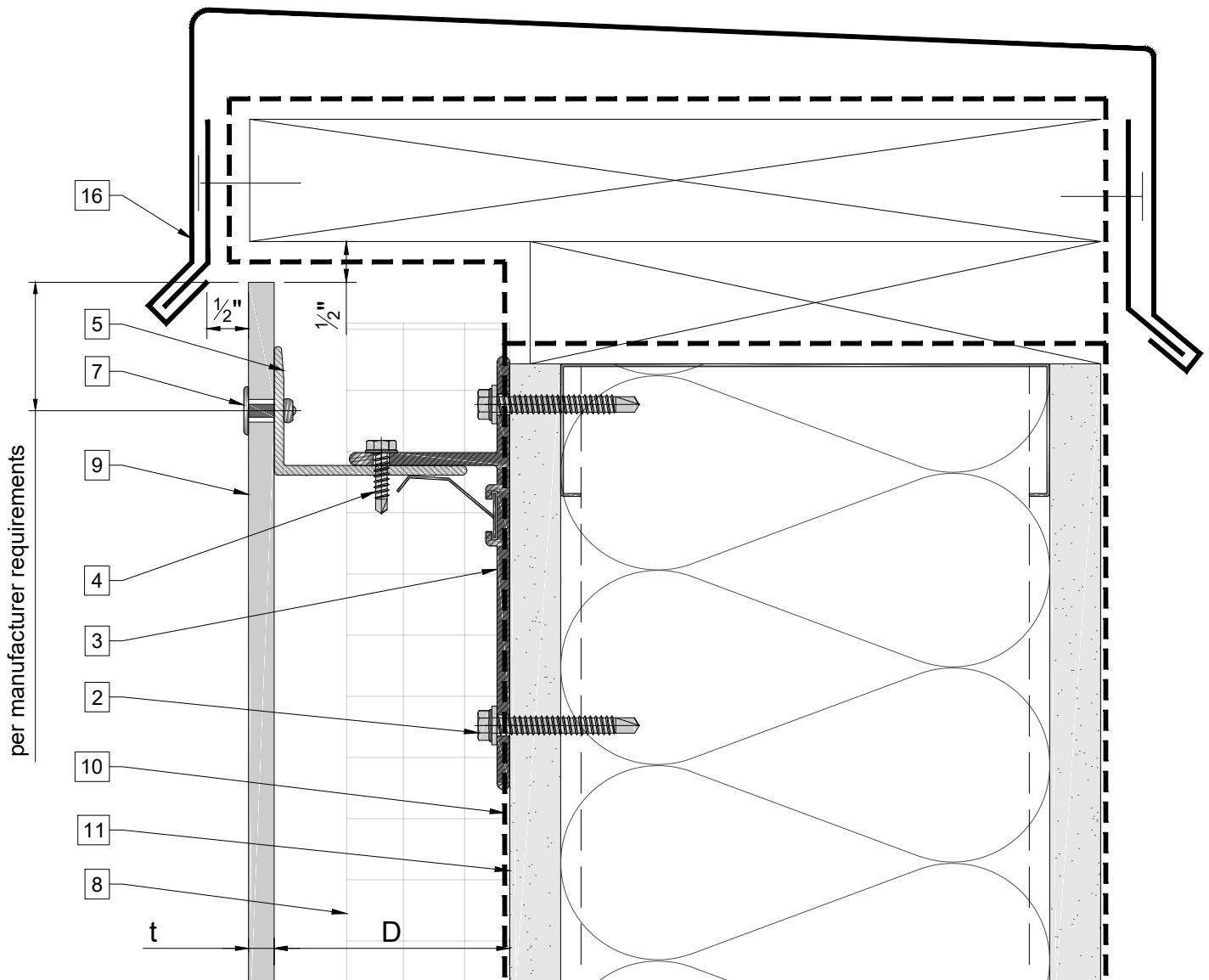
11. Exterior wall
12. Outer corner closure
13. Inner corner closure
14. Jamb closure
15. Aluminum angle
16. Coping
17. Perforated window head closure
18. Window sill
19. Perforated base closure

D - System depth

t - Panel thickness

* Ventilation will vary based on insulation depth.

** Minimum ventilation requirement should be qualified by panel manufacturer.



Legend

1. Steel stud (16 GA typical)
2. Perimeter anchor
3. Alpha H wall bracket
4. st/st self-drilling screw $\frac{3}{16} \times \frac{3}{4}$ "
5. Horizontal L-profile
6. Horizontal T-profile
7. Blind rivet
8. Insulation
9. Panel
10. A/V barrier

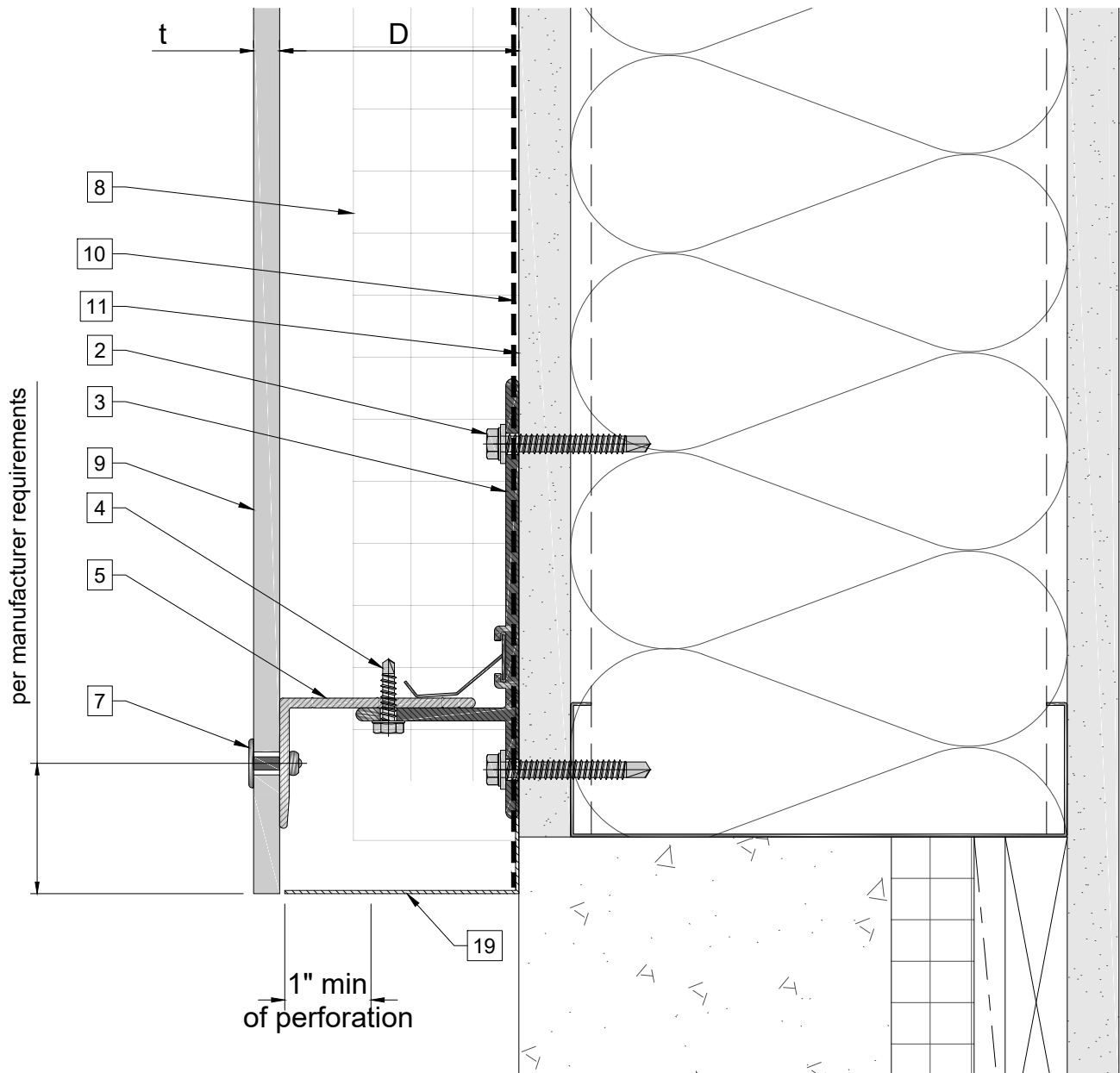
11. Exterior wall
12. Outer corner closure
13. Inner corner closure
14. Jamb closure
15. Aluminum angle
16. Coping
17. Perforated window head closure
18. Window sill
19. Perforated base closure

D - System depth

t - Panel thickness

* Ventilation will vary based on insulation depth.

** Minimum ventilation requirement should be qualified by panel manufacturer.

**Legend**

1. Steel stud (16 GA typical)
2. Perimeter anchor
3. Alpha H wall bracket
4. st/st self-drilling screw $\frac{3}{16} \times \frac{3}{4}$ "
5. Horizontal L-profile
6. Horizontal T-profile
7. Blind rivet
8. Insulation
9. Panel
10. A/V barrier

11. Exterior wall
12. Outer corner closure
13. Inner corner closure
14. Jamb closure
15. Aluminum angle
16. Coping
17. Perforated window head closure
18. Window sill
19. Perforated base closure

D - System depth

t - Panel thickness

* Ventilation will vary based on insulation depth.

** Minimum ventilation requirement should be qualified by panel manufacturer.