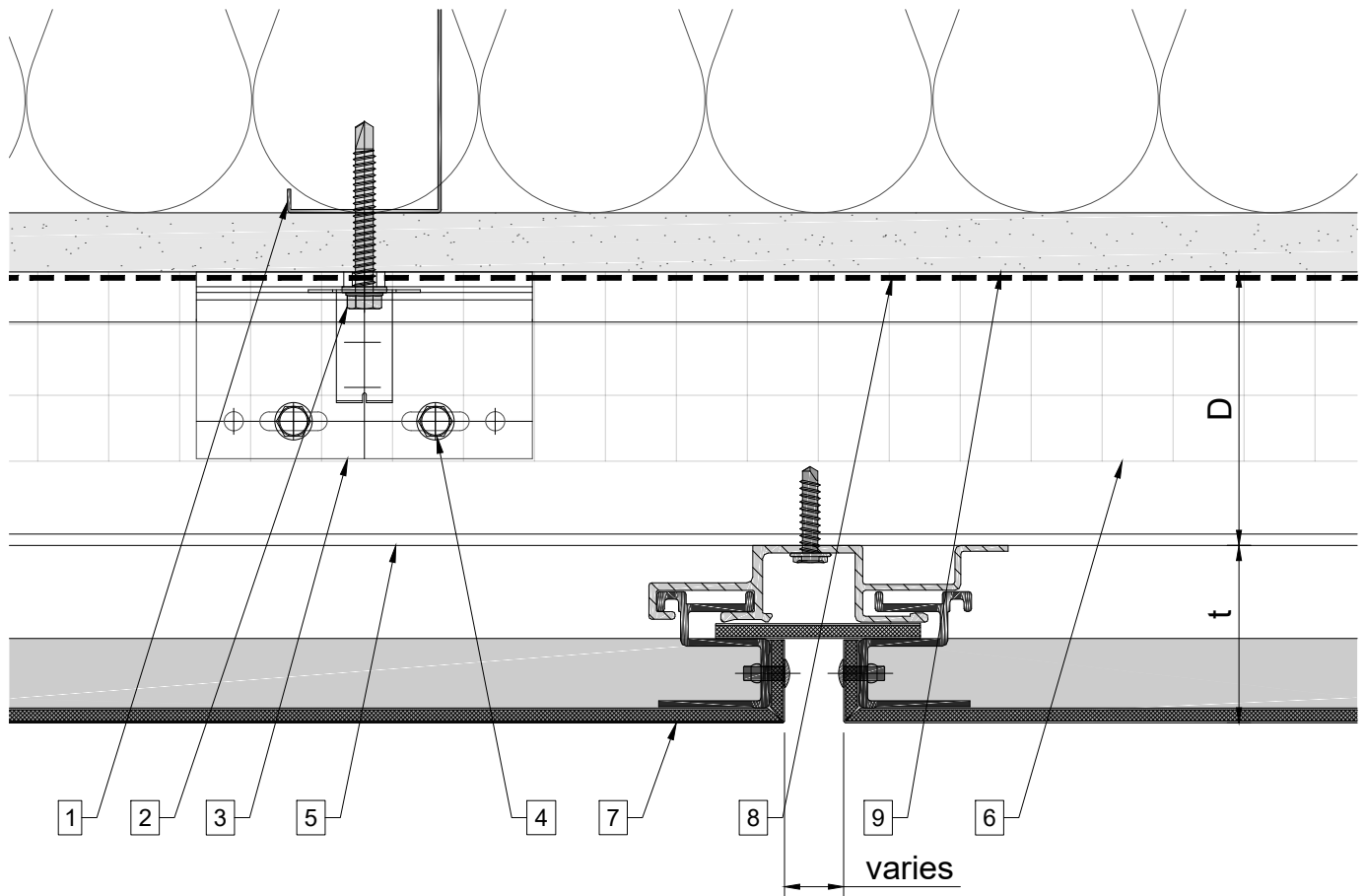


System depth



System depth

Bracket	min. D system depth	max. D system depth	t panel thickness
Alpha H 035	1 $\frac{3}{4}$ " (44mm)	2 $\frac{15}{16}$ " (75mm)	varies
Alpha H 050	2 $\frac{1}{16}$ " (53mm)	3 $\frac{9}{16}$ " (90mm)	varies
Alpha H 080	3 $\frac{1}{4}$ " (83mm)	4 $\frac{3}{4}$ " (120mm)	varies
Alpha H 115	4 $\frac{5}{8}$ " (118mm)	6 $\frac{1}{8}$ " (155mm)	varies
Alpha H 150	6" (153mm)	7 $\frac{1}{2}$ " (190mm)	varies
Alpha H 185	7 $\frac{3}{8}$ " (188mm)	8 $\frac{7}{8}$ " (225mm)	varies
Alpha H 220	8 $\frac{3}{4}$ " (223mm)	10 $\frac{1}{4}$ " (260mm)	varies
Alpha H 235	9 $\frac{3}{8}$ " (238mm)	10 $\frac{7}{8}$ " (275mm)	varies

Legend

1. Steel stud (16 GA typical)
2. Perimeter anchor
3. Alpha H wall bracket
4. st/st self-drilling screw $\frac{3}{16}$ "x $\frac{3}{4}$ "
5. Horizontal L-profile (T-profile optional)
6. Insulation
7. ACM panel system
8. A/V barrier
9. Exterior wall

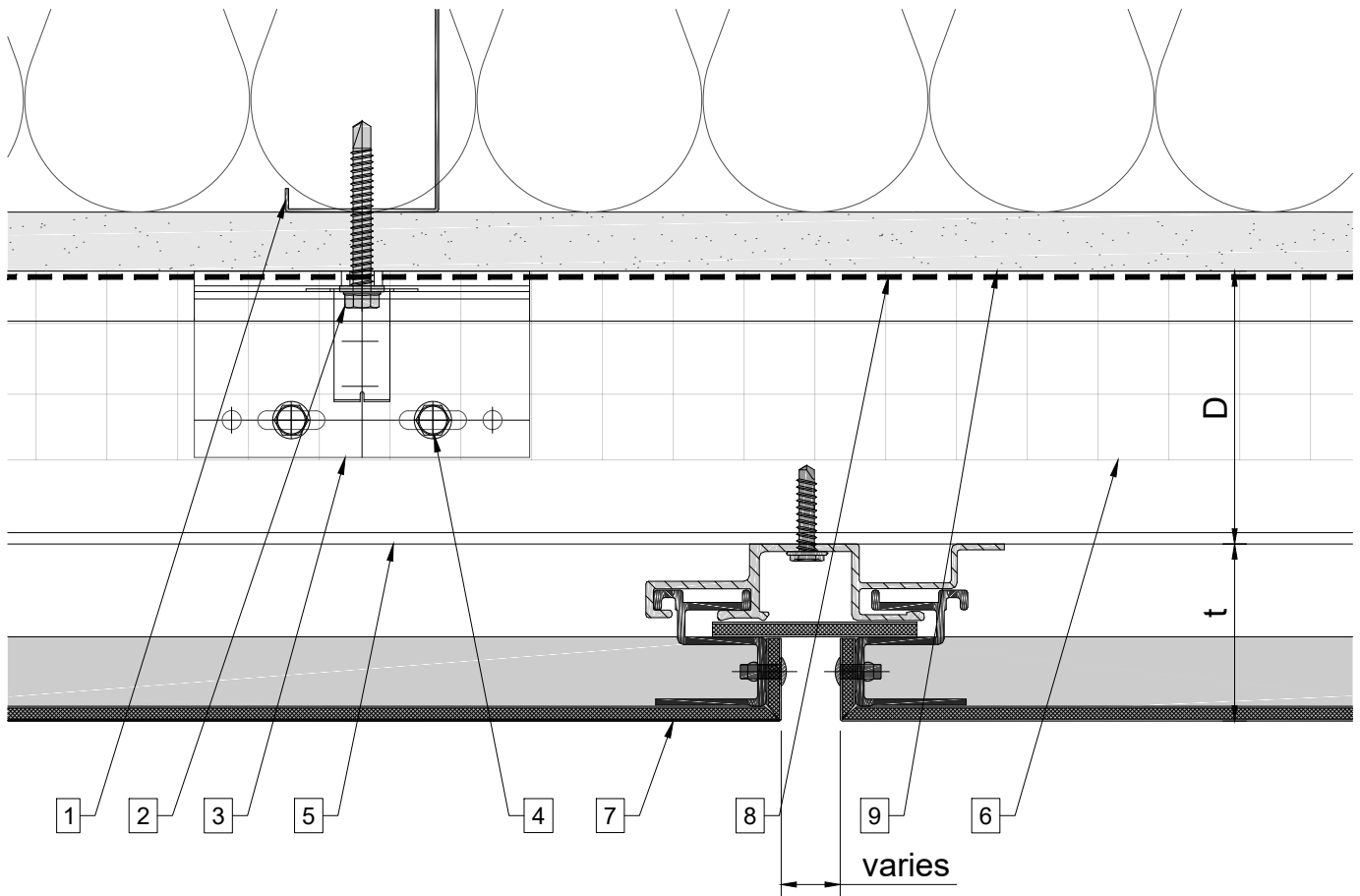
10. ACM coping
11. Window sill

D - System depth
t - ACM panel system thickness

* Ventilation will vary based on insulation depth.

** Minimum ventilation requirement should be qualified by panel manufacturer.

Vertical joint



Legend

1. Steel stud (16 GA typical)
2. Perimeter anchor
3. Alpha H wall bracket
4. st/st self-drilling screw $\frac{3}{16} \times \frac{3}{4}$ "
5. Horizontal L-profile (T-profile optional)
6. Insulation
7. ACM panel system
8. A/V barrier
9. Exterior wall

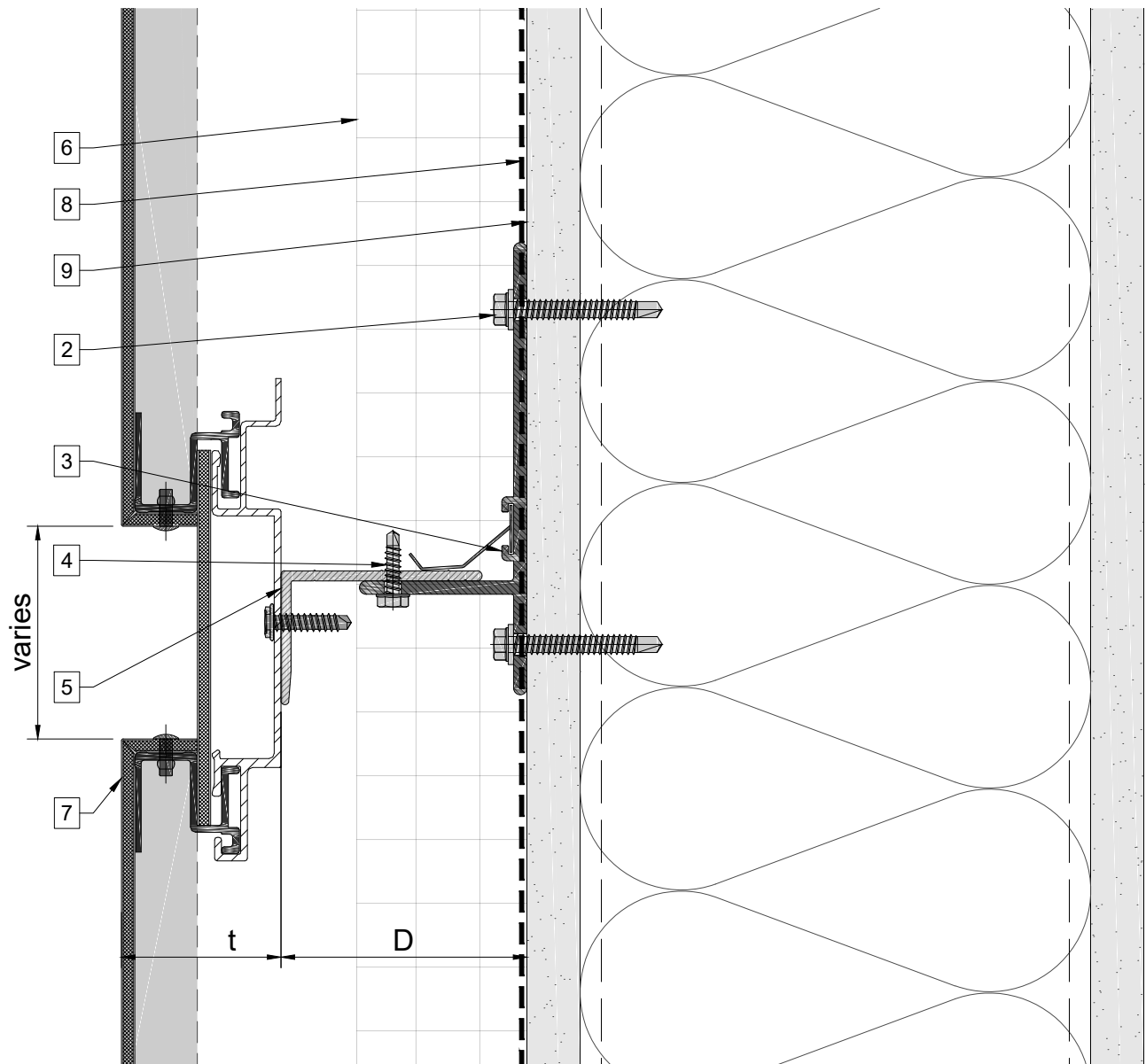
10. ACM coping
11. Window sill

D - System depth
t - ACM panel system thickness

* Ventilation will vary based on insulation depth.

** Minimum ventilation requirement should be qualified by panel manufacturer.

Horizontal joint



Legend

1. Steel stud (16 GA typical)
2. Perimeter anchor
3. Alpha H wall bracket
4. st/st self-drilling screw $\frac{3}{16} \times \frac{3}{4}$ "
5. Horizontal L-profile (T-profile optional)
6. Insulation
7. ACM panel system
8. A/V barrier
9. Exterior wall

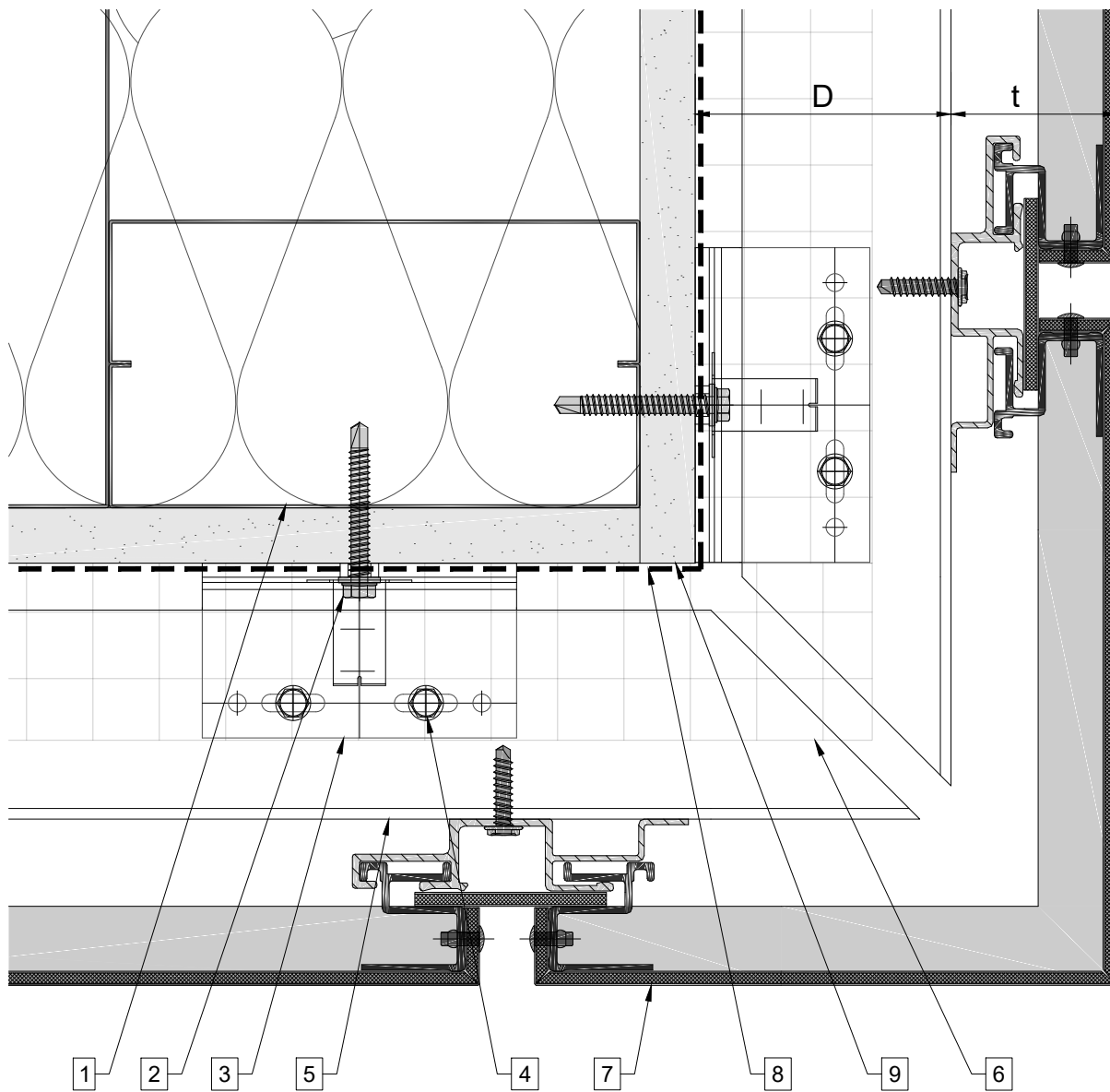
10. ACM coping
11. Window sill

D - System depth

t - ACM panel system thickness

* Ventilation will vary based on insulation depth.

** Minimum ventilation requirement should be qualified by panel manufacturer.



Legend

1. Steel stud (16 GA typical)
2. Perimeter anchor
3. Alpha H wall bracket
4. st/st self-drilling screw $\frac{3}{16} \times \frac{3}{4}$ "
5. Horizontal L-profile (T-profile optional)
6. Insulation
7. ACM panel system
8. A/V barrier
9. Exterior wall

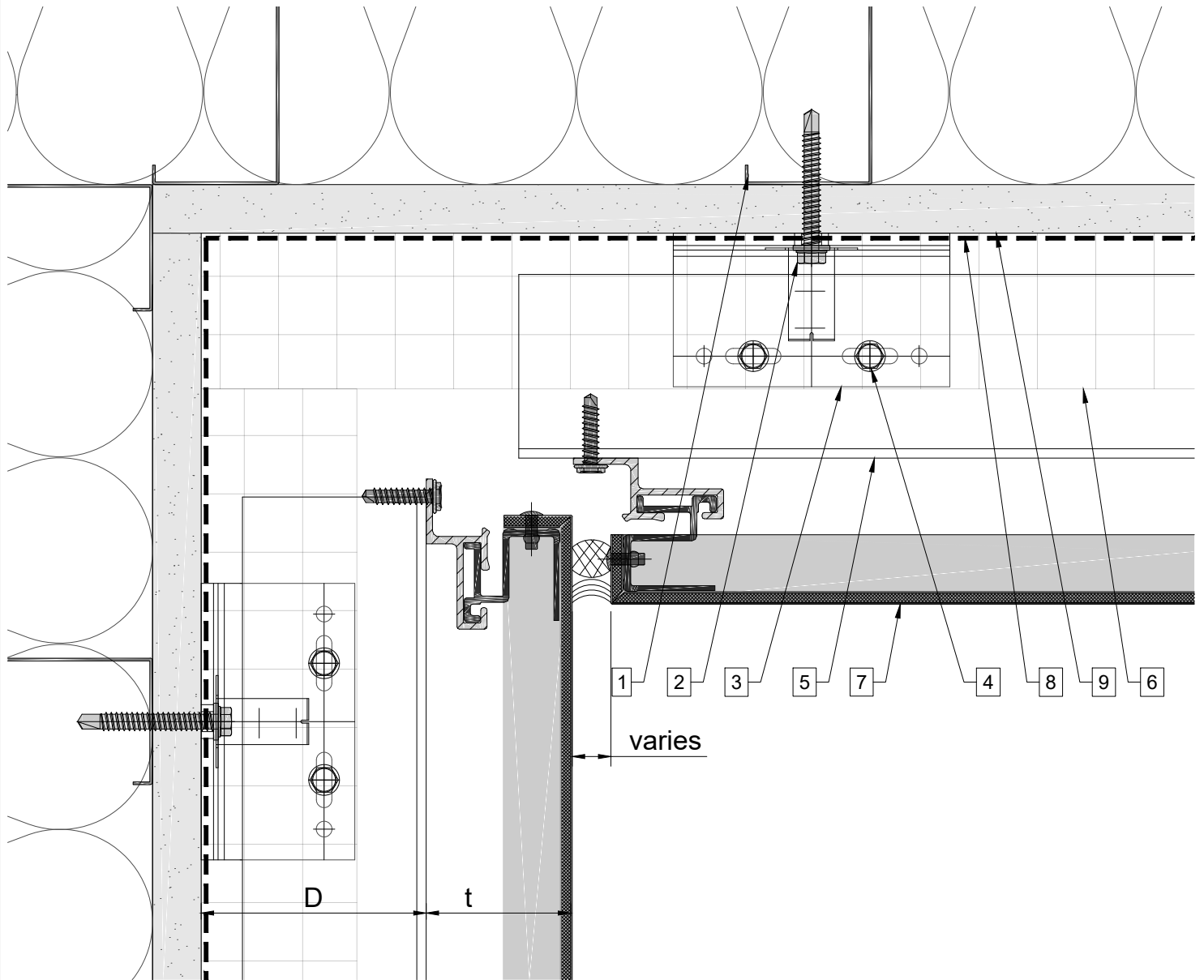
10. ACM coping
11. Window sill

D - System depth

t - ACM panel system thickness

* Ventilation will vary based on insulation depth.

** Minimum ventilation requirement should be qualified by panel manufacturer.



Legend

1. Steel stud (16 GA typical)
2. Perimeter anchor
3. Alpha H wall bracket
4. st/st self-drilling screw $\frac{3}{16} \times \frac{3}{4}$ "
5. Horizontal L-profile (T-profile optional)
6. Insulation
7. ACM panel system
8. A/V barrier
9. Exterior wall

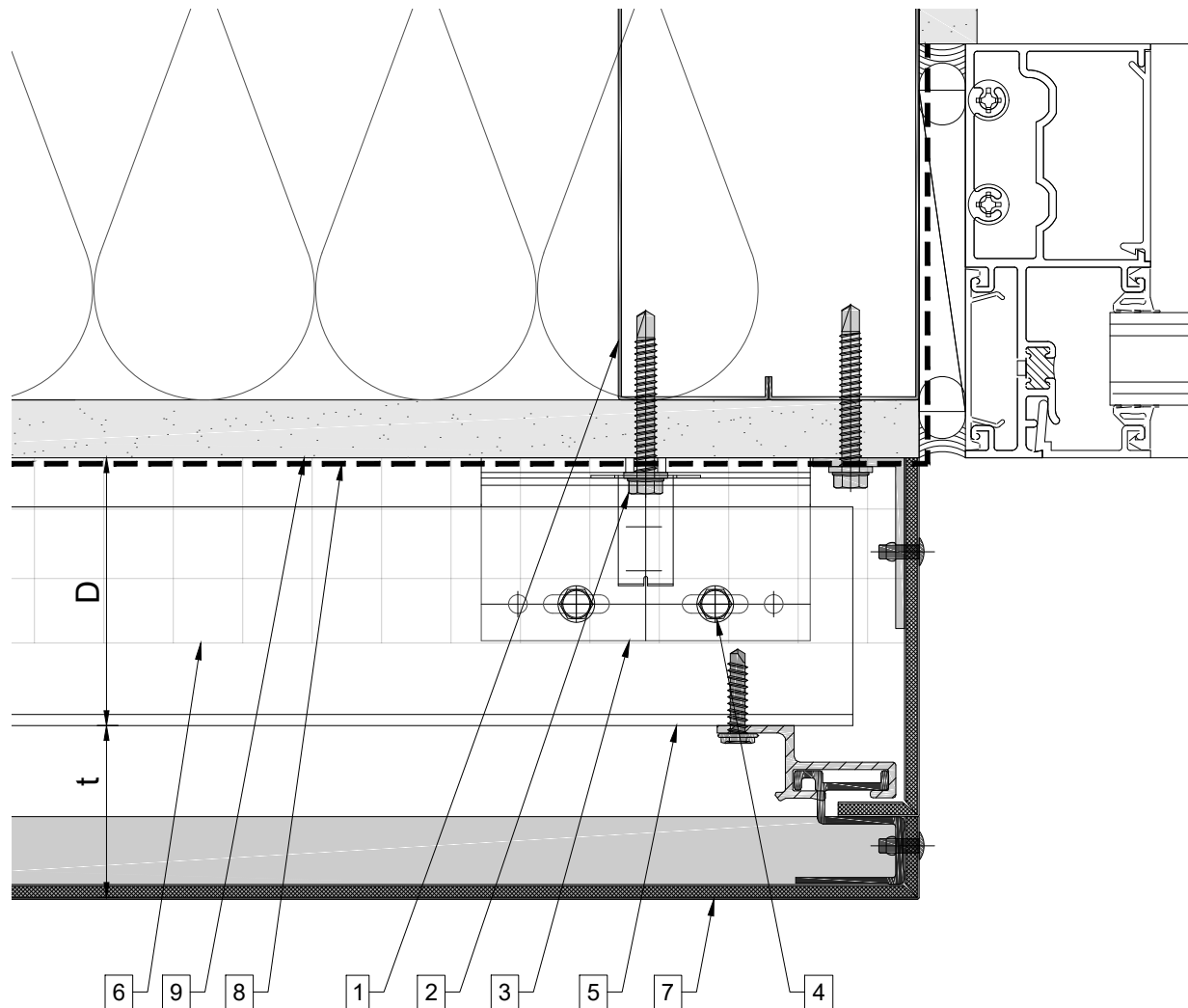
10. ACM coping
11. Window sill

D - System depth

t - ACM panel system thickness

* Ventilation will vary based on insulation depth.

** Minimum ventilation requirement should be qualified by panel manufacturer.



Legend

1. Steel stud (16 GA typical)
2. Perimeter anchor
3. Alpha H wall bracket
4. st/st self-drilling screw $\frac{3}{16} \times \frac{3}{4}$ "
5. Horizontal L-profile (T-profile optional)
6. Insulation
7. ACM panel system
8. A/V barrier
9. Exterior wall

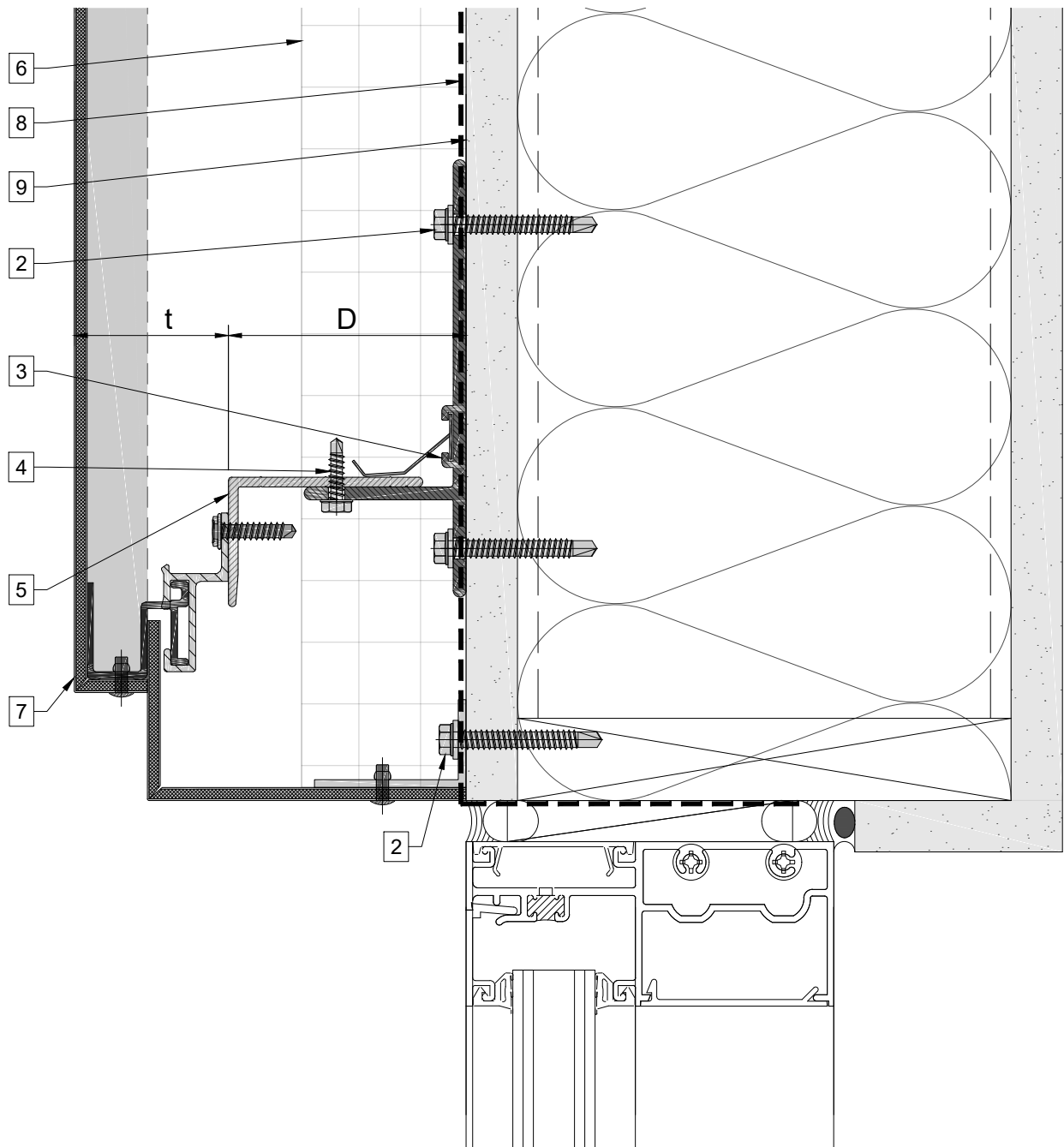
10. ACM coping
11. Window sill

D - System depth

t - ACM panel system thickness

* Ventilation will vary based on insulation depth.

** Minimum ventilation requirement should be qualified by panel manufacturer.



Legend

1. Steel stud (16 GA typical)
2. Perimeter anchor
3. Alpha H wall bracket
4. st/st self-drilling screw $\frac{3}{16} \times \frac{3}{4}$ "
5. Horizontal L-profile (T-profile optional)
6. Insulation
7. ACM panel system
8. A/V barrier
9. Exterior wall

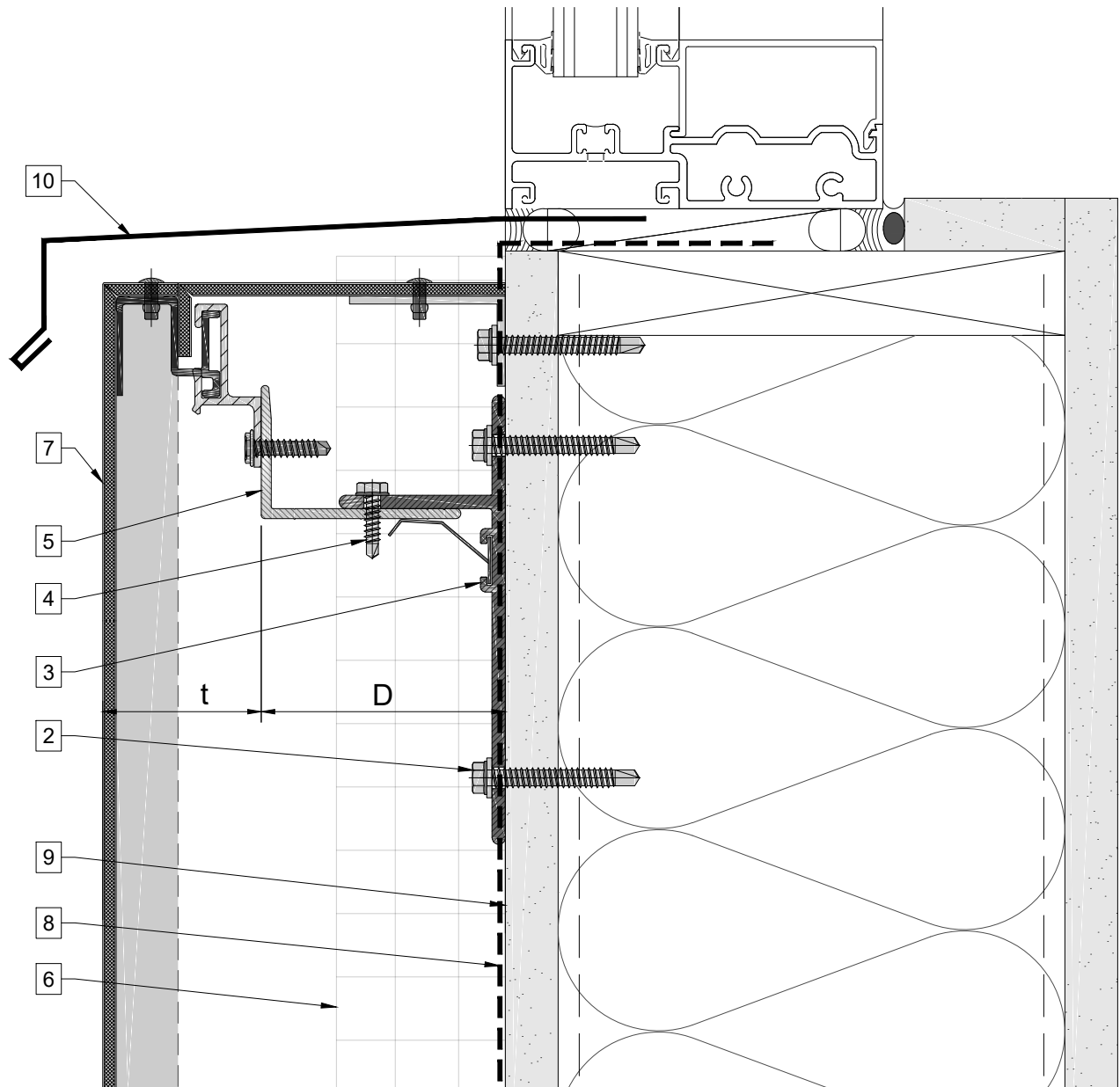
10. ACM coping
11. Window sill

D - System depth

t - ACM panel system thickness

* Ventilation will vary based on insulation depth.

** Minimum ventilation requirement should be qualified by panel manufacturer.



Legend

1. Steel stud (16 GA typical)
2. Perimeter anchor
3. Alpha H wall bracket
4. st/st self-drilling screw $\frac{3}{16} \times \frac{3}{4}$ "
5. Horizontal L-profile (T-profile optional)
6. Insulation
7. ACM panel system
8. A/V barrier
9. Exterior wall

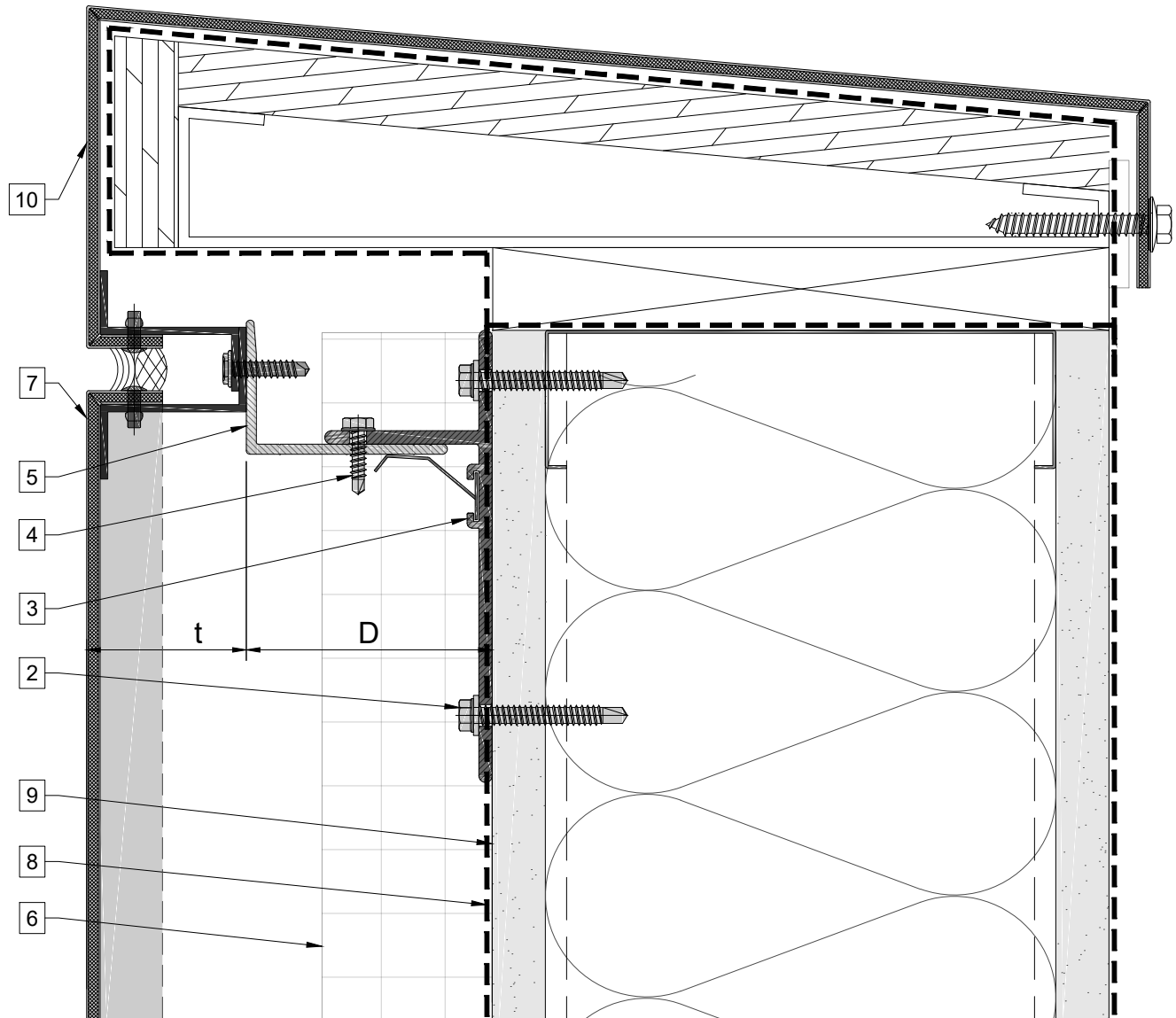
10. ACM coping
11. Window sill

D - System depth

t - ACM panel system thickness

* Ventilation will vary based on insulation depth.

** Minimum ventilation requirement should be qualified by panel manufacturer.



Legend

1. Steel stud (16 GA typical)
2. Perimeter anchor
3. Alpha H wall bracket
4. st/st self-drilling screw $\frac{3}{16} \times \frac{3}{4}$ "
5. Horizontal L-profile (T-profile optional)
6. Insulation
7. ACM panel system
8. A/V barrier
9. Exterior wall

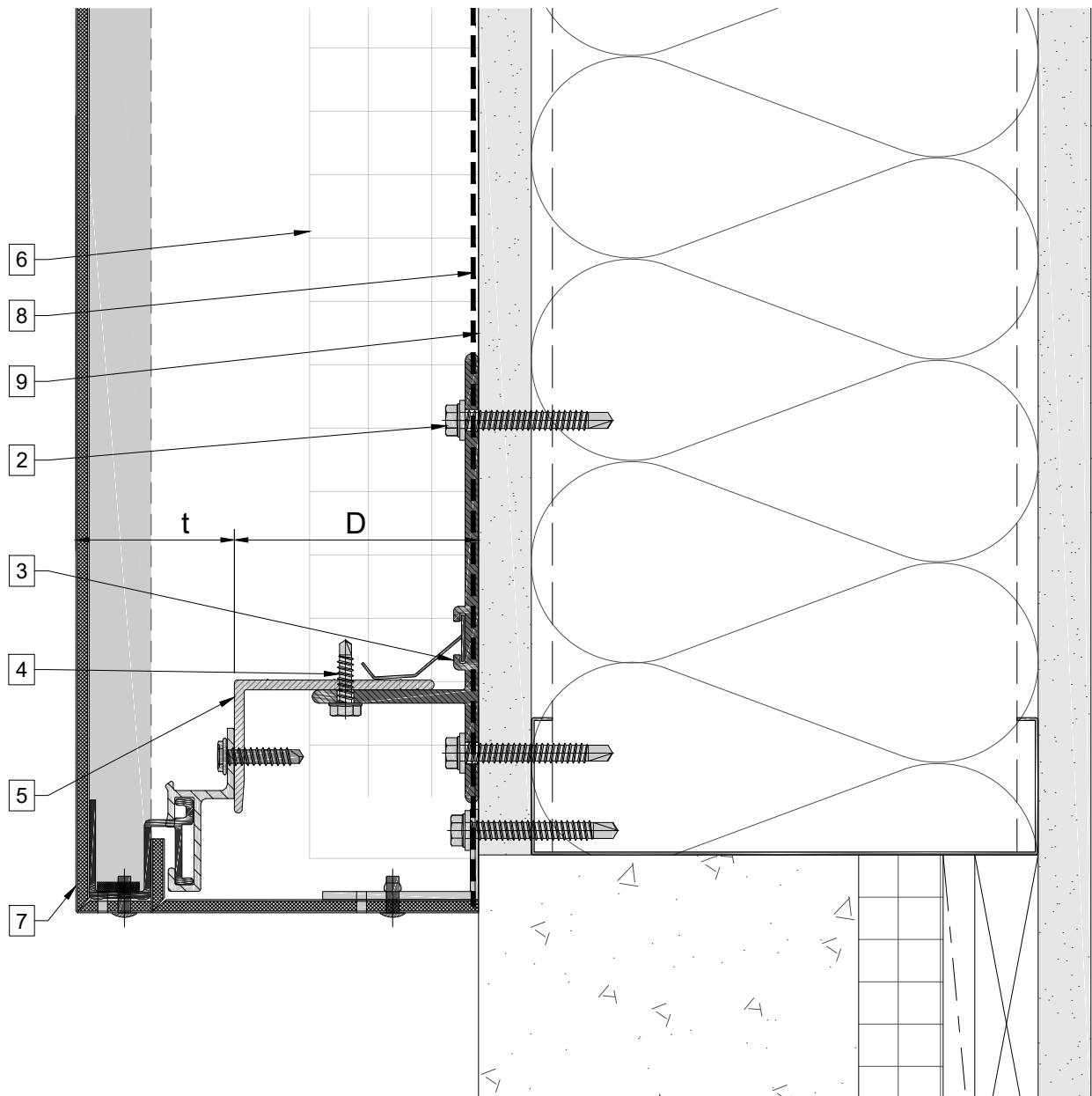
10. ACM coping
11. Window sill

D - System depth

t - ACM panel system thickness

* Ventilation will vary based on insulation depth.

** Minimum ventilation requirement should be qualified by panel manufacturer.



Legend

1. Steel stud (16 GA typical)
2. Perimeter anchor
3. Alpha H wall bracket
4. st/st self-drilling screw $\frac{3}{16} \times \frac{3}{4}$ "
5. Horizontal L-profile (T-profile optional)
6. Insulation
7. ACM panel system
8. A/V barrier
9. Exterior wall

10. ACM coping
11. Window sill

D - System depth

t - ACM panel system thickness

* Ventilation will vary based on insulation depth.

** Minimum ventilation requirement should be qualified by panel manufacturer.