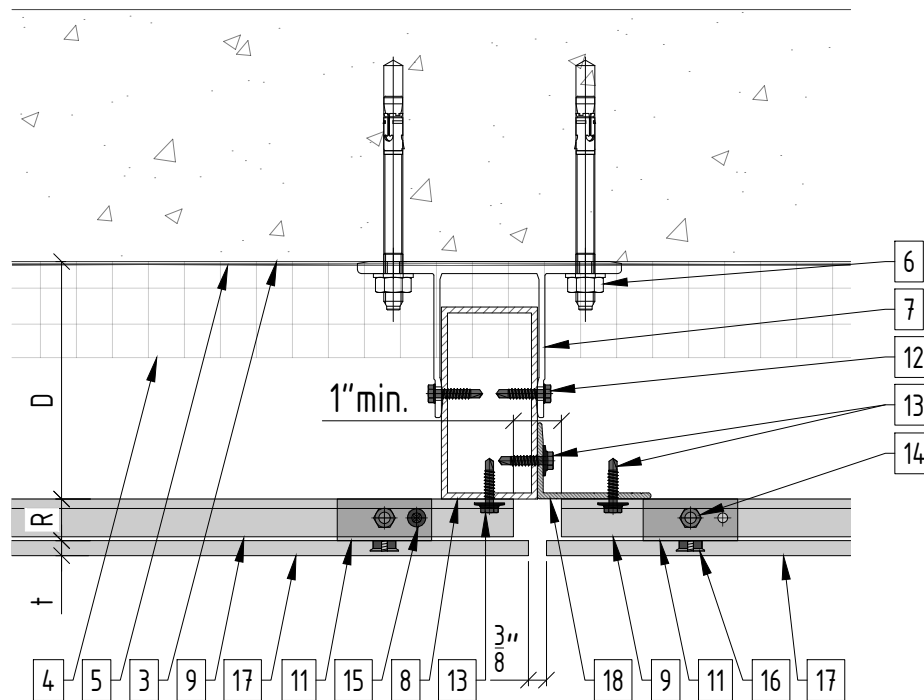


Bracket	Tube	min. D system depth	max. D system depth	R	t
E325.8	4"x2"	4 ¹ / ₄ " (109mm)	5 ³ / ₄ " (146mm)	7 ⁷ / ₈ " (22mm)	5 ⁵ / ₁₆ " (8mm)
	5"x2"	5 ¹ / ₄ " (134mm)	6 ³ / ₄ " (171mm)	7 ⁷ / ₈ " (22mm)	5 ⁵ / ₁₆ " (8mm)
	6"x2"	6 ¹ / ₄ " (160mm)	7 ³ / ₄ " (197mm)	7 ⁷ / ₈ " (22mm)	5 ⁵ / ₁₆ " (8mm)
E525.8	4"x2"	5 ¹ / ₄ " (134mm)	7 ³ / ₄ " (197mm)	7 ⁷ / ₈ " (22mm)	5 ⁵ / ₁₆ " (8mm)
	5"x2"	5 ¹ / ₄ " (134mm)	8 ³ / ₄ " (222mm)	7 ⁷ / ₈ " (22mm)	5 ⁵ / ₁₆ " (8mm)
	6"x2"	6 ¹ / ₄ " (160mm)	9 ³ / ₄ " (248mm)	7 ⁷ / ₈ " (22mm)	5 ⁵ / ₁₆ " (8mm)

Legend			
1. Steel stud (16 GA typical) (NBEC)	10. Non-adjustable clip	19. Alpha V/V+ wall bracket	D - System depth R - Carrier rail t - Panel thickness
2. Exterior wall (NBEC)	11. Adjustable clip	20. St/st self-drilling screw 3/16x3/4"	
3. Min. 8" Concrete slab (NBEC)	12. S.S 6.3mm Dia. EJOT JT3-6 Screw	21. Perforated base closure (NBEC)	
4. Insulation (NBEC)	13. St/st self-drilling screw #14x1	22. Window sill (NBEC)	
5. A/V barrier (NBEC)	14. Leveling bolt M6	23. Perforated window head closure (NBEC)	
6. Perimeter anchor (NBEC)	15. Fixing screw 3/16x1"	24. Coping (NBEC)	
7. Alpha E wall bracket	16. Undercut anchor	25. Window jamb closure (NBEC)	
8. Aluminum tube	17. Fiber cement panel		
9. Horizontal carrier rail	18. L-profile		

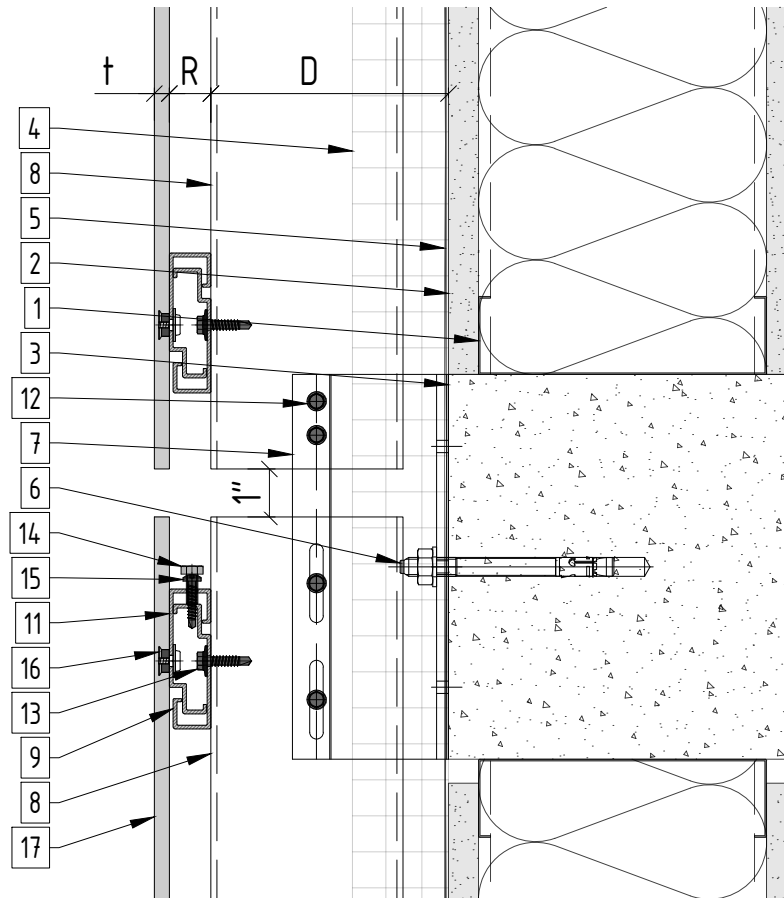
* Ventilation will vary based on insulation depth.

** NBEC - Not by EcoCladding.



Legend			
1. Steel stud (16 GA typical) (NBEC)	10. Non-adjustable clip	19. Alpha V/V+ wall bracket	D - System depth R - Carrier rail t - Panel thickness
2. Exterior wall (NBEC)	11. Adjustable clip	20. St/st self-drilling screw 3/16x3/4"	
3. Min. 8" Concrete slab (NBEC)	12. S.S 6.3mm Dia. EJOT JT3-6 Screw	21. Perforated base closure (NBEC)	
4. Insulation (NBEC)	13. St/st self-drilling screw #14x1	22. Window sill (NBEC)	
5. A/V barrier (NBEC)	14. Leveling bolt M6	23. Perforated window head closure (NBEC)	
6. Perimeter anchor (NBEC)	15. Fixing screw 3/16x1"	24. Coping (NBEC)	
7. Alpha E wall bracket	16. Undercut anchor	25. Window jamb closure (NBEC)	
8. Aluminum tube	17. Fiber cement panel		
9. Horizontal carrier rail	18. L-profile		

* Ventilation will vary based on insulation depth.
 ** NBEC - Not by EcoCladding.



Legend

1. Steel stud (16 GA typical) (NBEC)
2. Exterior wall (NBEC)
3. Min.8" Concrete slab (NBEC)
4. Insulation (NBEC)
5. A/V barrier (NBEC)
6. Perimeter anchor (NBEC)
7. Alpha E wall bracket
8. Aluminum tube
9. Horizontal carrier rail

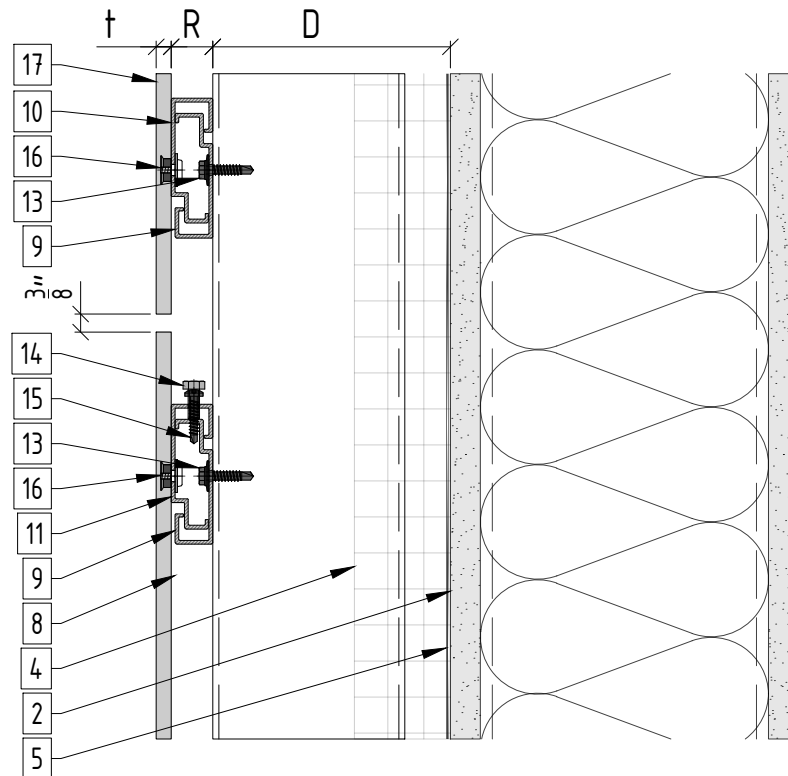
10. Non-adjustable clip
11. Adjustable clip
12. S.S 6.3mm Dia. EJOT JT3-6 Screw
13. St/st self-drilling screw #14x1
14. Leveling bolt M6
15. Fixing screw 3/16x1"
16. Undercut anchor
17. Fiber cement panel
18. L-profile

19. Alpha V/V+ wall bracket
20. St/st self-drilling screw 3/16x3/4"
21. Perforated base closure (NBEC)
22. Window sill (NBEC)
23. Perforated window head closure (NBEC)
24. Coping (NBEC)
25. Window jamb closure (NBEC)

D - System depth
R - Carrier rail
t - Panel thickness

* Ventilation will vary based on insulation depth.

** NBEC - Not by EcoCladding.



Legend

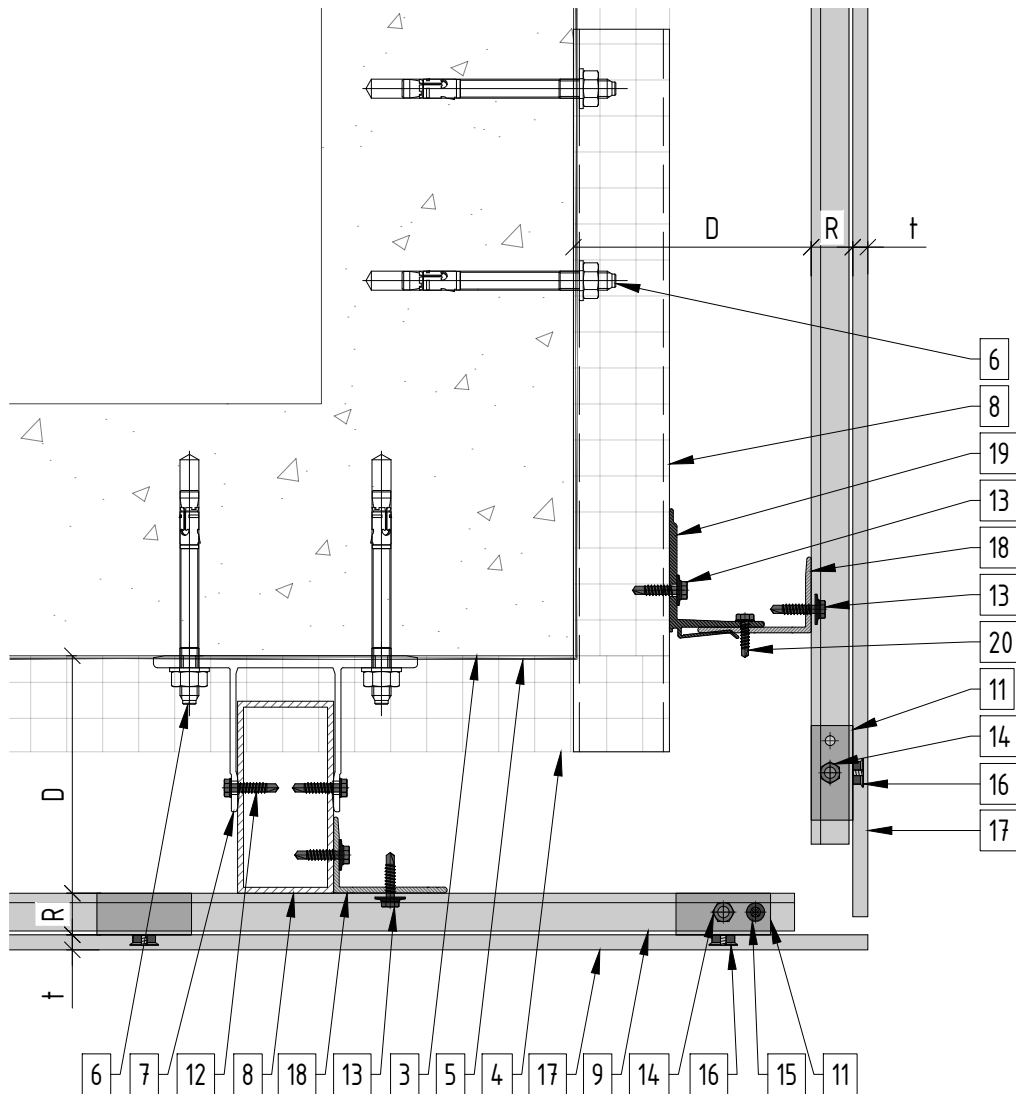
1. Steel stud (16 GA typical) (NBEC)
2. Exterior wall (NBEC)
3. Min.8" Concrete slab (NBEC)
4. Insulation (NBEC)
5. A/V barrier (NBEC)
6. Perimeter anchor (NBEC)
7. Alpha E wall bracket
8. Aluminum tube
9. Horizontal carrier rail

10. Non-adjustable clip
11. Adjustable clip
12. S.S 6.3mm Dia. EJOT JT3-6 Screw
13. St/st self-drilling screw #14x1
14. Leveling bolt M6
15. Fixing screw 3/16x1"
16. Undercut anchor
17. Fiber cement panel
18. L-profile

19. Alpha V/V+ wall bracket
20. St/st self-drilling screw 3/16x3/4"
21. Perforated base closure (NBEC)
22. Window sill (NBEC)
23. Perforated window head closure (NBEC)
24. Coping (NBEC)
25. Window jamb closure (NBEC)

D - System depth
R - Carrier rail
t - Panel thickness

* Ventilation will vary based on insulation depth.
** NBEC - Not by EcoCladding.



Legend

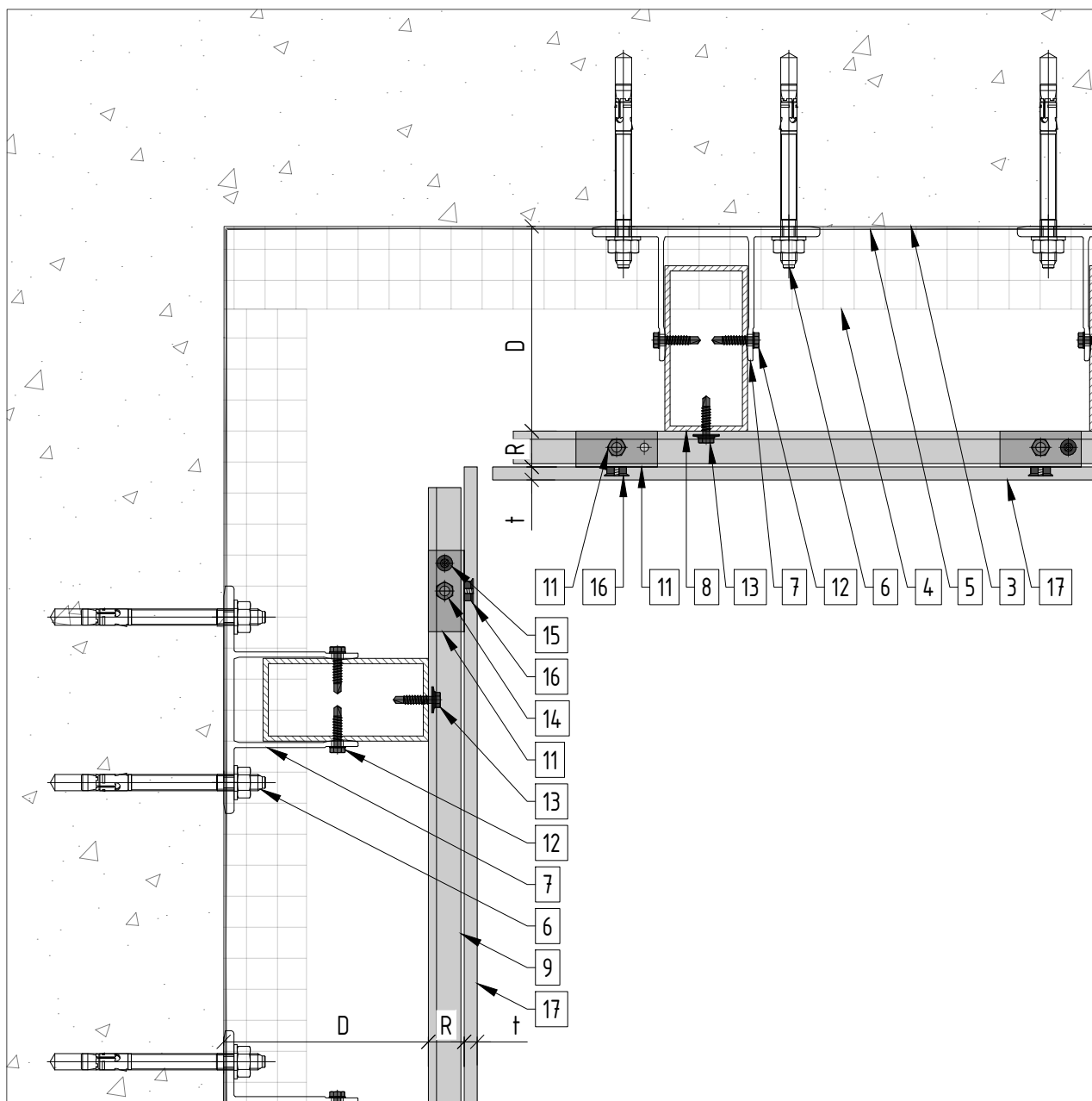
1. Steel stud (16 GA typical) (NBEC)
2. Exterior wall (NBEC)
3. Min. 8" Concrete slab (NBEC)
4. Insulation (NBEC)
5. A/V barrier (NBEC)
6. Perimeter anchor (NBEC)
7. Alpha E wall bracket
8. Aluminum tube
9. Horizontal carrier rail

10. Non-adjustable clip
11. Adjustable clip
12. S.S 6.3mm Dia. EJOT JT3-6 Screw
13. St/st self-drilling screw #14x1
14. Leveling bolt M6
15. Fixing screw 3/16x1"
16. Undercut anchor
17. Fiber cement panel
18. L-profile

19. Alpha V/V+ wall bracket
20. St/st self-drilling screw 3/16x3/4"
21. Perforated base closure (NBEC)
22. Window sill (NBEC)
23. Perforated window head closure (NBEC)
24. Coping (NBEC)
25. Window jamb closure (NBEC)

D - System depth
R - Carrier rail
t - Panel thickness

* Ventilation will vary based on insulation depth.
** NBEC - Not by EcoCladding.



Legend

1. Steel stud (16 GA typical) (NBEC)
2. Exterior wall (NBEC)
3. Min. 8" Concrete slab (NBEC)
4. Insulation (NBEC)
5. A/V barrier (NBEC)
6. Perimeter anchor (NBEC)
7. Alpha E wall bracket
8. Aluminum tube
9. Horizontal carrier rail

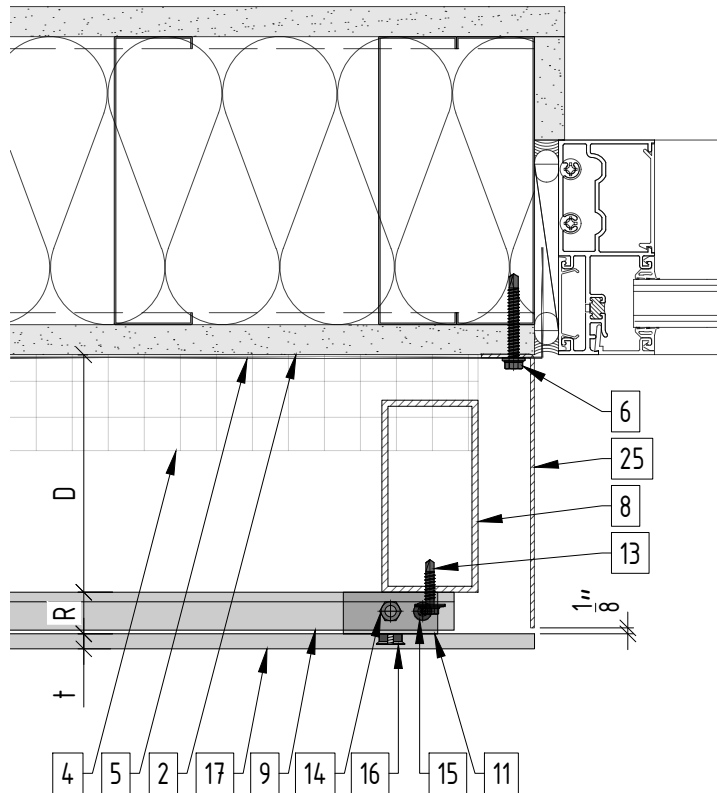
10. Non-adjustable clip
11. Adjustable clip
12. S.S 6.3mm Dia. EJOT JT3-6 Screw
13. St/st self-drilling screw #14x1
14. Leveling bolt M6
15. Fixing screw 3/16x1"
16. Undercut anchor
17. Fiber cement panel
18. L-profile

19. Alpha V/V+ wall bracket
20. St/st self-drilling screw 3/16x3/4"
21. Perforated base closure (NBEC)
22. Window sill (NBEC)
23. Perforated window head closure (NBEC)
24. Coping (NBEC)
25. Window jamb closure (NBEC)

D - System depth
R - Carrier rail
t - Panel thickness

* Ventilation will vary based on insulation depth.

** NBEC - Not by EcoCladding.



Legend

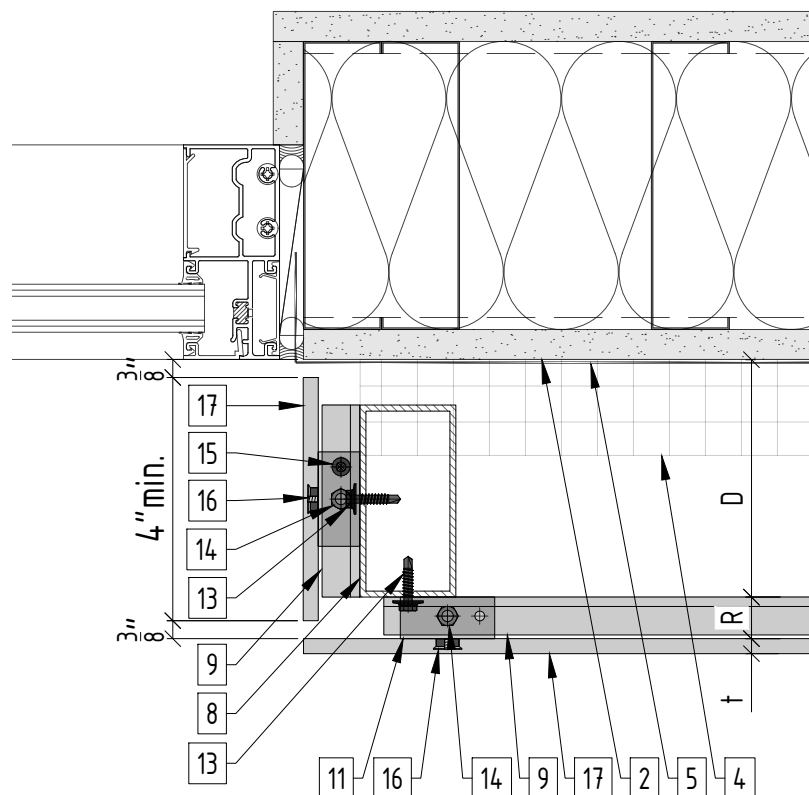
1. Steel stud (16 GA typical) (NBEC)
2. Exterior wall (NBEC)
3. Min.8" Concrete slab (NBEC)
4. Insulation (NBEC)
5. A/V barrier (NBEC)
6. Perimeter anchor (NBEC)
7. Alpha E wall bracket
8. Aluminum tube
9. Horizontal carrier rail

10. Non-adjustable clip
11. Adjustable clip
12. S.S 6.3mm Dia. EJOT JT3-6 Screw
13. St/st self-drilling screw #14x1
14. Leveling bolt M6
15. Fixing screw 3/16x1"
16. Undercut anchor
17. Fiber cement panel
18. L-profile

19. Alpha V/V+ wall bracket
20. St/st self-drilling screw 3/16x3/4"
21. Perforated base closure (NBEC)
22. Window sill (NBEC)
23. Perforated window head closure (NBEC)
24. Coping (NBEC)
25. Window jamb closure (NBEC)

D - System depth
R - Carrier rail
t - Panel thickness

* Ventilation will vary based on insulation depth.
** NBEC - Not by EcoCladding.



Legend

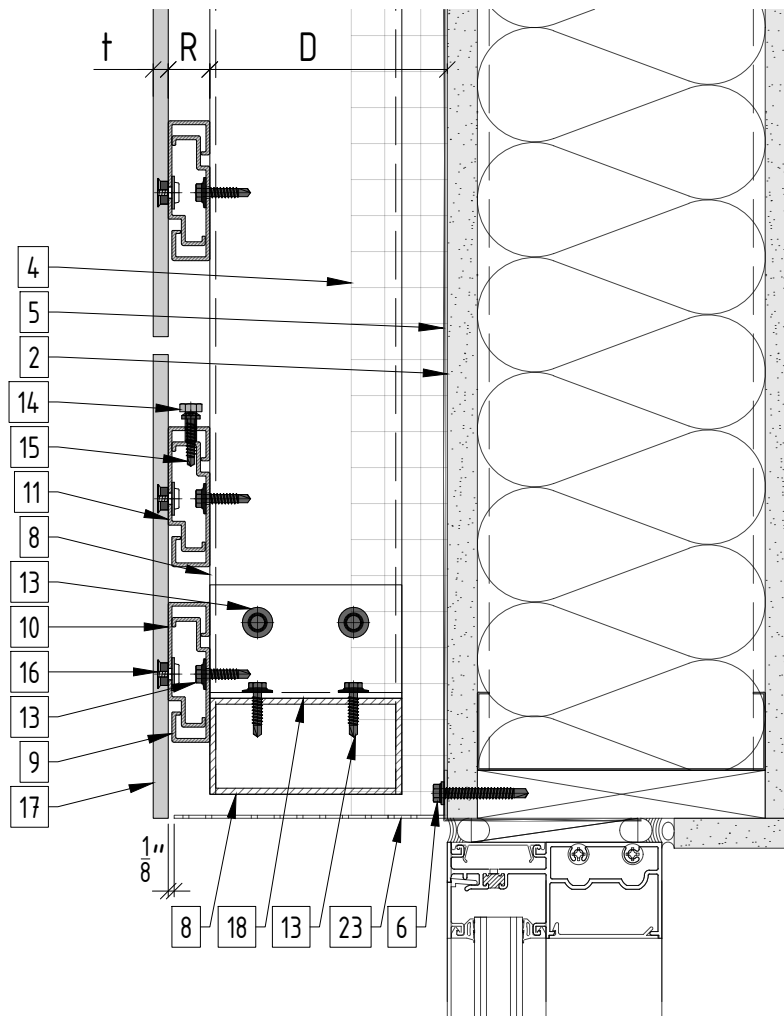
1. Steel stud (16 GA typical) (NBEC)
2. Exterior wall (NBEC)
3. Min.8" Concrete slab (NBEC)
4. Insulation (NBEC)
5. A/V barrier (NBEC)
6. Perimeter anchor (NBEC)
7. Alpha E wall bracket
8. Aluminum tube
9. Horizontal carrier rail

10. Non-adjustable clip
11. Adjustable clip
12. S.S 6.3mm Dia. EJOT JT3-6 Screw
13. St/st self-drilling screw #14x1
14. Leveling bolt M6
15. Fixing screw 3/16x1"
16. Undercut anchor
17. Fiber cement panel
18. L-profile

19. Alpha V/V+ wall bracket
20. St/st self-drilling screw 3/16x3/4"
21. Perforated base closure (NBEC)
22. Window sill (NBEC)
23. Perforated window head closure (NBEC)
24. Coping (NBEC)
25. Window jamb closure (NBEC)

D - System depth
R - Carrier rail
t - Panel thickness

* Ventilation will vary based on insulation depth.
** NBEC - Not by EcoCladding.



Legend

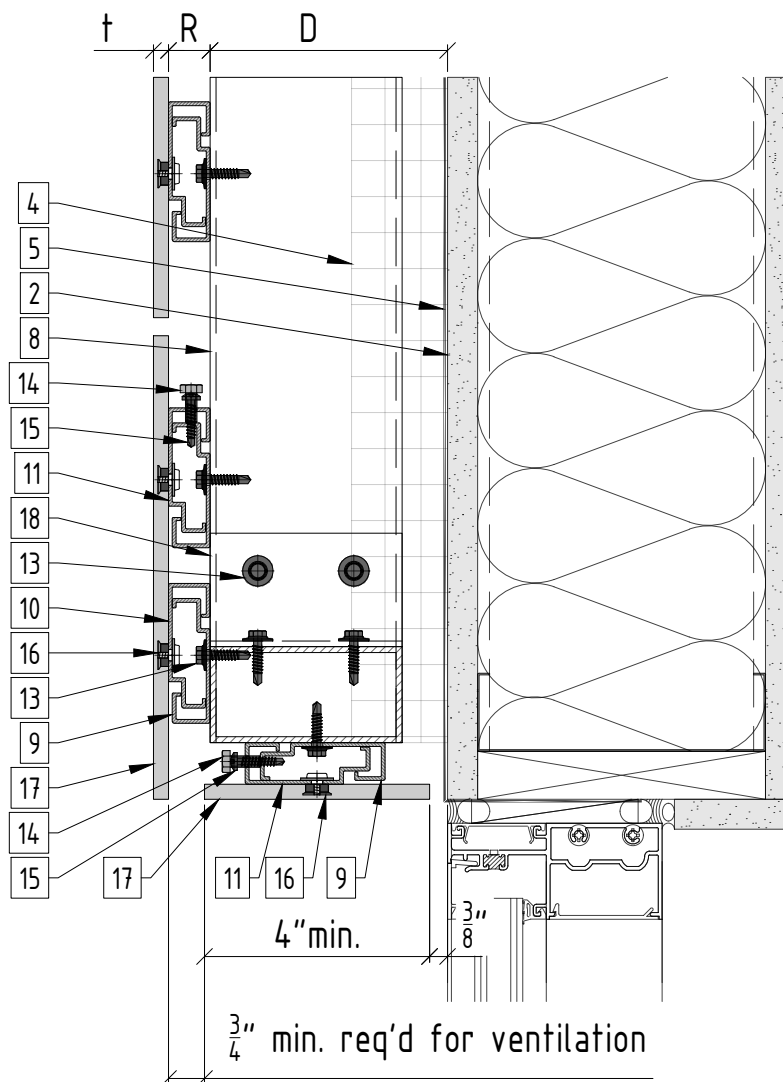
1. Steel stud (16 GA typical) (NBEC)
2. Exterior wall (NBEC)
3. Min.8" Concrete slab (NBEC)
4. Insulation (NBEC)
5. A/V barrier (NBEC)
6. Perimeter anchor (NBEC)
7. Alpha E wall bracket
8. Aluminum tube
9. Horizontal carrier rail

10. Non-adjustable clip
11. Adjustable clip
12. S.S 6.3mm Dia. EJOT JT3-6 Screw
13. St/st self-drilling screw #14x1
14. Leveling bolt M6
15. Fixing screw 3/16x1"
16. Undercut anchor
17. Fiber cement panel
18. L-profile

19. Alpha V/V+ wall bracket
20. St/st self-drilling screw 3/16x3/4"
21. Perforated base closure (NBEC)
22. Window sill (NBEC)
23. Perforated window head closure (NBEC)
24. Coping (NBEC)
25. Window jamb closure (NBEC)

D - System depth
R - Carrier rail
t - Panel thickness

* Ventilation will vary based on insulation depth.
** NBEC - Not by EcoCladding.



Legend

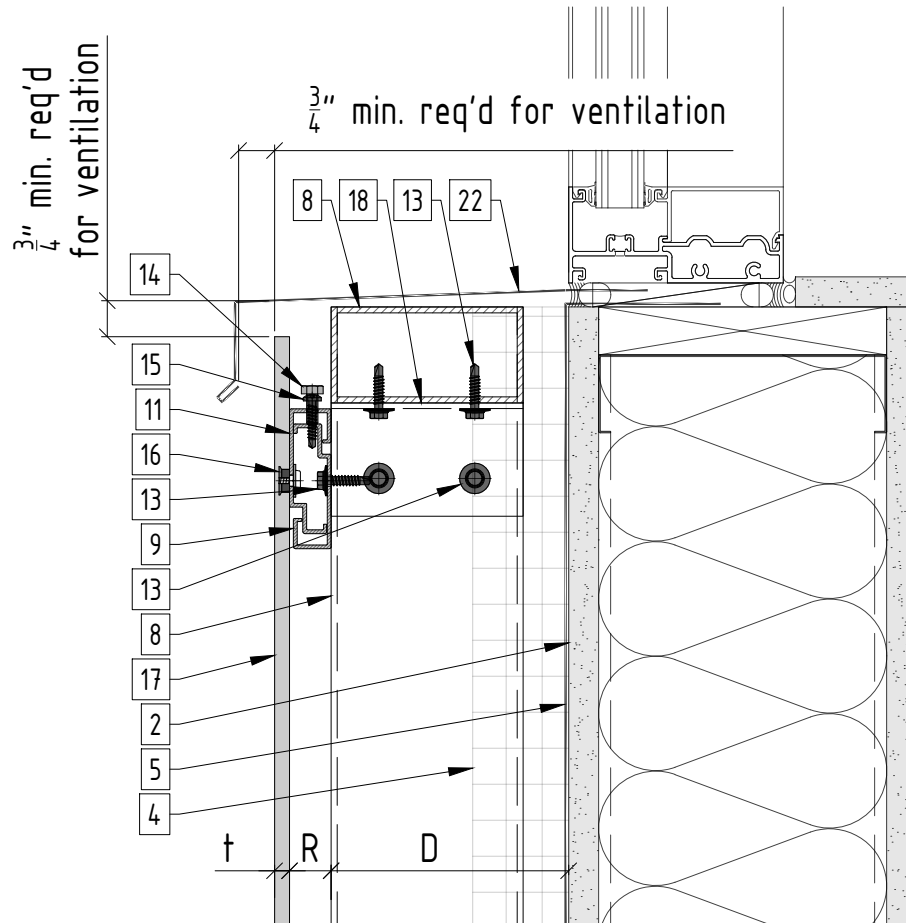
1. Steel stud (16 GA typical) (NBEC)
2. Exterior wall (NBEC)
3. Min.8" Concrete slab (NBEC)
4. Insulation (NBEC)
5. A/V barrier (NBEC)
6. Perimeter anchor (NBEC)
7. Alpha E wall bracket
8. Aluminum tube
9. Horizontal carrier rail

10. Non-adjustable clip
11. Adjustable clip
12. S.S 6.3mm Dia. EJOT JT3-6 Screw
13. St/st self-drilling screw #14x1
14. Leveling bolt M6
15. Fixing screw 3/16x1"
16. Undercut anchor
17. Fiber cement panel
18. L-profile

19. Alpha V/V+ wall bracket
20. St/st self-drilling screw 3/16x3/4"
21. Perforated base closure (NBEC)
22. Window sill (NBEC)
23. Perforated window head closure (NBEC)
24. Coping (NBEC)
25. Window jamb closure (NBEC)

D - System depth
R - Carrier rail
t - Panel thickness

* Ventilation will vary based on insulation depth.
** NBEC - Not by EcoCladding.



Legend

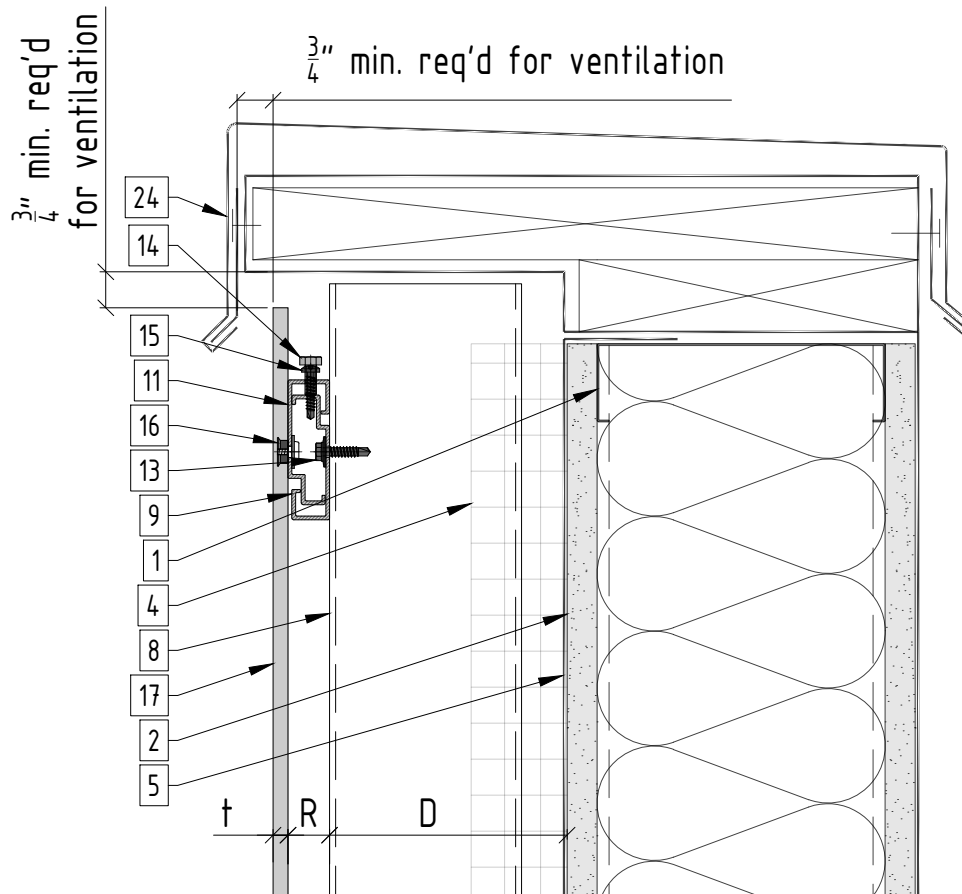
1. Steel stud (16 GA typical) (NBEC)
2. Exterior wall (NBEC)
3. Min.8" Concrete slab (NBEC)
4. Insulation (NBEC)
5. A/V barrier (NBEC)
6. Perimeter anchor (NBEC)
7. Alpha E wall bracket
8. Aluminum tube
9. Horizontal carrier rail

10. Non-adjustable clip
11. Adjustable clip
12. S.S 6.3mm Dia. EJOT JT3-6 Screw
13. St/st self-drilling screw #14x1
14. Leveling bolt M6
15. Fixing screw 3/16x1"
16. Undercut anchor
17. Fiber cement panel
18. L-profile

19. Alpha V/V+ wall bracket
20. St/st self-drilling screw 3/16x3/4"
21. Perforated base closure (NBEC)
22. Window sill (NBEC)
23. Perforated window head closure (NBEC)
24. Coping (NBEC)
25. Window jamb closure (NBEC)

D - System depth
R - Carrier rail
t - Panel thickness

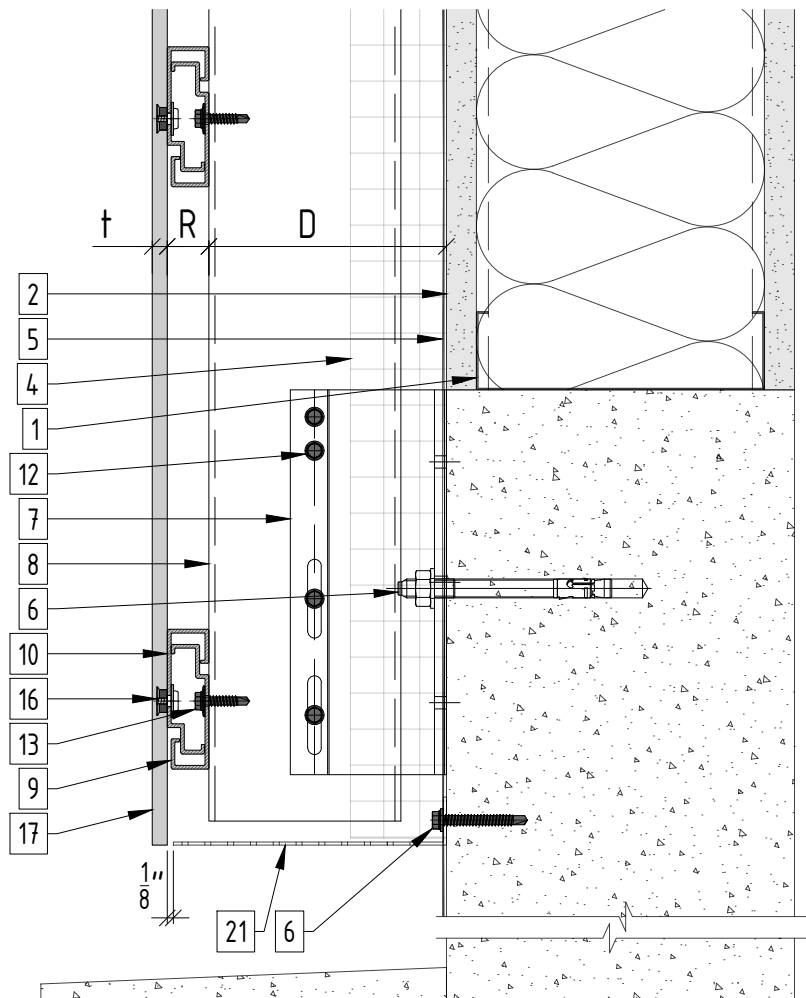
* Ventilation will vary based on insulation depth.
** NBEC - Not by EcoCladding.



Legend			
1. Steel stud (16 GA typical) (NBEC)	10. Non-adjustable clip	19. Alpha V/V+ wall bracket	D - System depth R - Carrier rail t - Panel thickness
2. Exterior wall (NBEC)	11. Adjustable clip	20. St/st self-drilling screw 3/16x3/4"	
3. Min. 8" Concrete slab (NBEC)	12. S.S 6.3mm Dia. EJOT JT3-6 Screw	21. Perforated base closure (NBEC)	
4. Insulation (NBEC)	13. St/st self-drilling screw #14x1	22. Window sill (NBEC)	
5. A/V barrier (NBEC)	14. Leveling bolt M6	23. Perforated window head closure (NBEC)	
6. Perimeter anchor (NBEC)	15. Fixing screw 3/16x1"	24. Coping (NBEC)	
7. Alpha E wall bracket	16. Undercut anchor	25. Window jamb closure (NBEC)	
8. Aluminum tube	17. Fiber cement panel		
9. Horizontal carrier rail	18. L-profile		

* Ventilation will vary based on insulation depth.

** NBEC - Not by EcoCladding.



Legend

1. Steel stud (16 GA typical) (NBEC)
2. Exterior wall (NBEC)
3. Min.8" Concrete slab (NBEC)
4. Insulation (NBEC)
5. A/V barrier (NBEC)
6. Perimeter anchor (NBEC)
7. Alpha E wall bracket
8. Aluminum tube
9. Horizontal carrier rail

10. Non-adjustable clip
11. Adjustable clip
12. S.S 6.3mm Dia. EJOT JT3-6 Screw
13. St/st self-drilling screw #14x1
14. Leveling bolt M6
15. Fixing screw 3/16x1"
16. Undercut anchor
17. Fiber cement panel
18. L-profile

19. Alpha V/V+ wall bracket
20. St/st self-drilling screw 3/16x3/4"
21. Perforated base closure (NBEC)
22. Window sill (NBEC)
23. Perforated window head closure (NBEC)
24. Coping (NBEC)
25. Window jamb closure (NBEC)

D - System depth
R - Carrier rail
t - Panel thickness

* Ventilation will vary based on insulation depth.

** NBEC - Not by EcoCladding.