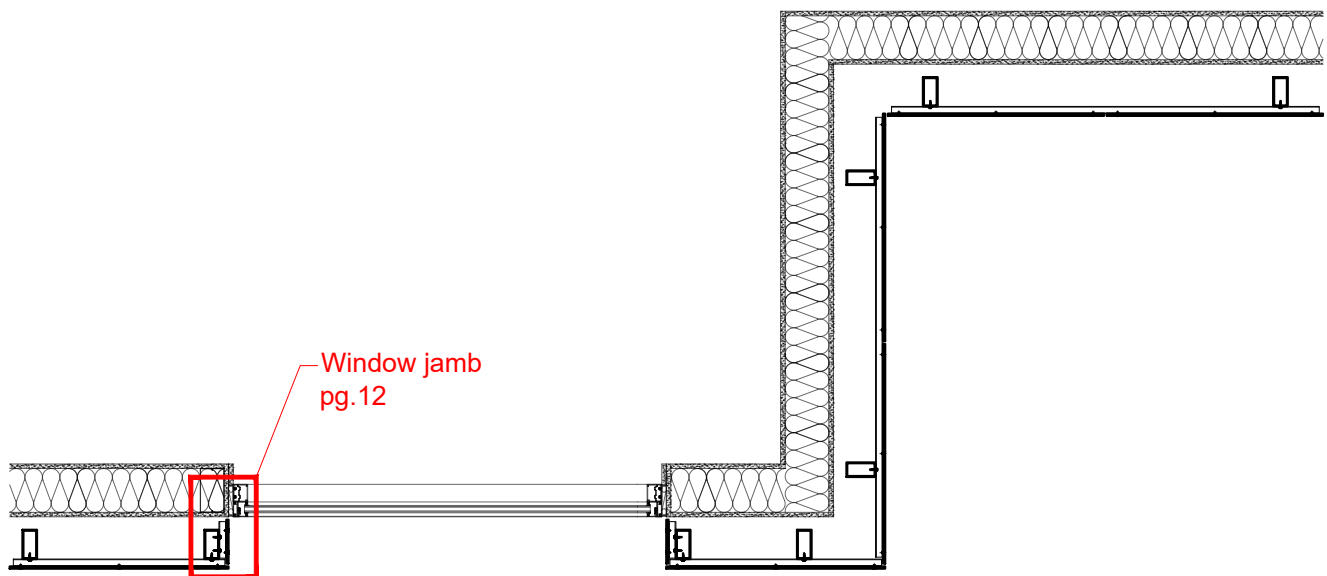
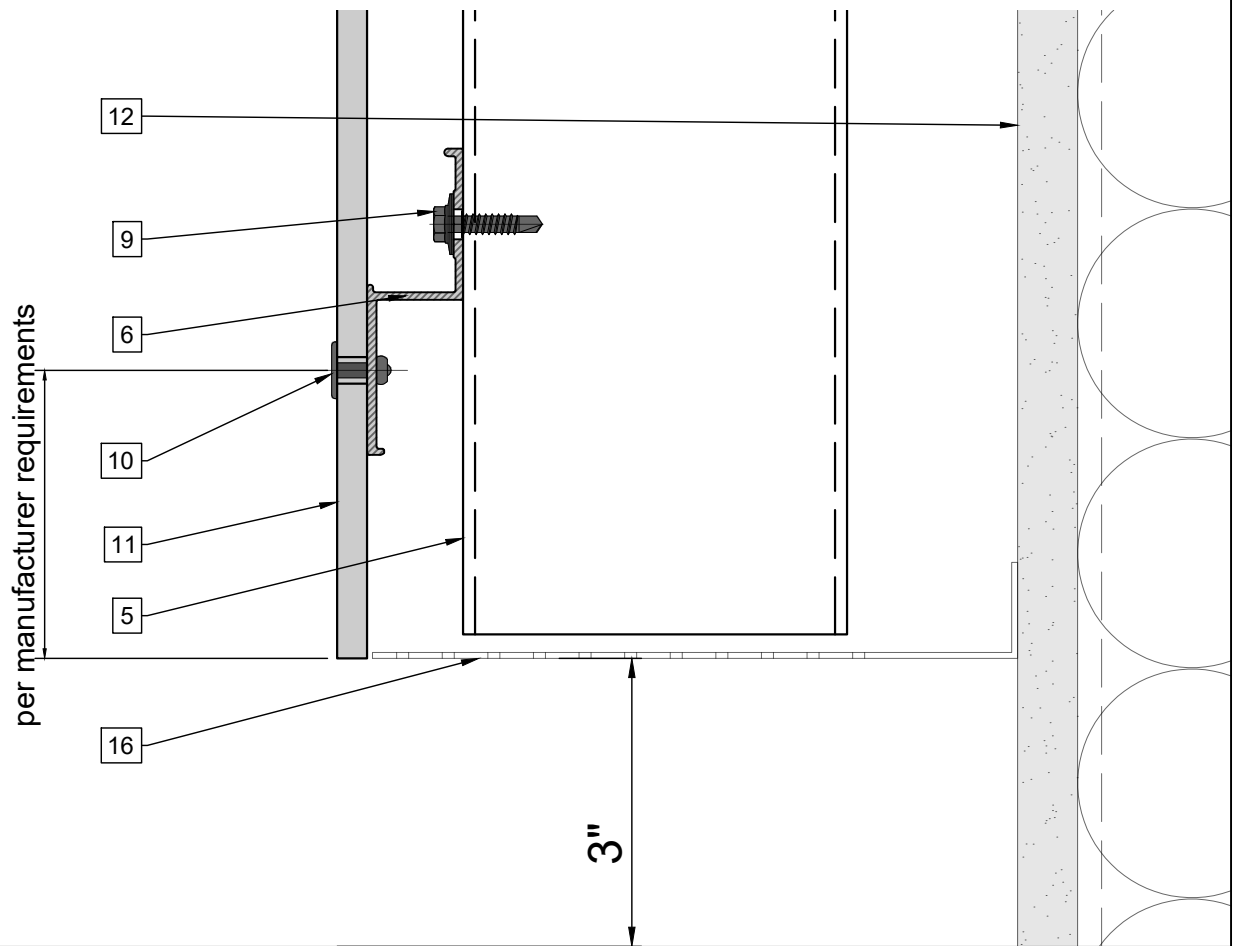


Section A



Section B



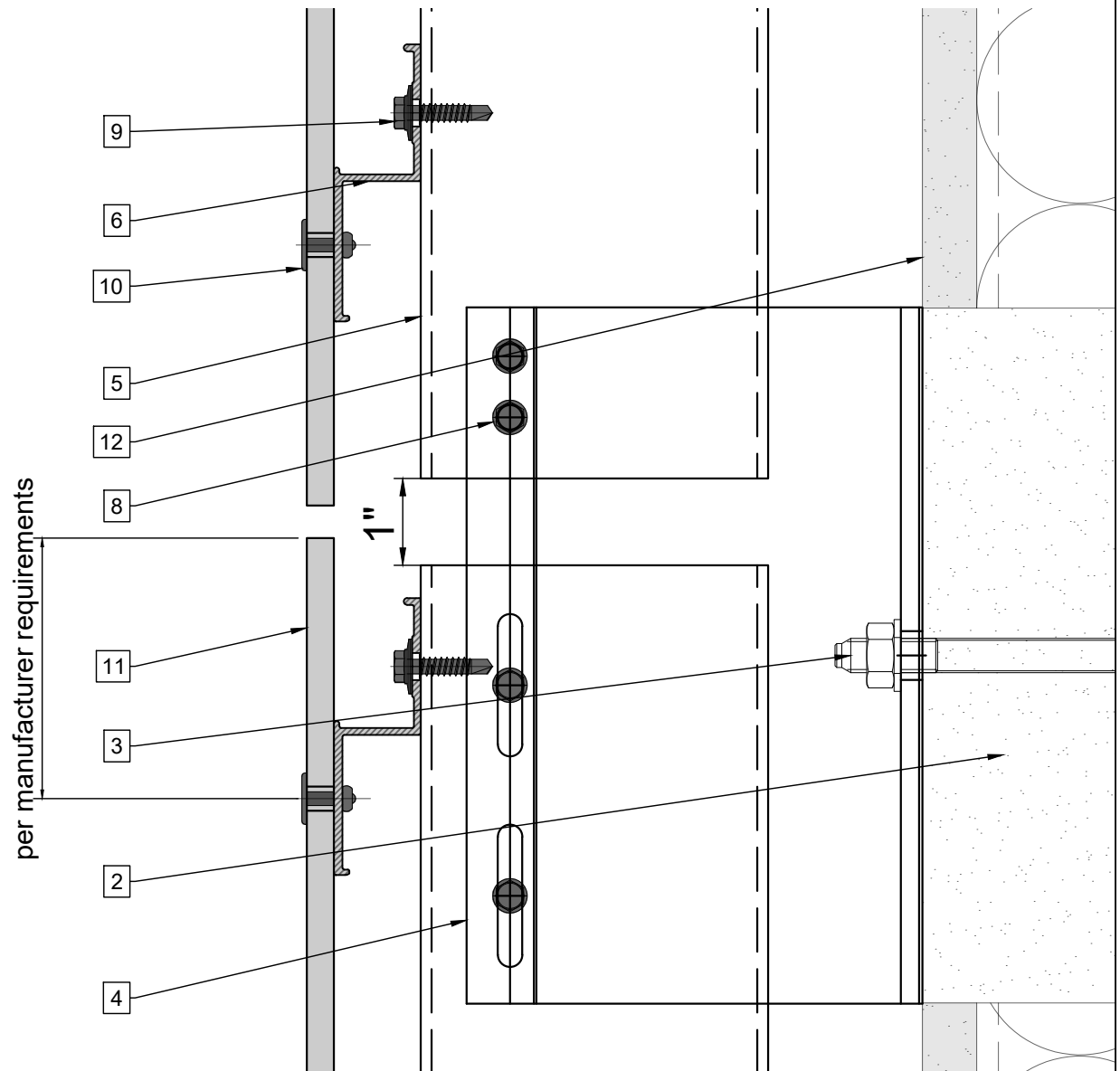
## Legend

1. Steel stud (16 GA typical)
2. Concrete slab (8" min)
3. Perimeter anchor
4. Alpha E wall bracket
5. Aluminum tube
6. Z-profile
7. st/st self-drilling screw  $\frac{3}{16}$ " x  $\frac{3}{4}$ "
8. st/st self-drilling screw #14x1"

9. st/st self-drilling screw #14x3/4"
10. Blind rivet
11. Panel
12. Exterior wall
13. Coping
14. Perforated window head closure
15. Window sill
16. Perforated base closure

\* Ventilation will vary based on insulation depth.

\*\* Minimum ventilation requirement should be qualified by panel manufacturer.

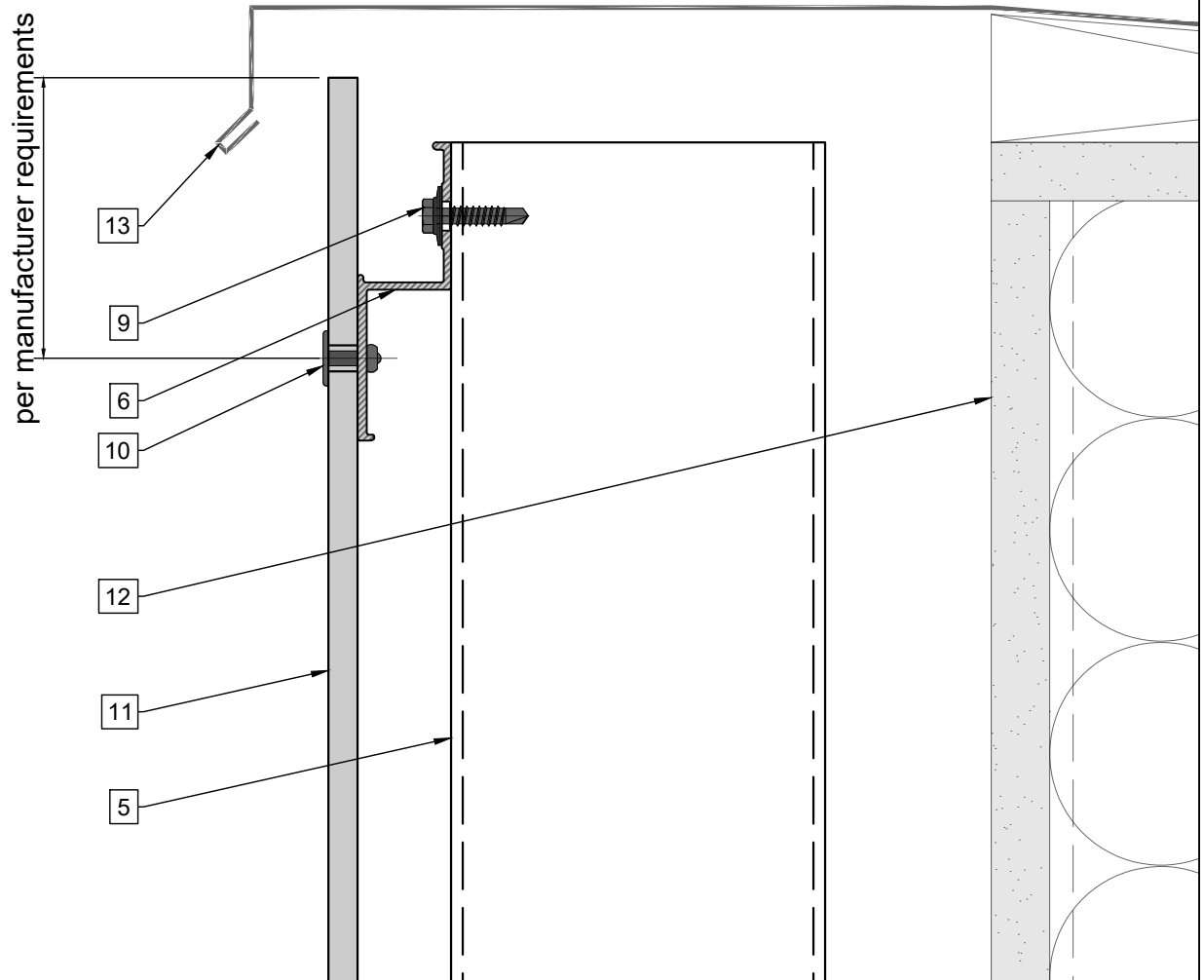


### Legend

- |  |                                       |
|--|---------------------------------------|
| 1. Steel stud (16 GA typical)                                    | 9. st/st self-drilling screw #14x3/4" |
| 2. Concrete slab (8" min)  | 10. Blind rivet                       |
| 3. Perimeter anchor  | 11. Panel                             |
| 4. Alpha E wall bracket  | 12. Exterior wall                     |
| 5. Aluminum tube   | 13. Coping                            |
| 6. Z-profile   | 14. Perforated window head closure    |
| 7. st/st self-drilling screw $\frac{3}{16}" \times \frac{3}{4}"$ | 15. Window sill                       |
| 8. st/st self-drilling screw #14x1"                              | 16. Perforated base closure           |

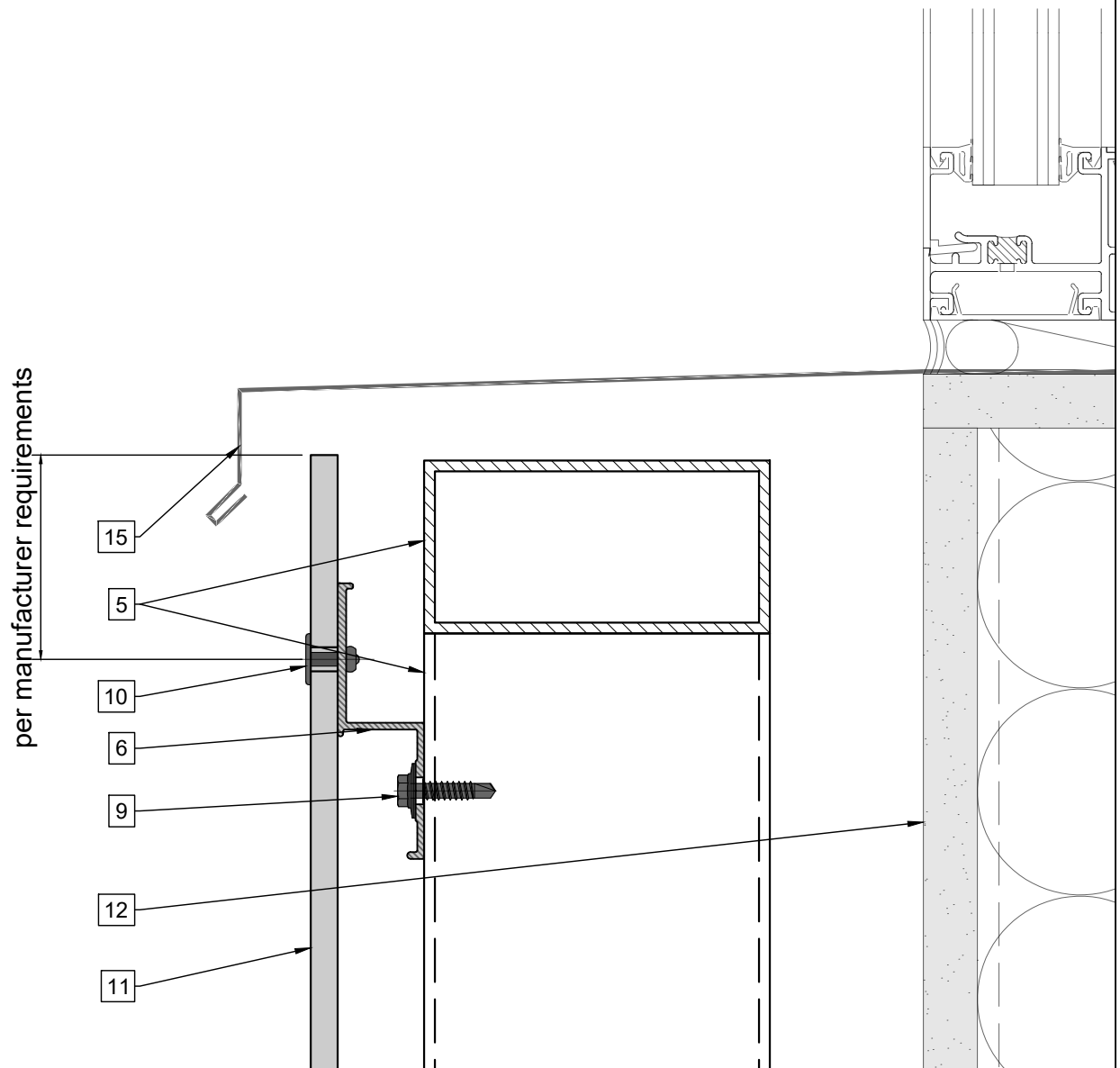
\* Ventilation will vary based on insulation depth.

\*\* Minimum ventilation requirement should be qualified by panel manufacturer.



## Legend

- |  |                                       |   |
|--|---------------------------------------|---|
| 1. Steel stud (16 GA typical)                                    | 9. st/st self-drilling screw #14x3/4" | * Ventilation will vary based on insulation depth.                            |
| 2. Concrete slab (8" min)  | 10. Blind rivet                       | ** Minimum ventilation requirement should be qualified by panel manufacturer. |
| 3. Perimeter anchor  | 11. Panel                             |   |
| 4. Alpha E wall bracket  | 12. Exterior wall                     |   |
| 5. Aluminum tube   | 13. Coping                            |   |
| 6. Z-profile   | 14. Perforated window head closure    |   |
| 7. st/st self-drilling screw $\frac{3}{16}" \times \frac{3}{4}"$ | 15. Window sill                       |   |
| 8. st/st self-drilling screw #14x1"                              | 16. Perforated base closure           |   |



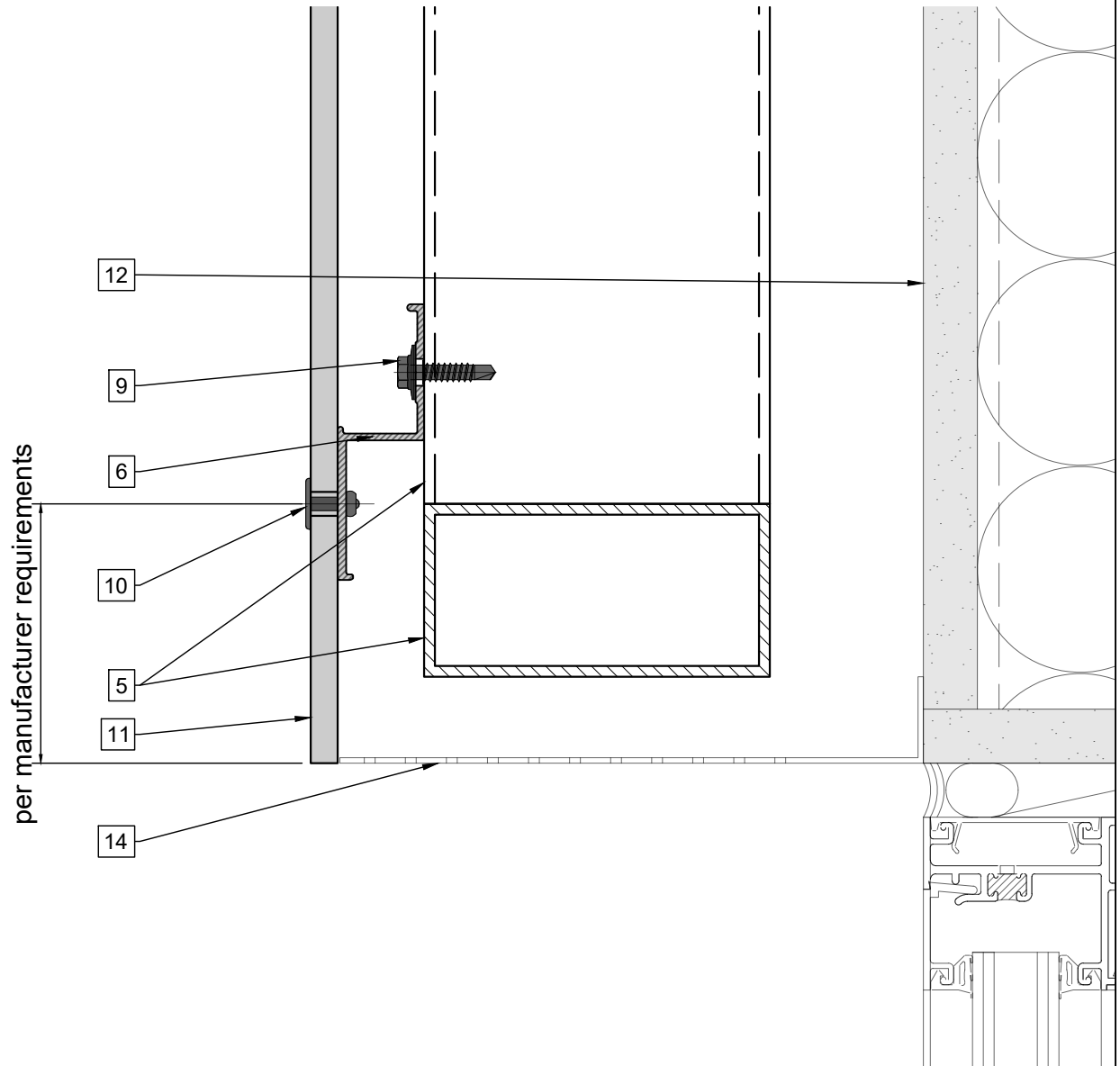
## Legend

1. Steel stud (16 GA typical)
2. Concrete slab (8" min)
3. Perimeter anchor
4. Alpha E wall bracket
5. Aluminum tube
6. Z-profile
7. st/st self-drilling screw  $\frac{3}{16} \times \frac{3}{4}$ "
8. st/st self-drilling screw #14x1"

9. st/st self-drilling screw #14x3/4"
10. Blind rivet
11. Panel
12. Exterior wall
13. Coping
14. Perforated window head closure
15. Window sill
16. Perforated base closure

\* Ventilation will vary based on insulation depth.

\*\* Minimum ventilation requirement should be qualified by panel manufacturer.

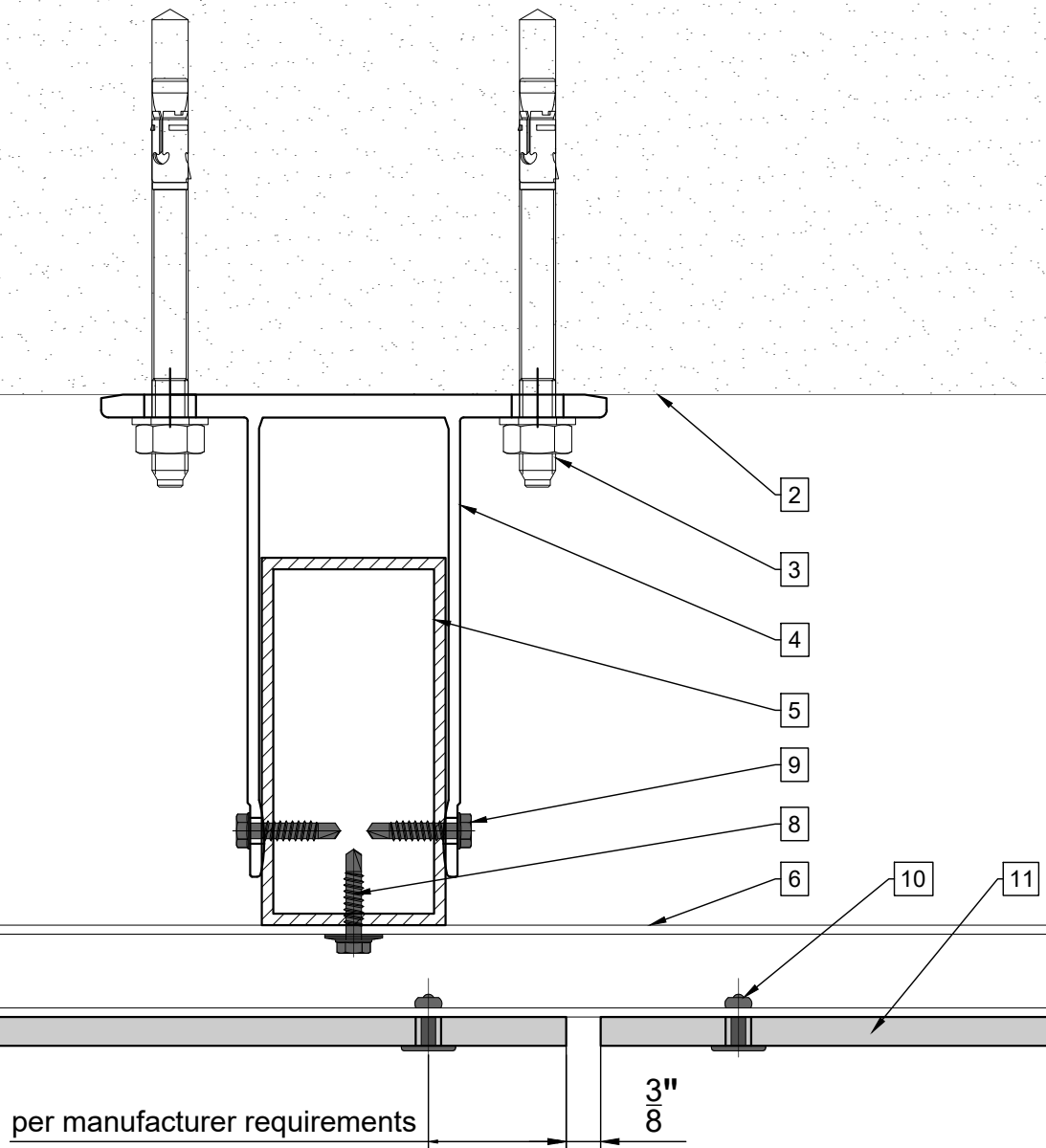


## Legend

- |  |                                       |
|--|---------------------------------------|
| 1. Steel stud (16 GA typical)                                  | 9. st/st self-drilling screw #14x3/4" |
| 2. Concrete slab (8" min)                                      | 10. Blind rivet                       |
| 3. Perimeter anchor  | 11. Panel                             |
| 4. Alpha E wall bracket  | 12. Exterior wall                     |
| 5. Aluminum tube   | 13. Coping                            |
| 6. Z-profile   | 14. Perforated window head closure    |
| 7. st/st self-drilling screw $\frac{3}{16}$ "x $\frac{3}{4}$ " | 15. Window sill                       |
| 8. st/st self-drilling screw #14x1"                            | 16. Perforated base closure           |

\* Ventilation will vary based on insulation depth.

\*\* Minimum ventilation requirement should be qualified by panel manufacturer.



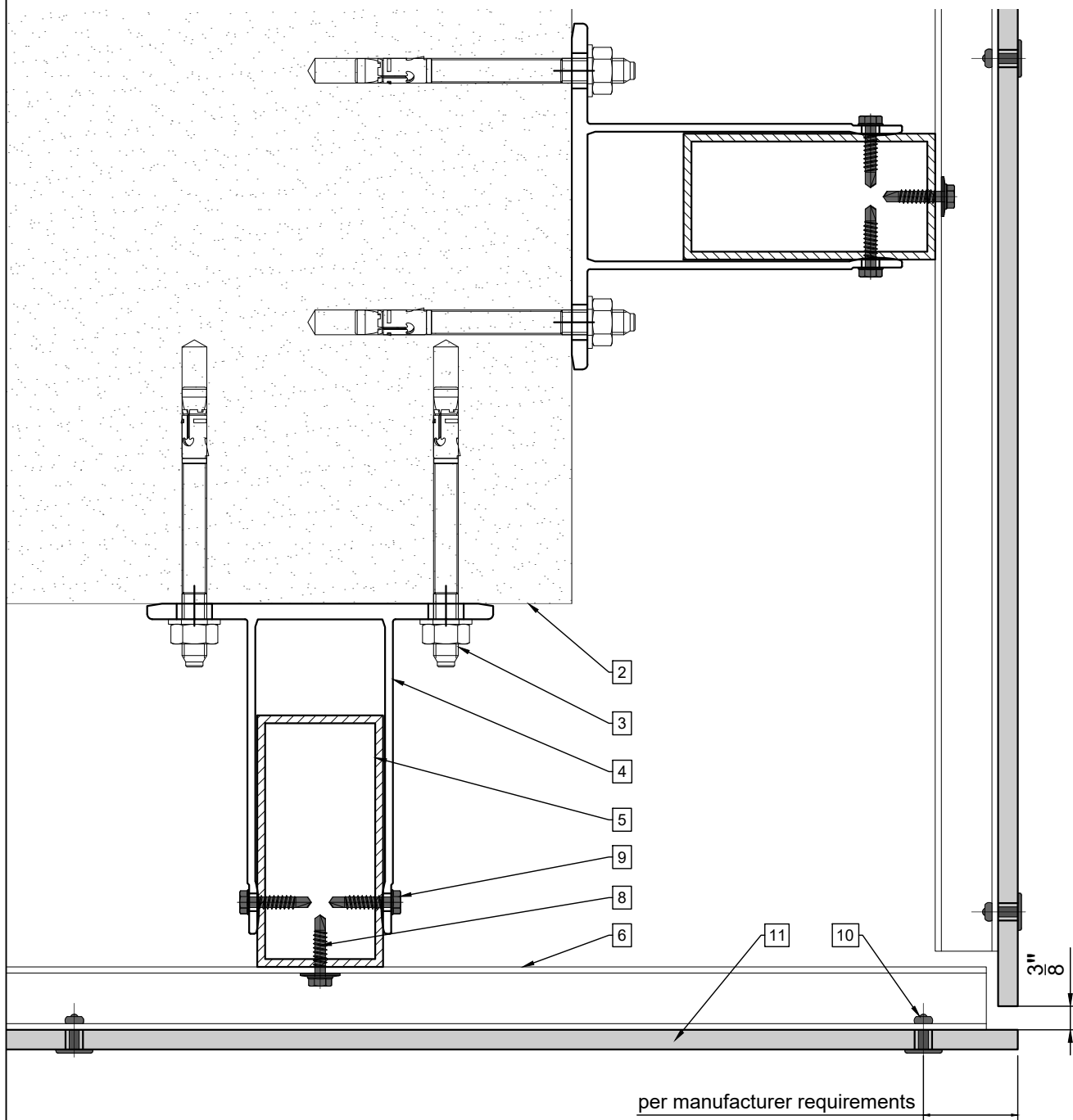
## Legend

1. Steel stud (16 GA typical)
2. Concrete slab (8" min)
3. Perimeter anchor
4. Alpha E wall bracket
5. Aluminum tube
6. Z-profile
7. st/st self-drilling screw  $\frac{3}{16} \times \frac{3}{4}$ "
8. st/st self-drilling screw #14x1"

9. st/st self-drilling screw #14x3/4"
10. Blind rivet
11. Panel
12. Exterior wall
13. Coping
14. Perforated window head closure
15. Window sill
16. Perforated base closure

\* Ventilation will vary based on insulation depth.

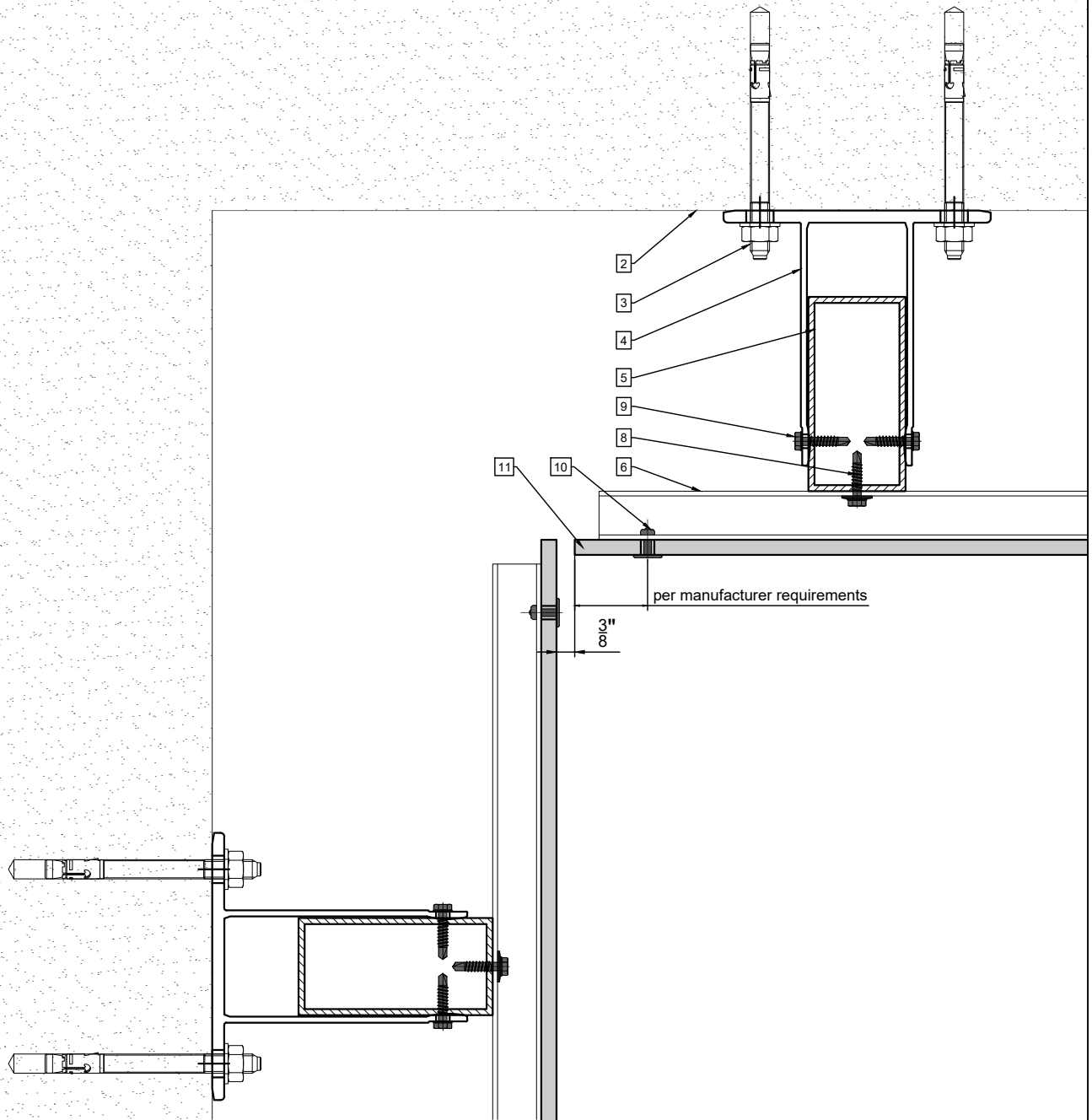
\*\* Minimum ventilation requirement should be qualified by panel manufacturer.



### Legend

- |  |                                       |
|--|---------------------------------------|
| 1. Steel stud (16 GA typical)                                    | 9. st/st self-drilling screw #14x3/4" |
| 2. Concrete slab (8" min)  | 10. Blind rivet                       |
| 3. Perimeter anchor  | 11. Panel                             |
| 4. Alpha E wall bracket  | 12. Exterior wall                     |
| 5. Aluminum tube   | 13. Coping                            |
| 6. Z-profile   | 14. Perforated window head closure    |
| 7. st/st self-drilling screw $\frac{3}{16}" \times \frac{3}{4}"$ | 15. Window sill                       |
| 8. st/st self-drilling screw #14x1"                              | 16. Perforated base closure           |

\* Ventilation will vary based on insulation depth.  
 \*\* Minimum ventilation requirement should be qualified by panel manufacturer.

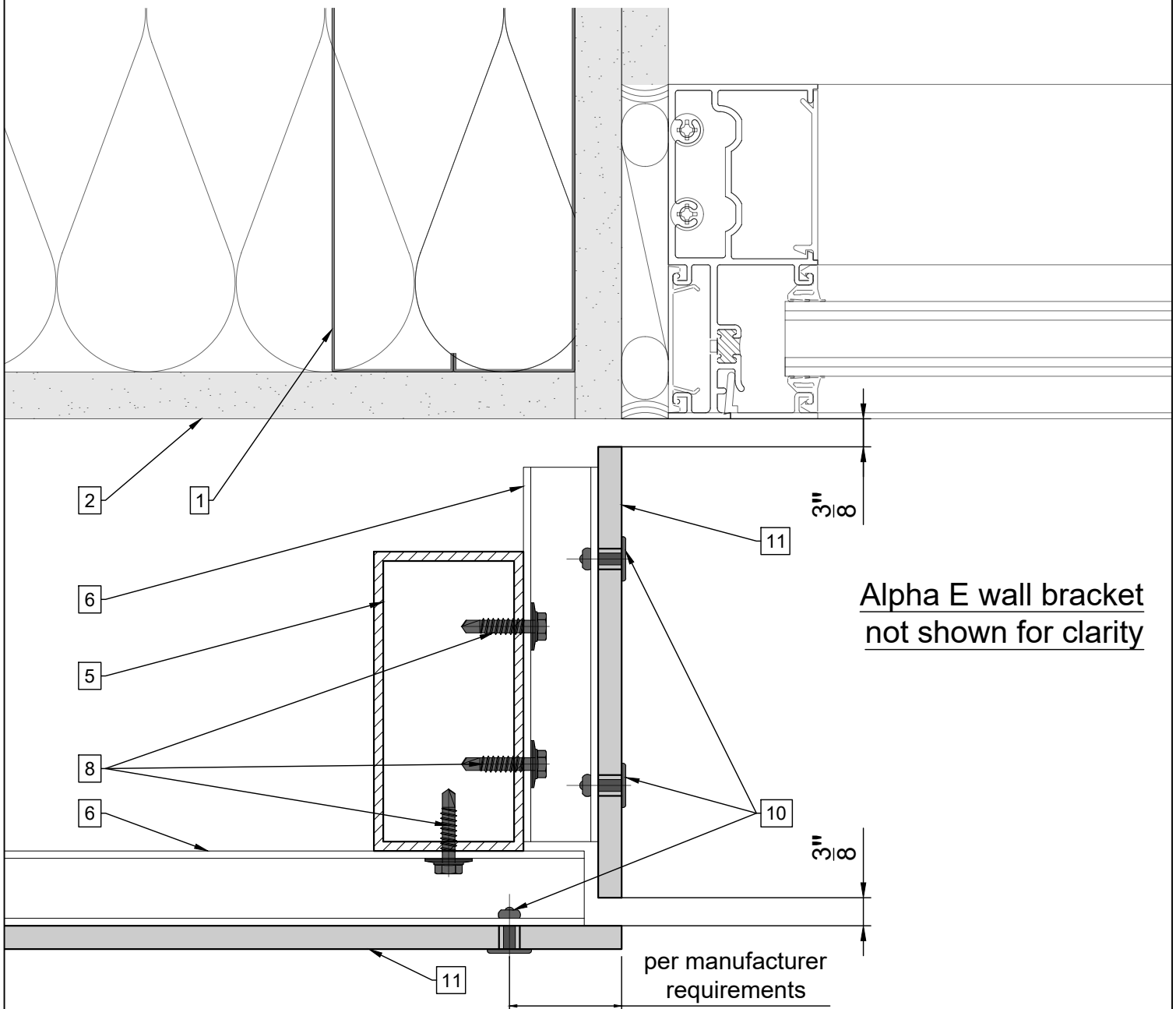


## Legend

- |  |                                       |
|--|---------------------------------------|
| 1. Steel stud (16 GA typical)                                    | 9. st/st self-drilling screw #14x3/4" |
| 2. Concrete slab (8" min)  | 10. Blind rivet                       |
| 3. Perimeter anchor  | 11. Panel                             |
| 4. Alpha E wall bracket  | 12. Exterior wall                     |
| 5. Aluminum tube   | 13. Coping                            |
| 6. Z-profile   | 14. Perforated window head closure    |
| 7. st/st self-drilling screw $\frac{3}{16} \times \frac{3}{4}$ " | 15. Window sill                       |
| 8. st/st self-drilling screw #14x1"                              | 16. Perforated base closure           |

\* Ventilation will vary based on insulation depth.

\*\* Minimum ventilation requirement should be qualified by panel manufacturer.



## Legend

- |  |                                       |   |
|--|---------------------------------------|---|
| 1. Steel stud (16 GA typical)                                    | 9. st/st self-drilling screw #14x3/4" | * Ventilation will vary based on insulation depth.                            |
| 2. Concrete slab (8" min)  | 10. Blind rivet                       | ** Minimum ventilation requirement should be qualified by panel manufacturer. |
| 3. Perimeter anchor  | 11. Panel                             |   |
| 4. Alpha E wall bracket  | 12. Exterior wall                     |   |
| 5. Aluminum tube   | 13. Coping                            |   |
| 6. Z-profile   | 14. Perforated window head closure    |   |
| 7. st/st self-drilling screw $\frac{3}{16}" \times \frac{3}{4}"$ | 15. Window sill                       |   |
| 8. st/st self-drilling screw #14x1"                              | 16. Perforated base closure           |   |