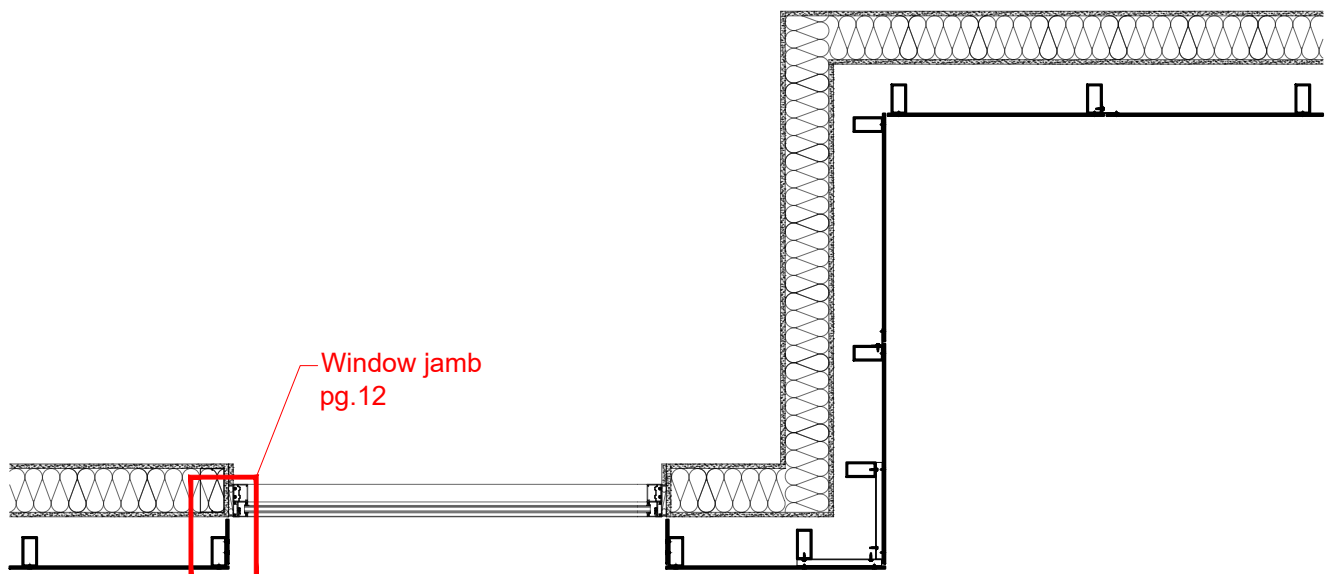
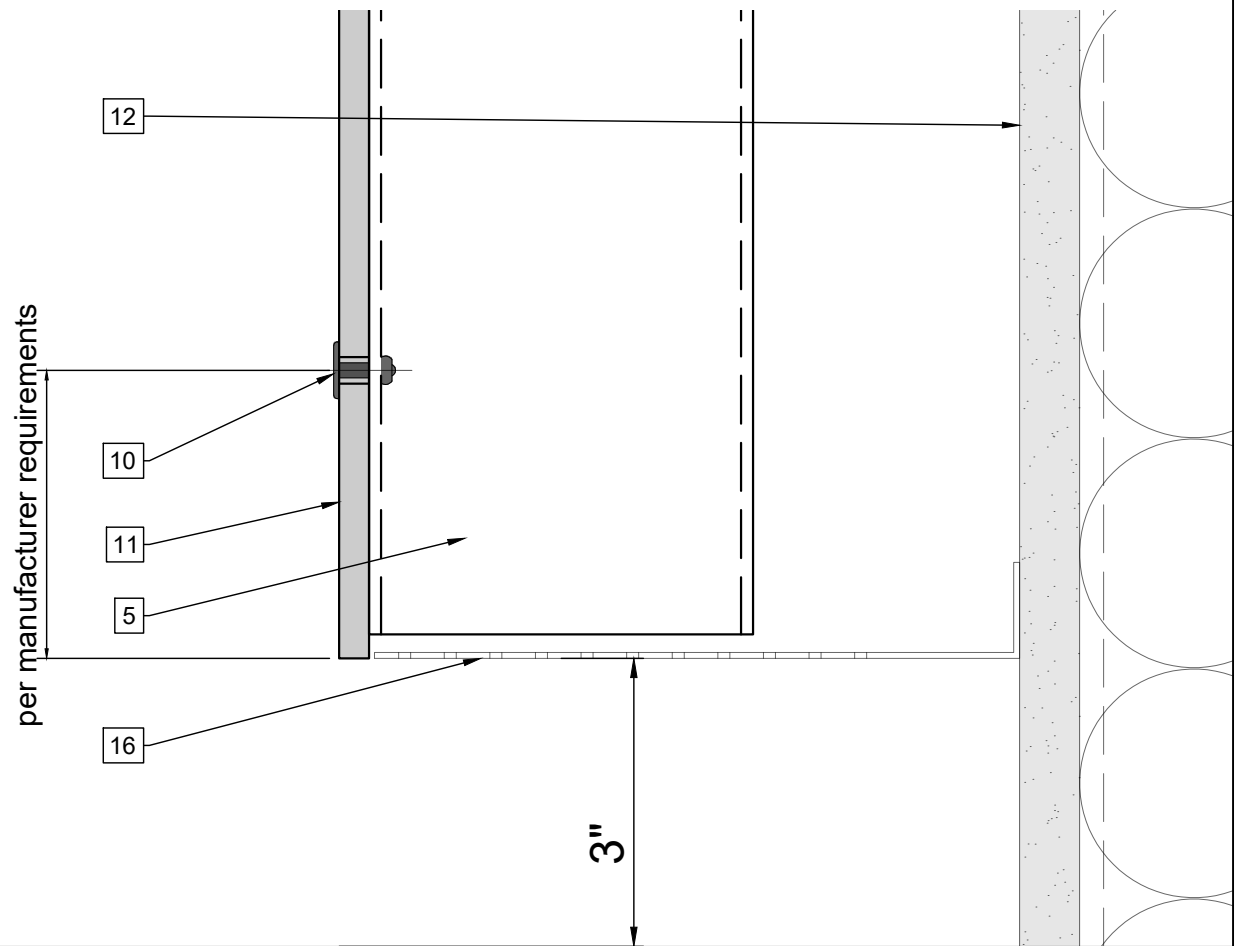


Section A

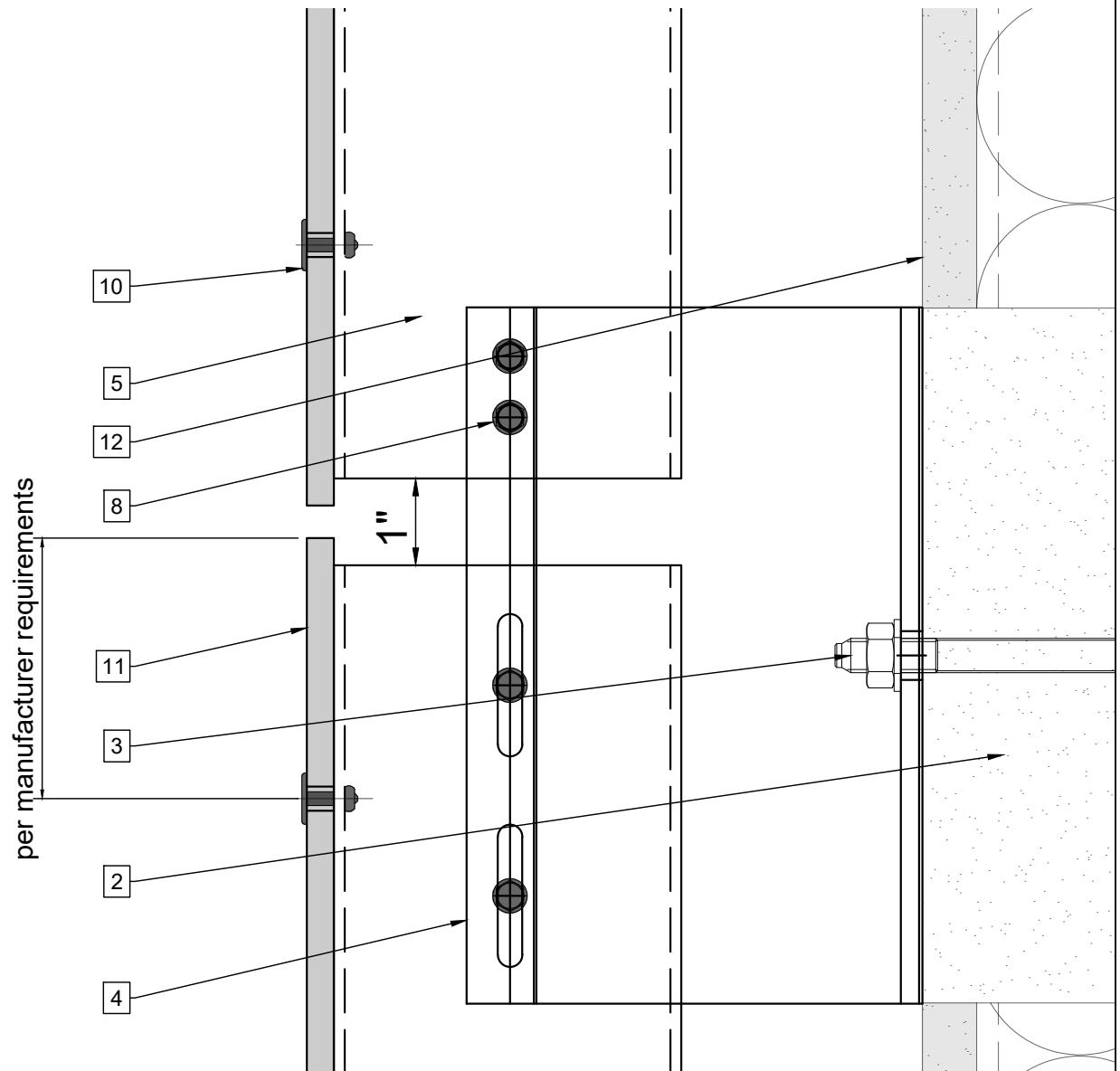


Section B



Legend

- | | | |
|--|---------------------------------------|---|
| 1. Steel stud (16 GA typical) | 9. st/st self-drilling screw #14x3/4" | * Ventilation will vary based on insulation depth. |
| 2. Concrete slab (8" min) | 10. Blind rivet | ** Minimum ventilation requirement should be qualified by panel manufacturer. |
| 3. Perimeter anchor | 11. Panel | |
| 4. Alpha E wall bracket | 12. Exterior wall | |
| 5. Aluminum tube | 13. Coping | |
| 6. Z-profile | 14. Perforated window head closure | |
| 7. st/st self-drilling screw $\frac{3}{16}" \times \frac{3}{4}"$ | 15. Window sill | |
| 8. st/st self-drilling screw #14x1" | 16. Perforated base closure | |
| | 17. Aluminum L-profile | |

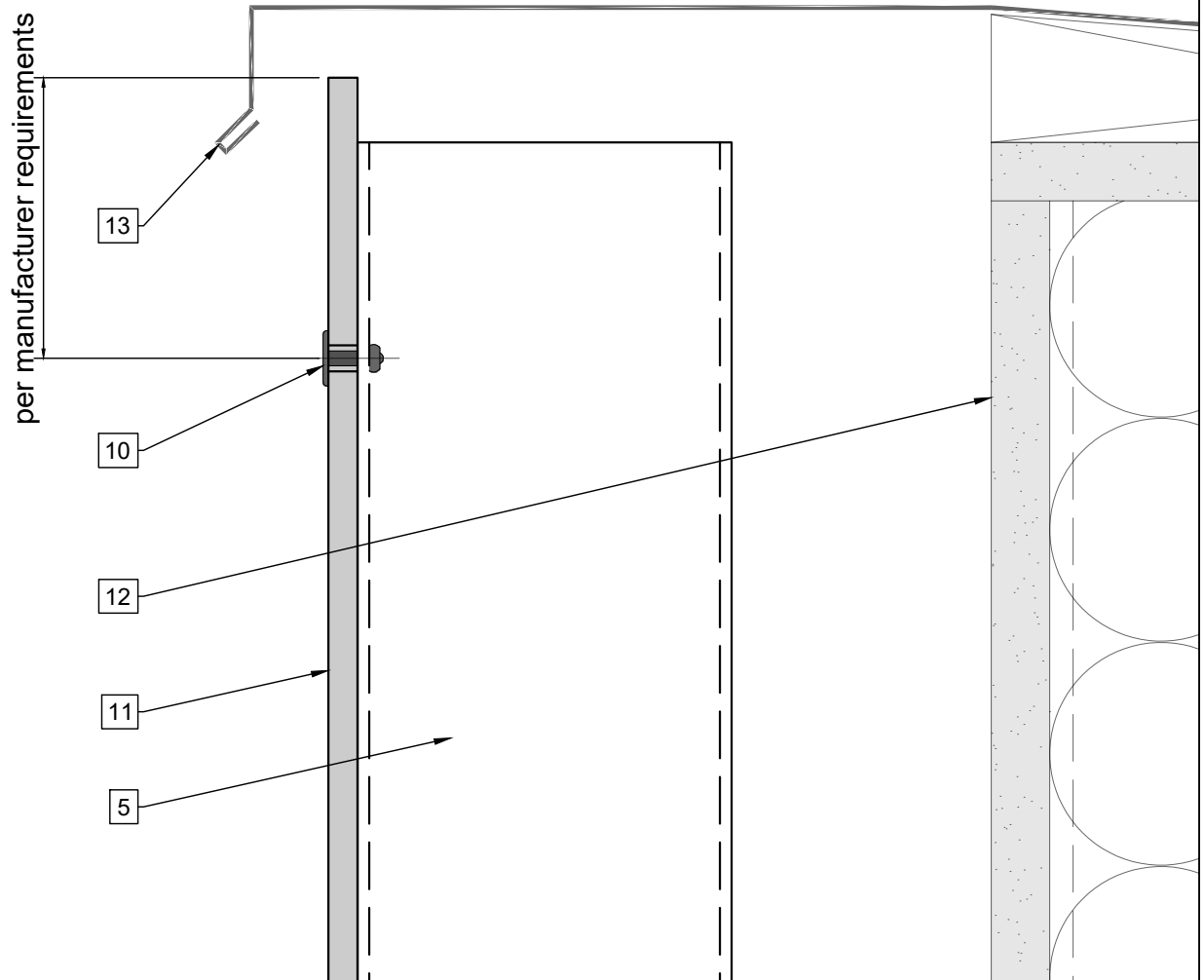


Legend

- | | |
|--|---------------------------------------|
| 1. Steel stud (16 GA typical) | 9. st/st self-drilling screw #14x3/4" |
| 2. Concrete slab (8" min) | 10. Blind rivet |
| 3. Perimeter anchor | 11. Panel |
| 4. Alpha E wall bracket | 12. Exterior wall |
| 5. Aluminum tube | 13. Coping |
| 6. Z-profile | 14. Perforated window head closure |
| 7. st/st self-drilling screw $\frac{3}{16}" \times \frac{3}{4}"$ | 15. Window sill |
| 8. st/st self-drilling screw #14x1" | 16. Perforated base closure |
| | 17. Aluminum L-profile |

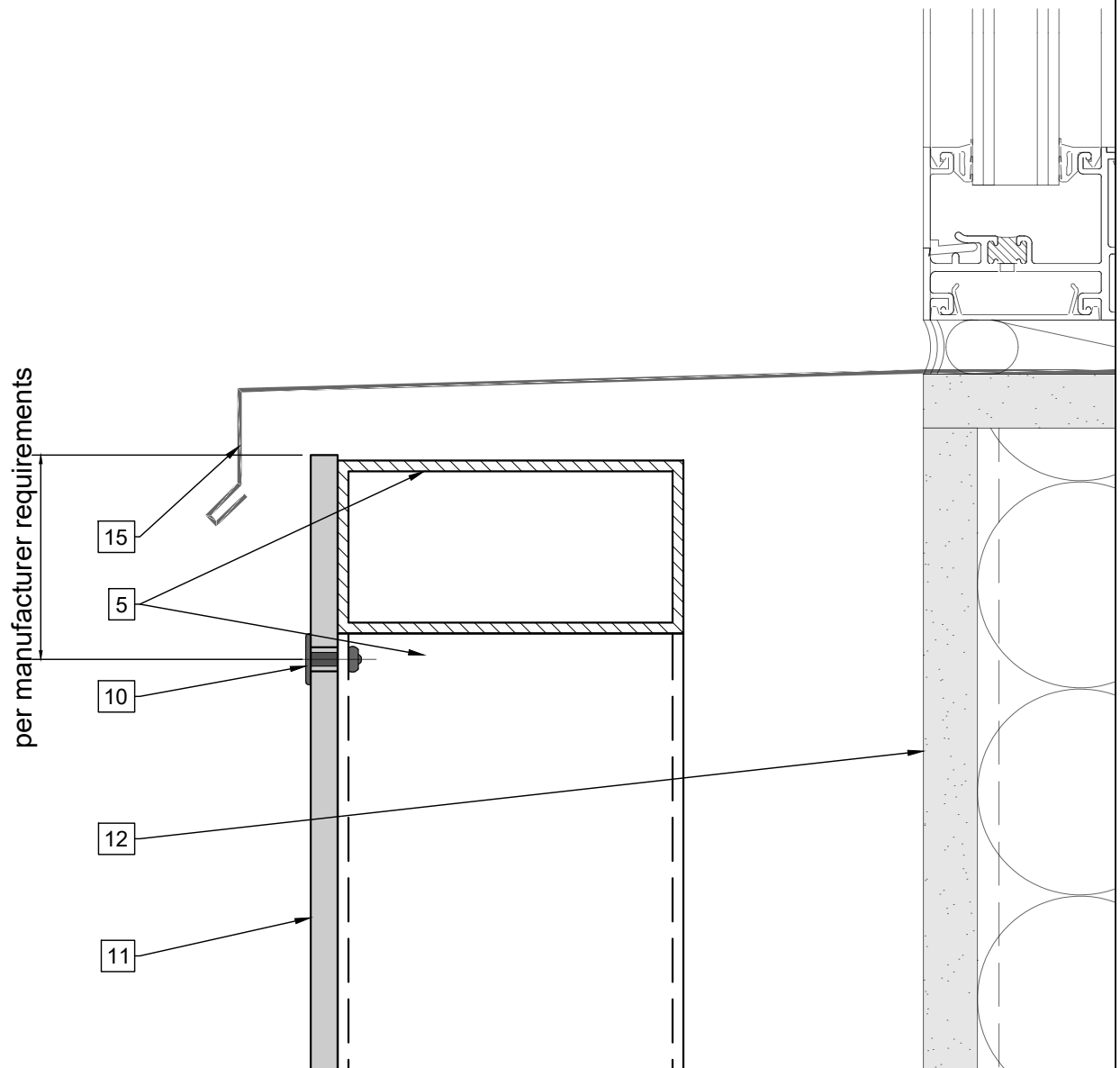
* Ventilation will vary based on insulation depth.

** Minimum ventilation requirement should be qualified by panel manufacturer.



Legend

- | | | |
|--|---------------------------------------|---|
| 1. Steel stud (16 GA typical) | 9. st/st self-drilling screw #14x3/4" | * Ventilation will vary based on insulation depth. |
| 2. Concrete slab (8" min) | 10. Blind rivet | ** Minimum ventilation requirement should be qualified by panel manufacturer. |
| 3. Perimeter anchor | 11. Panel | |
| 4. Alpha E wall bracket | 12. Exterior wall | |
| 5. Aluminum tube | 13. Coping | |
| 6. Z-profile | 14. Perforated window head closure | |
| 7. st/st self-drilling screw $\frac{3}{16}" \times \frac{3}{4}"$ | 15. Window sill | |
| 8. st/st self-drilling screw #14x1" | 16. Perforated base closure | |
| | 17. Aluminum L-profile | |



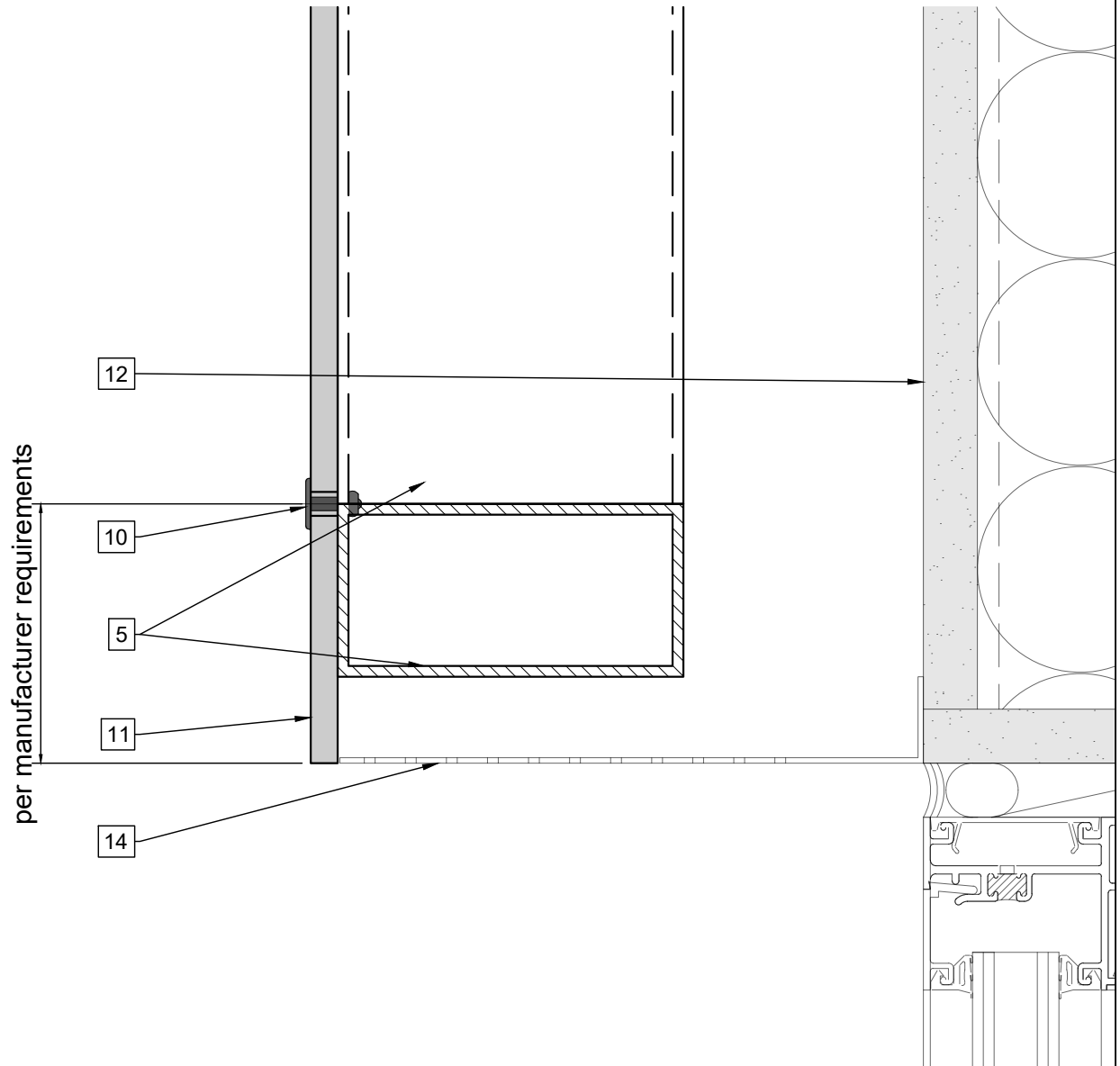
Legend

1. Steel stud (16 GA typical)
2. Concrete slab (8" min)
3. Perimeter anchor
4. Alpha E wall bracket
5. Aluminum tube
6. Z-profile
7. st/st self-drilling screw $\frac{3}{16}" \times \frac{3}{4}"$
8. st/st self-drilling screw #14x1"

9. st/st self-drilling screw #14x3/4"
10. Blind rivet
11. Panel
12. Exterior wall
13. Coping
14. Perforated window head closure
15. Window sill
16. Perforated base closure
17. Aluminum L-profile

* Ventilation will vary based on insulation depth.

** Minimum ventilation requirement should be qualified by panel manufacturer.

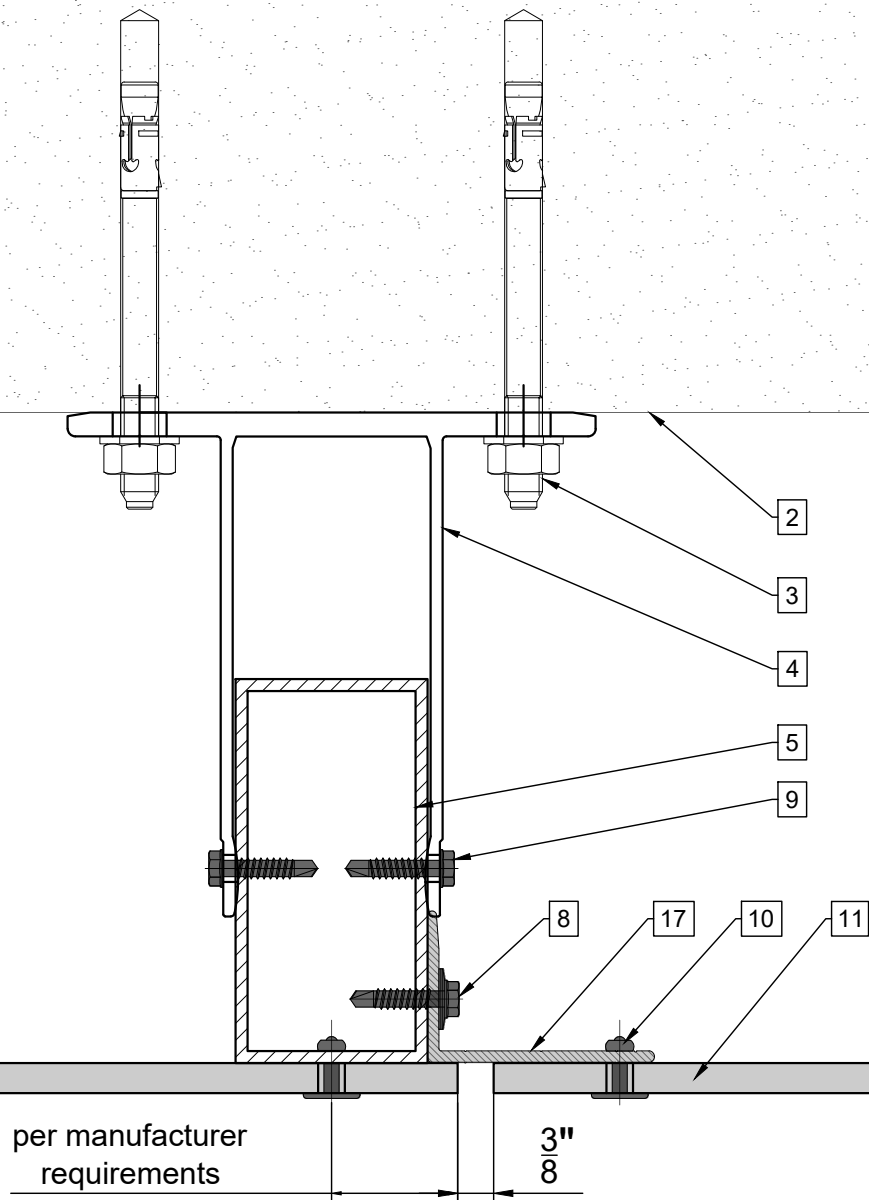


Legend

- | | |
|---|---------------------------------------|
| 1. Steel stud (16 GA typical) | 9. st/st self-drilling screw #14x3/4" |
| 2. Concrete slab (8" min) | 10. Blind rivet |
| 3. Perimeter anchor | 11. Panel |
| 4. Alpha E wall bracket | 12. Exterior wall |
| 5. Aluminum tube | 13. Coping |
| 6. Z-profile | 14. Perforated window head closure |
| 7. st/st self-drilling screw $\frac{3}{16}$ " x $\frac{3}{4}$ " | 15. Window sill |
| 8. st/st self-drilling screw #14x1" | 16. Perforated base closure |
| | 17. Aluminum L-profile |

* Ventilation will vary based on insulation depth.

** Minimum ventilation requirement should be qualified by panel manufacturer.



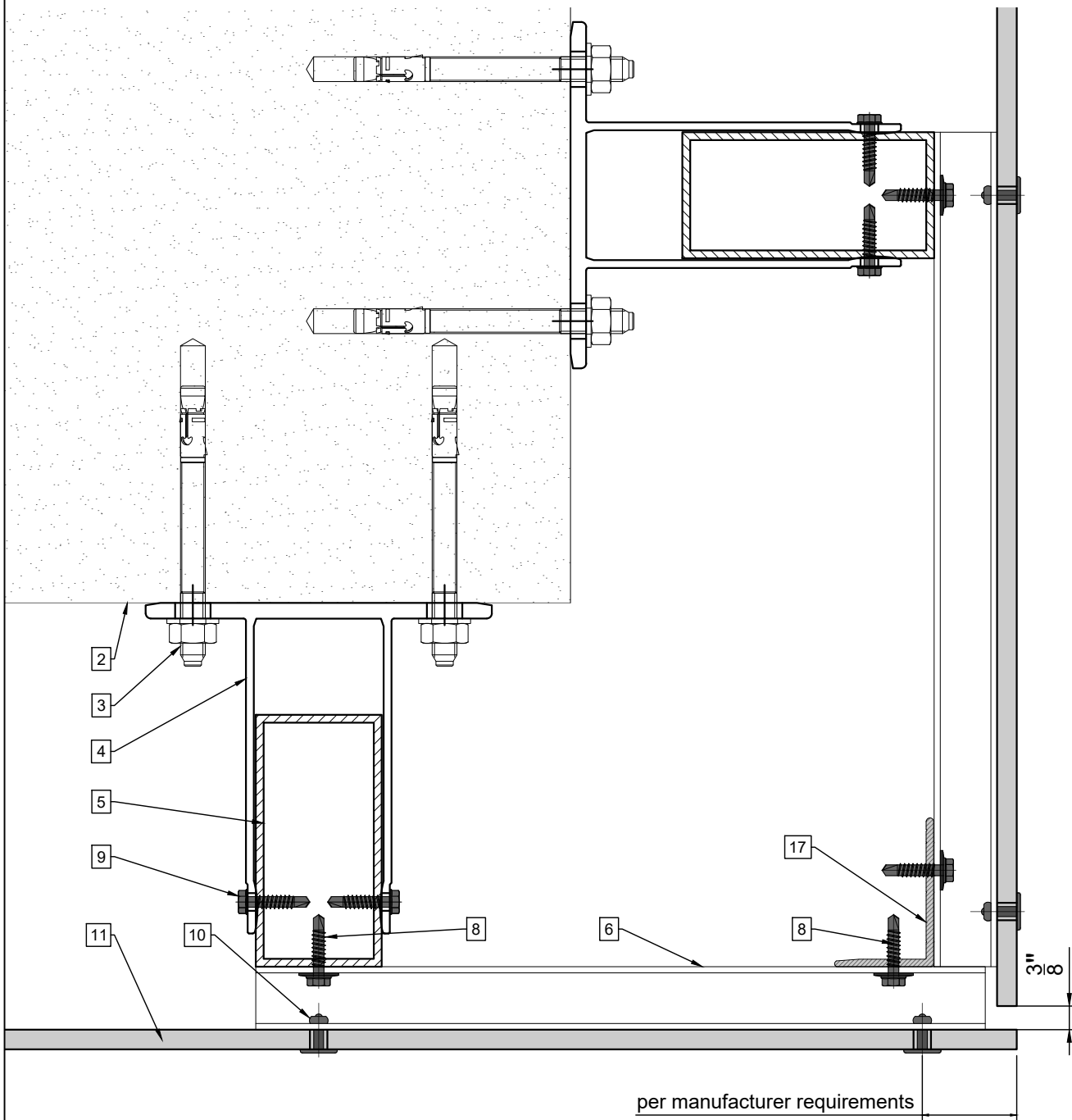
Legend

1. Steel stud (16 GA typical)
2. Concrete slab (8" min)
3. Perimeter anchor
4. Alpha E wall bracket
5. Aluminum tube
6. Z-profile
7. st/st self-drilling screw $\frac{3}{16} \times \frac{3}{4}$ "
8. st/st self-drilling screw #14x1"

9. st/st self-drilling screw #14x3/4"
10. Blind rivet
11. Panel
12. Exterior wall
13. Coping
14. Perforated window head closure
15. Window sill
16. Perforated base closure
17. Aluminum L-profile

* Ventilation will vary based on insulation depth.

** Minimum ventilation requirement should be qualified by panel manufacturer.



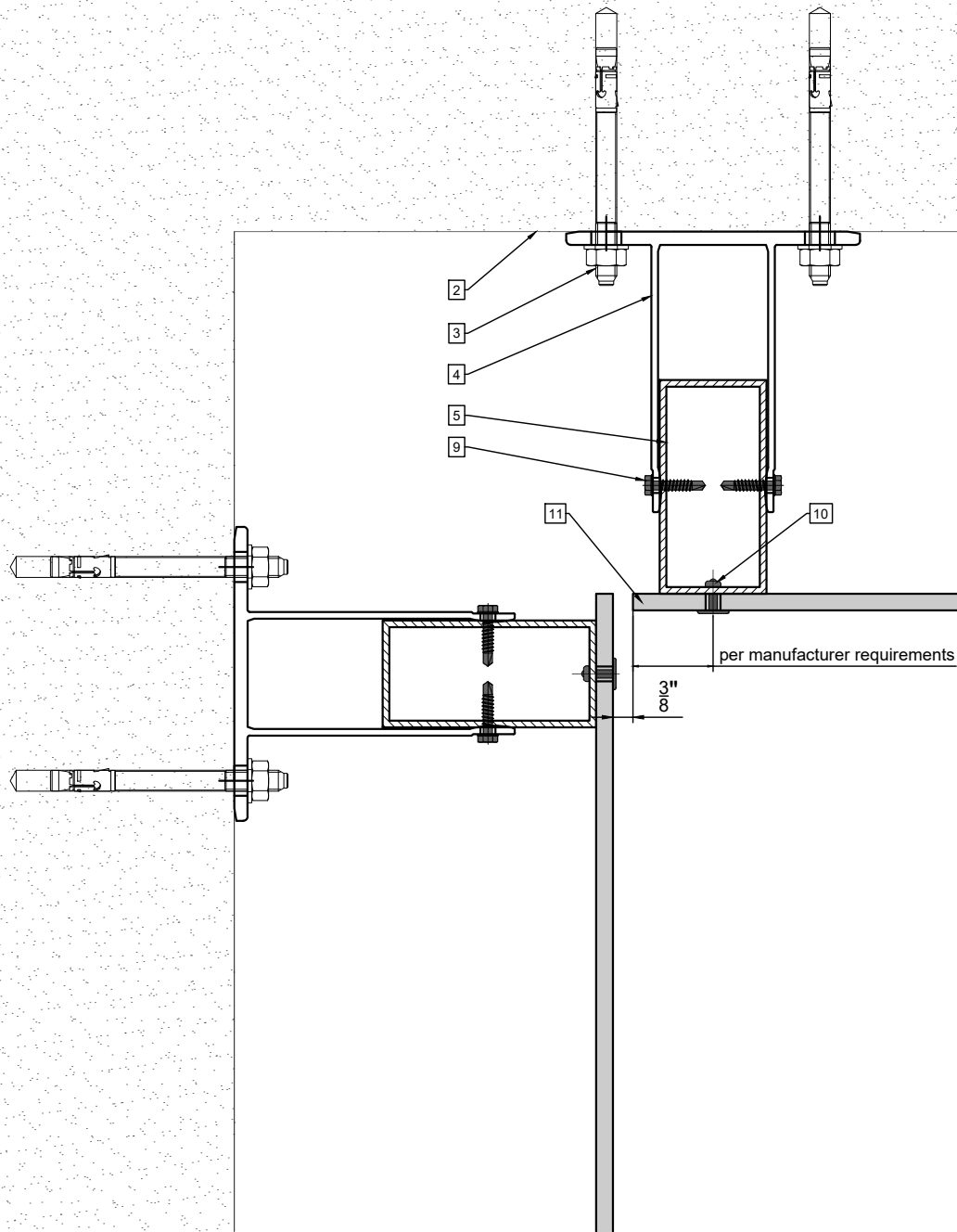
Legend

1. Steel stud (16 GA typical)
2. Concrete slab (8" min)
3. Perimeter anchor
4. Alpha E wall bracket
5. Aluminum tube
6. Z-profile
7. st/st self-drilling screw $\frac{3}{16} \times \frac{3}{4}$ "
8. st/st self-drilling screw #14x1"

9. st/st self-drilling screw #14x3/4"
10. Blind rivet
11. Panel
12. Exterior wall
13. Coping
14. Perforated window head closure
15. Window sill
16. Perforated base closure
17. Aluminum L-profile

* Ventilation will vary based on insulation depth.

** Minimum ventilation requirement should be qualified by panel manufacturer.

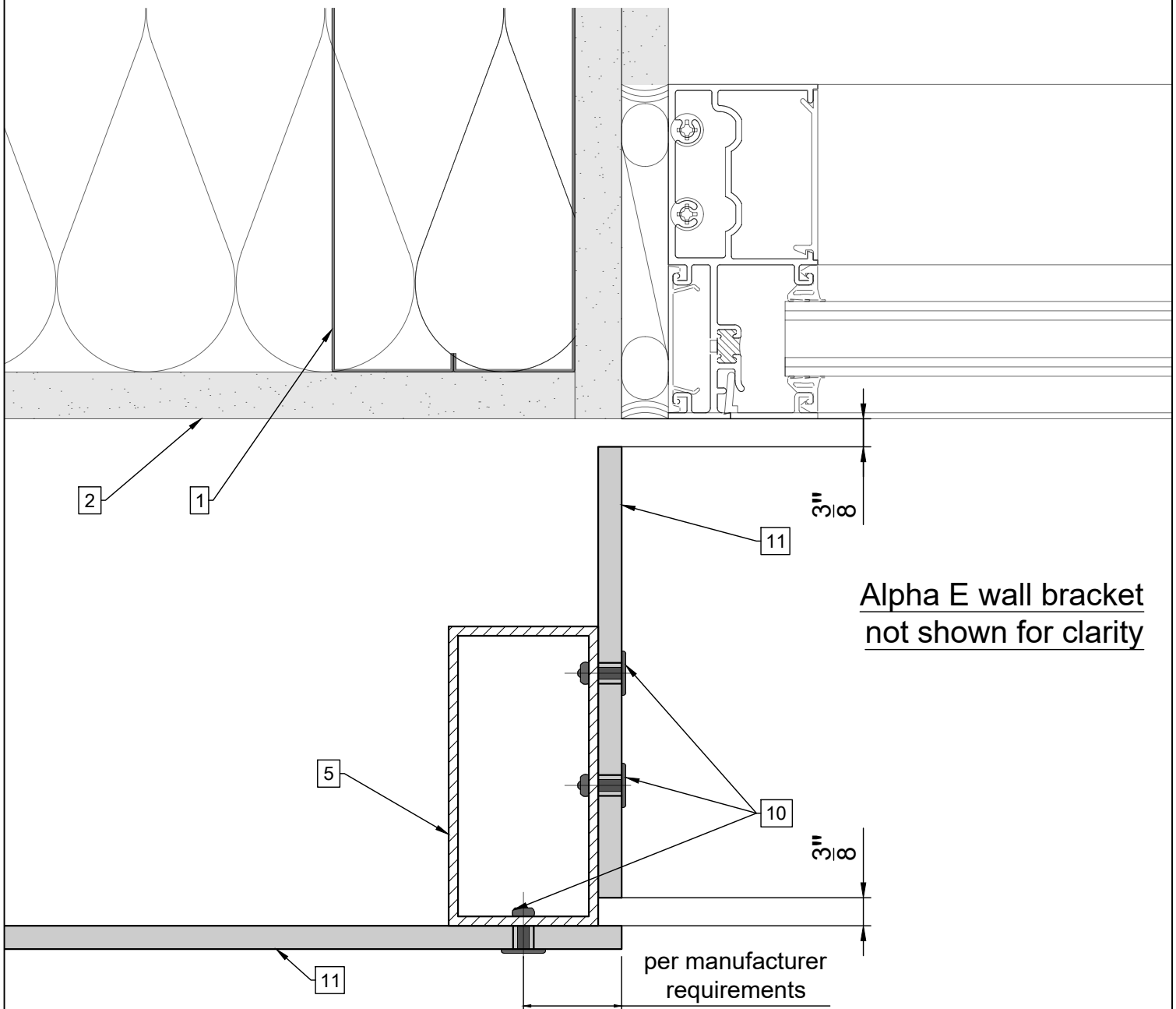


Legend

- | | |
|--|---------------------------------------|
| 1. Steel stud (16 GA typical) | 9. st/st self-drilling screw #14x3/4" |
| 2. Concrete slab (8" min) | 10. Blind rivet |
| 3. Perimeter anchor | 11. Panel |
| 4. Alpha E wall bracket | 12. Exterior wall |
| 5. Aluminum tube | 13. Coping |
| 6. Z-profile | 14. Perforated window head closure |
| 7. st/st self-drilling screw $\frac{3}{16} \times \frac{3}{4}$ " | 15. Window sill |
| 8. st/st self-drilling screw #14x1" | 16. Perforated base closure |
| | 17. Aluminum L-profile |

* Ventilation will vary based on insulation depth.

** Minimum ventilation requirement should be qualified by panel manufacturer.



Legend

- | | | |
|--|---------------------------------------|---|
| 1. Steel stud (16 GA typical) | 9. st/st self-drilling screw #14x3/4" | * Ventilation will vary based on insulation depth. |
| 2. Concrete slab (8" min) | 10. Blind rivet | ** Minimum ventilation requirement should be qualified by panel manufacturer. |
| 3. Perimeter anchor | 11. Panel | |
| 4. Alpha E wall bracket | 12. Exterior wall | |
| 5. Aluminum tube | 13. Coping | |
| 6. Z-profile | 14. Perforated window head closure | |
| 7. st/st self-drilling screw $\frac{3}{16}" \times \frac{3}{4}"$ | 15. Window sill | |
| 8. st/st self-drilling screw #14x1" | 16. Perforated base closure | |
| | 17. Aluminum L-profile | |